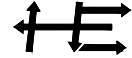
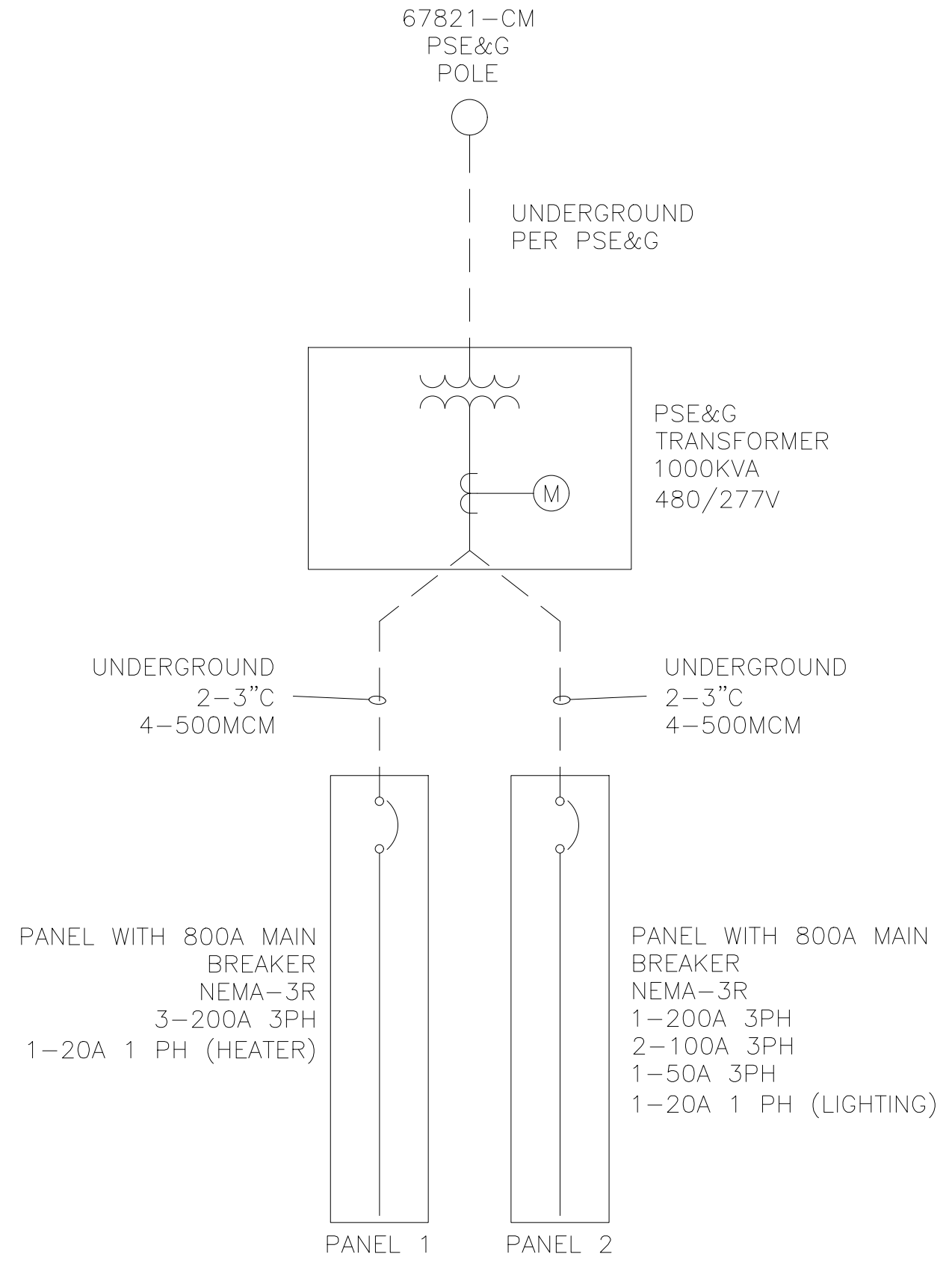


CONTACT DRAWINGS

- 1.0.1 BALZANO PSE&G ELECTRICAL SERVICE – ELECTRICAL SINGLE LINE– ES01 REV B
- 1.0.2 BALZANO CHARGER LAYOUT – REV A
- 1.0.3 BROADWAY PSE&G ELECTRICAL SERVICE – ELECTRICAL SINGLE LINE – ES01 REV C
- 1.0.4 BROADWAY TERMINAL – WATER TOWER AREA – ELECTRICAL CHARGER STATION 1 OF 1, REV B (PLOT PLAN)
- 1.0.5 BROADWAY TERMINAL – MAIN SUBSTATION – ELECTRICAL CHARGER STATION 1 OF 1, REV B (PLOT PLAN)
- 1.0.6 BROADWAY TERMINAL – MAIN SUBSTATION – ELECTRICAL SINGLE LINE ES03 – REV B
- 1.0.7 SJPC BROADWAY TERMINAL – OVERALL ONE LINE DIAGRAM 1/20/2021 FOR REFERENCE ONLY
- 1.0.8 MAIN SUBSTATION PLAN – E-2 FOR REFERENCE ONLY
- 1.0.9 TRANSFORMER PAD TYPICAL DETAILS

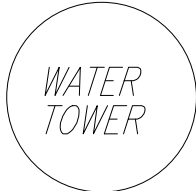
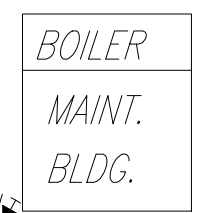
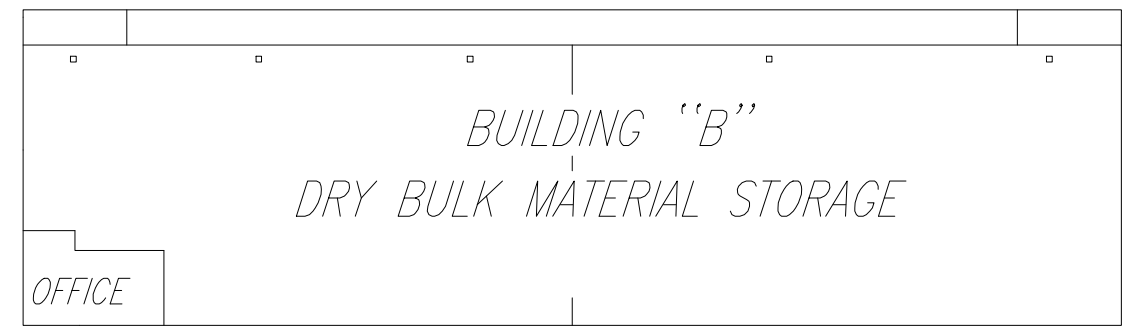
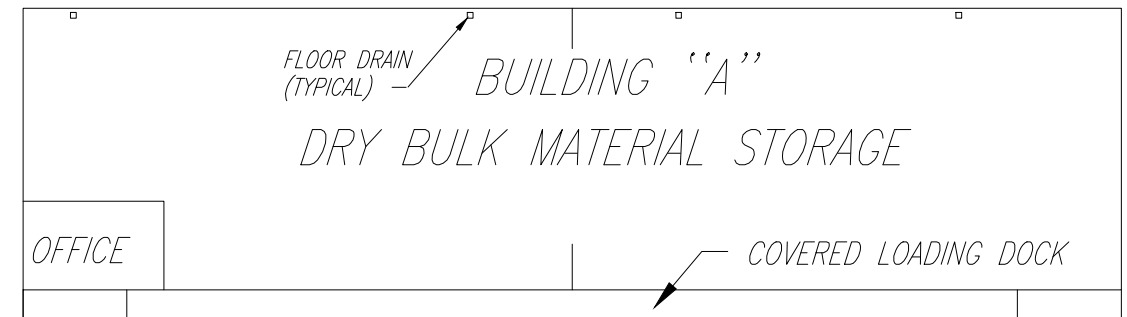
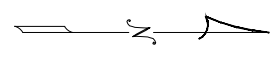
A	03.14.22	TJS	SG	REVISED PER FIELD REVIEW
No.	Date	By	Chk	Description
S.T. HUDSON ENGINEERS, INC. PROFESSIONAL ENGINEERS & CONSULTANTS  900 Dudley Ave. Cherry Hill, N.J. 08002 856-342-6600 Fax No. 856-342-8323				
SOUTH JERSEY PORT CORPORATION BROADWAY TERMINAL CAMDEN, NJ.				
drawn	date	12.28.21	contract	
checked	FILE COVER SHEET			
drftg. approval	.			
MAIN SUB			dwg. no.	rev.
COVER SHEET			CS01	A

BALZANO

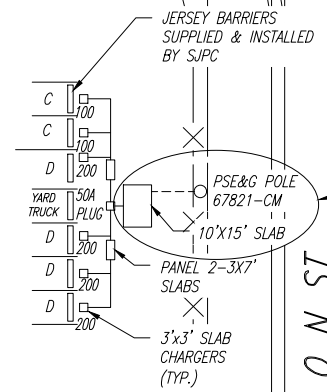


No.	Date	By	Chk	Description
S.T. HUDSON ENGINEERS, INC. PROFESSIONAL ENGINEERS & CONSULTANTS 900 Dudley Ave. Cherry Hill, N.J. 08002 856-342-6600 Fax No. 856-342-8323				
SOUTH JERSEY PORT CORPORATION BALZANO TERMINAL CAMDEN, NJ.				
drawn		date	12.28.21	contract
checked		FILE SJPC-E1001		
PSE&G SERVICE				dwg. no.
ELECTRICAL SINGLE LINE				rev.
				ES01 B

ISSUED PRINTS



C - 12'W x 16'L
D - 14'W x 24'L



WORK BY PSE&G

CLINTON ST.

'GE

FH

FH



BALZANO CHARGER STATION
SCALE: 1"=300'-0"

NO.	DATE	DESCRIPTION	APPROVALS		
			BY	FOR	DATE

Drawings issued in electronic form are provided for the convenience of the recipient and are used at the sole risk of the user. Reliance may be placed only on hard copies of drawings issued by S.T. Hudson Engineers, Inc. in the event of any discrepancy, the hard copy will govern.

S.T. HUDSON ENGINEERS, INC.
PROFESSIONAL ENGINEERS & CONSULTANTS
900 Dudley Avenue
Cherry Hill, N.J. 08002
Phone 856-342-6600
Fax No. 856-342-8323

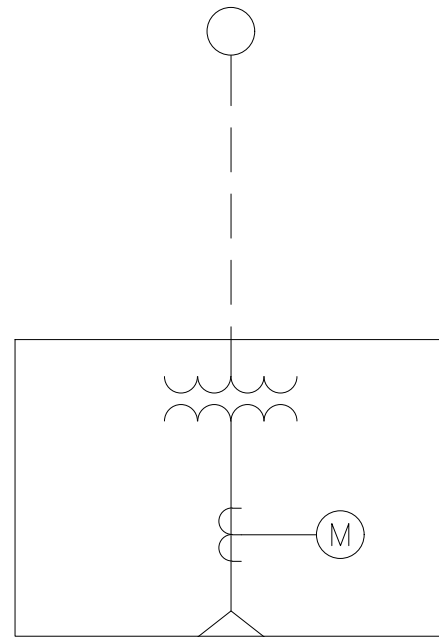
SOUTH JERSEY PORT CORPORATION
BALZANO TERMINAL
CAMDEN, NEW JERSEY

drawn STAFF date 02.10.22
checked FILE
drftg. approval

BALZANO CHARGER LAYOUT 1 of 1 A

22207-CM
PSE&G
POLE

BROADWAY



PSE&G
TRANSFORMER
1000KVA
480/277V

2-3" C 500MCM

2-3" C 500MCM

800A PANEL WITH MAIN
BREAKER
NEMA-3R
2-200A 3PH
2-100A 3PH
1-20A 1PH (HEATER)

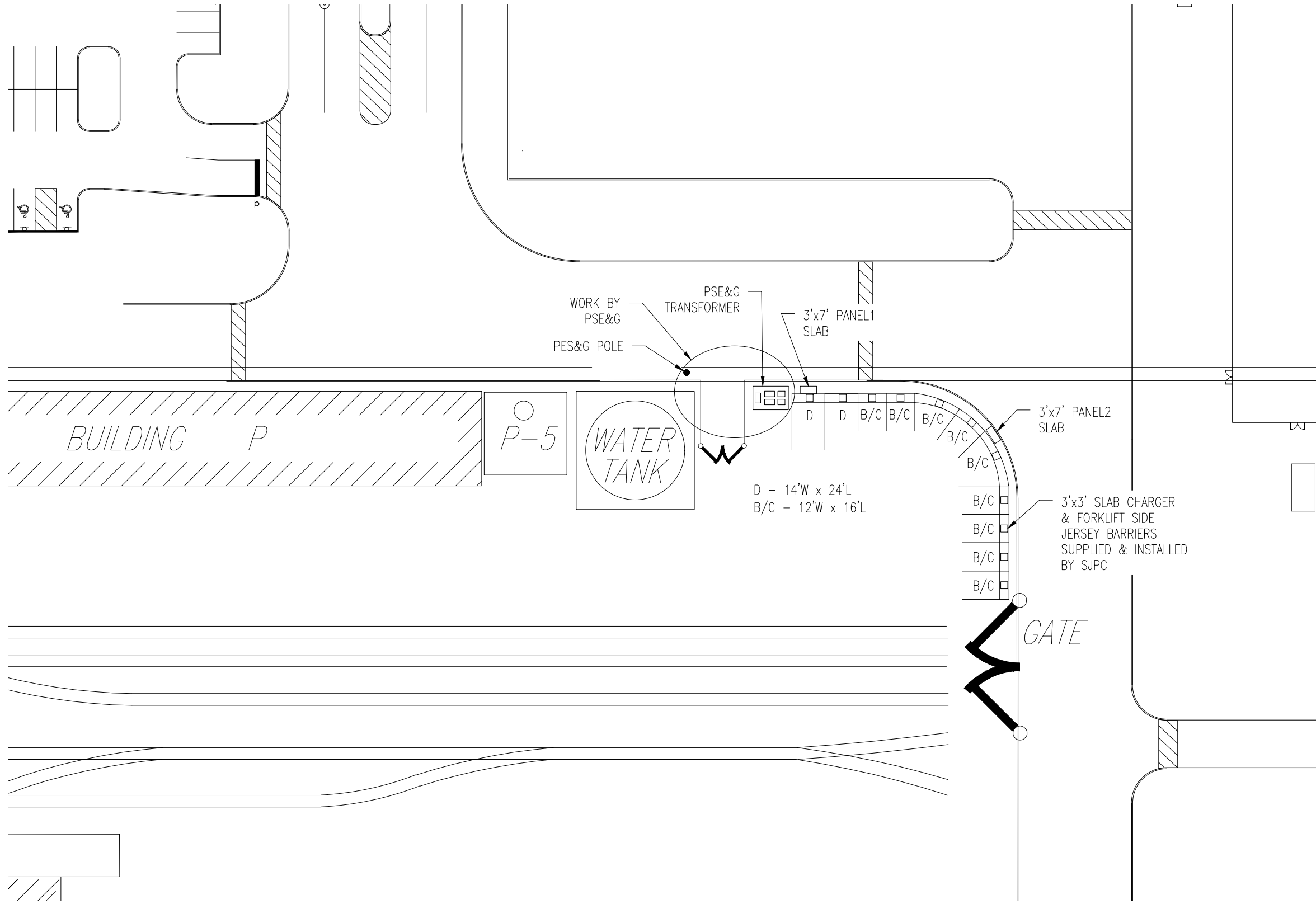
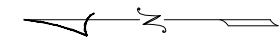
800A PANEL WITH MAIN
BREAKER
NEMA-3R
7-100A 3PH
1-20A 1PH (LIGHTING)

PANEL 1

PANEL 2

No.	Date	By	Chk	Description
S.T. HUDSON ENGINEERS, INC. PROFESSIONAL ENGINEERS & CONSULTANTS 900 Dudley Ave. Cherry Hill, N.J. 08002 856-342-6600 Fax No. 856-342-8323				
SOUTH JERSEY PORT CORPORATION BROADWAY TERMINAL CAMDEN, NJ.				
drawn		date	12.28.21	contract
checked		FILE SJPC-E1001		
PSE&G SERVICE				dwg. no.
ELECTRICAL SINGLE LINE				ES01
				rev. C

ISSUED
PRINTS



WATER TOWER CHARGER STATION
SCALE: 1"=200'-0"

Drawings issued in electronic form are provided for the convenience of the recipient and are used at the sole risk of the user. Reliance may be placed only on hard copies of drawings issued by S.T. Hudson Engineers, Inc. in the event of any discrepancy, the hard copy will govern.

S.T. HUDSON ENGINEERS, INC.
PROFESSIONAL ENGINEERS & CONSULTANTS
900 Dudley Avenue
Cherry Hill, N.J. 08002
Phone 856-342-6600
Fax No. 856-342-8323

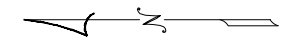
SOUTH JERSEY PORT CORPORATION
BROADWAY TERMINAL
CAMDEN, NEW JERSEY

drawn STAFF date 01.03.22
checked approval FILE SJPE1A

WATER TOWER
ELECTRICAL CHARGER STATION
dwg. no. 1 of 1
rev. B

C:\temp\1312 Elec Layouts\1312-05-1312-05-1312.dwg

ISSUED
PRINTS



- DIESEL AST

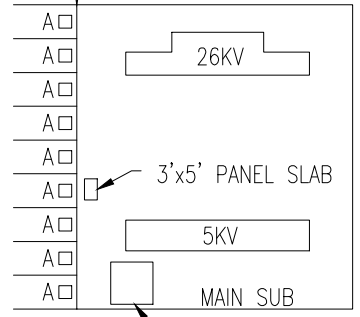
GASOLINE AST

BUILDING

E-1

A - 8'W x 15'L

JERSEY BARRIERS
SUPPLIED & INSTALLED
BY SJPC



10'x10' FDN
TRANSFORMER

BUILDING

E

S.J.P.C. CARGO STORAGE

MAIN SUBSTATION CHARGER STATION

SCALE: 1"=200'-0"

Drawings issued in electronic form are provided for the convenience of the recipient and are used at the sole risk of the user. Reliance may be placed only on hard copies of drawings issued by S.T. Hudson Engineers, Inc. in the event of any discrepancy, the hard copy will govern.

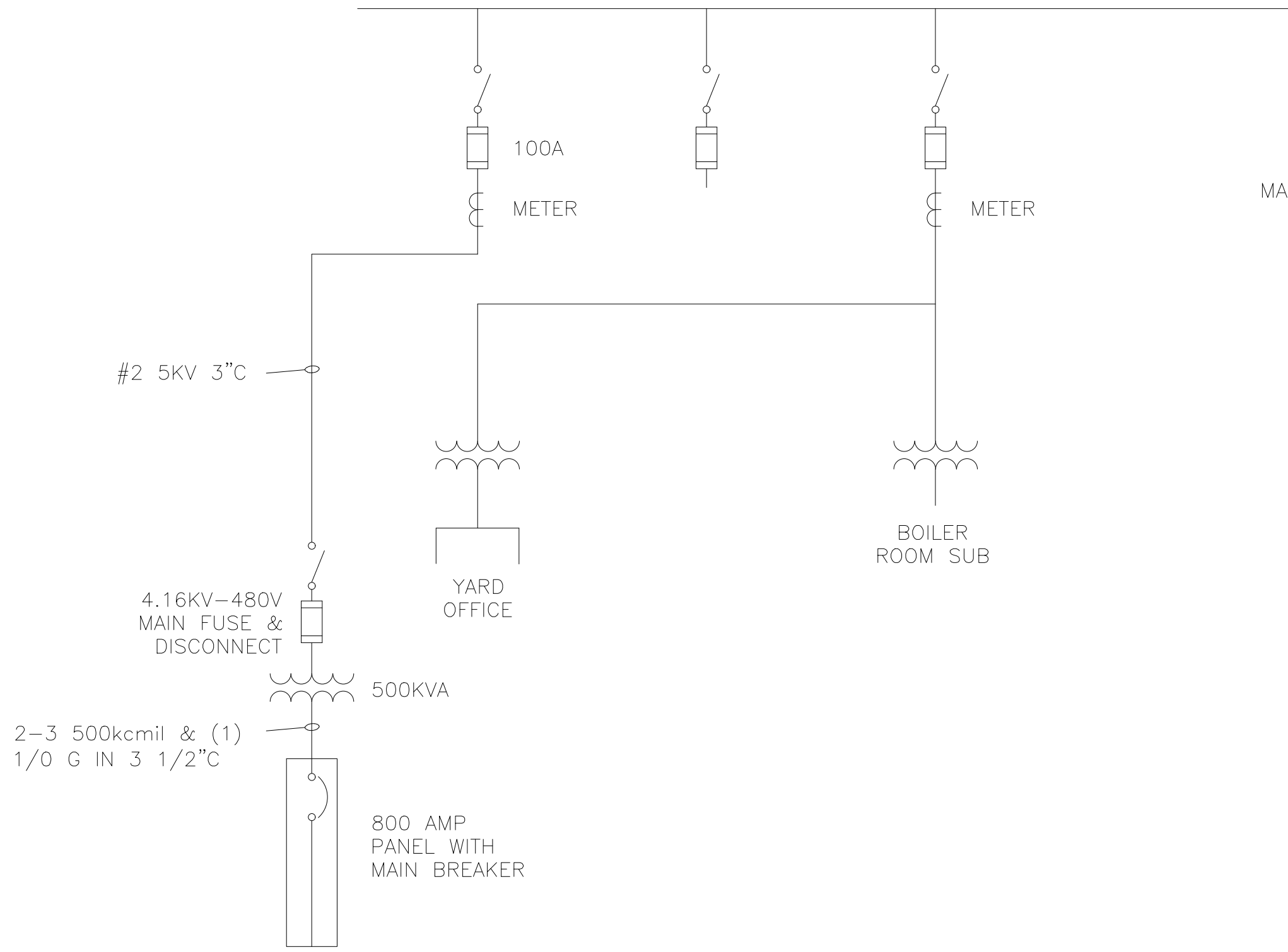
S.T. HUDSON ENGINEERS, INC.
PROFESSIONAL ENGINEERS & CONSULTANTS
900 Dudley Avenue
Cherry Hill, N.J. 08002
Phone 856-342-6600
Fax No. 856-342-8323

SOUTH JERSEY PORT CORPORATION
BROADWAY TERMINAL
CAMDEN, NEW JERSEY

drawn	STAFF	date	01.03.22	contract
checked		FILE	SJPE3A	
drftg.	approval			

MAIN SUBSTATION		dwg. no.	rev.
ELECTRICAL CHARGER STATION		1 of 1	B

C:\temp\1512_ Elec Layouts\1512-055-SJPE3A.dwg



MAIN SUB AREA

#2 5KV 3" C

4.16KV-480V
MAIN FUSE &
DISCONNECT

2-3 500kcmil & (1)
1/0 G IN 3 1/2" C

500KVA

800 AMP
PANEL WITH
MAIN BREAKER

100A

METER

YARD
OFFICE

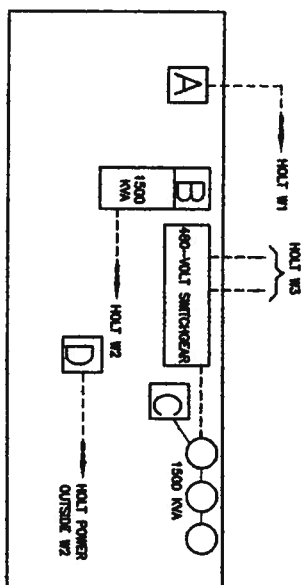
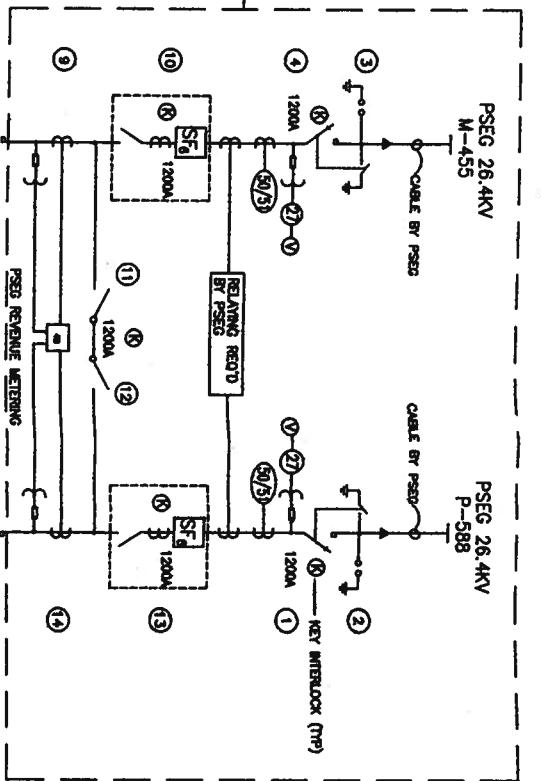
METER

BOILER
ROOM SUB

TYPE A 9-70A - #6 1" C
1-20A 1PH #12 LIGHTING

B	03.14.22	.AM	.AM	REVISED PER FIELD REVIEW
No.	Date	By	Chk	Description
S.T. HUDSON ENGINEERS, INC. PROFESSIONAL ENGINEERS & CONSULTANTS 900 Dudley Ave. Cherry Hill, N.J. 08002 856-342-6600 Fax No. 856-342-8323				
SOUTH JERSEY PORT CORPORATION BROADWAY TERMINAL CAMDEN, NJ.				
drawn	date	12.28.21	contract	
checked	FILE	SJPC-E1003	H-	
MAIN SUB			dwg. no.	rev.
ELECTRICAL SINGLE LINE			ES03	B

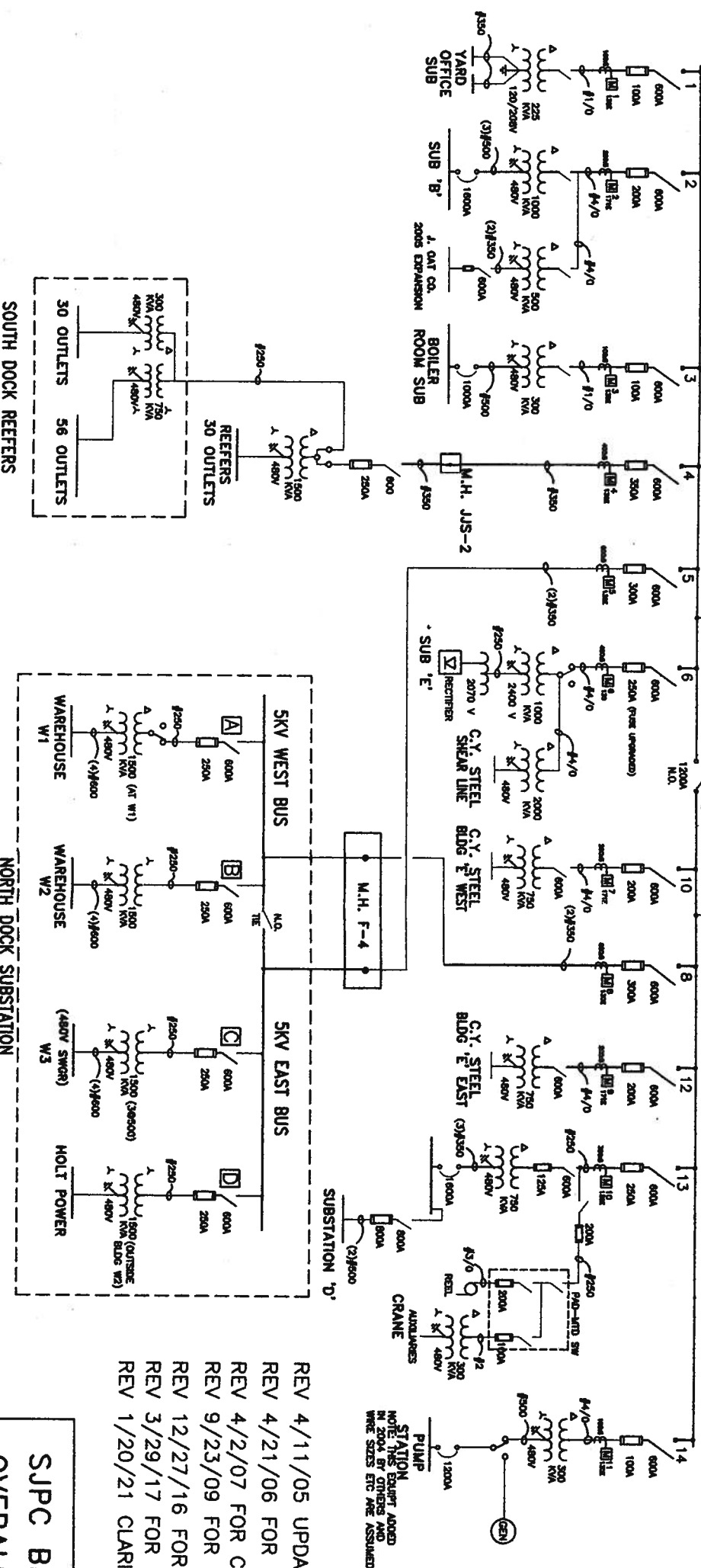
EQUIPMENT UNDER CONTROL OF PSE&D
 (14) (TYPICAL BAY NUMBER AS SHOWN
 ON SAC DRAWINGS)



FOR REFERENCE ONLY

SKV SWGR NORTH BUS - 1200A

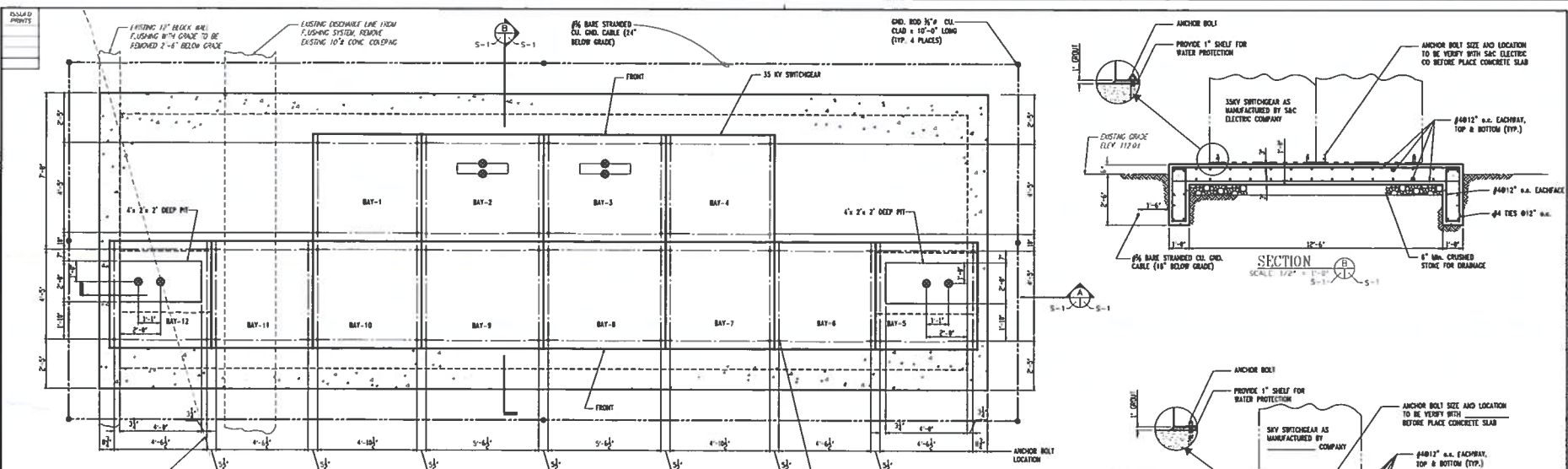
SKV SWGR SOUTH BUS - 1200A



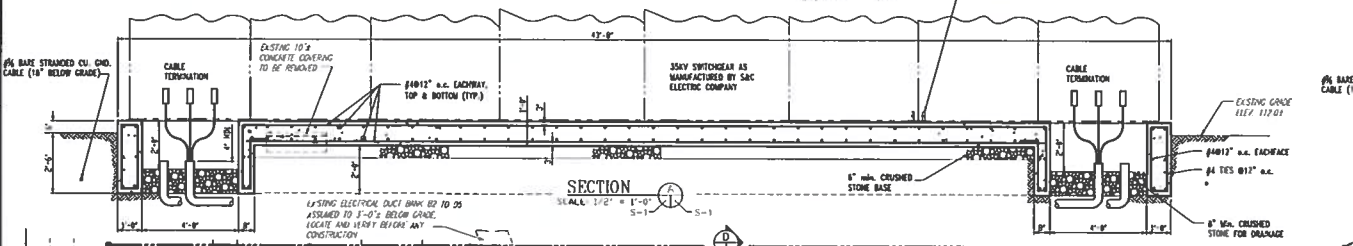
NOTE THIS EQUIP. ADDED
 IN 2004 BY OTHERS AND
 WIRE SIZES ETC. ARE ASSUMED

- REV 4/11/05 UPDATED FOR NEW PUMP STATION
- REV 4/21/06 FOR JOSEPH OAT CO. EXPANSION
- REV 4/2/07 FOR CAMDEN YARDS NEW SHEAR LINE
- REV 9/23/09 FOR SUB. 'D' XFMR REPLACEMENT
- REV 12/27/16 FOR HOLT MODIFICATIONS
- REV 3/29/17 FOR HOLT MODIFICATIONS
- REV 1/20/21 CLARIFICATIONS IN NORTH DOCK SUB

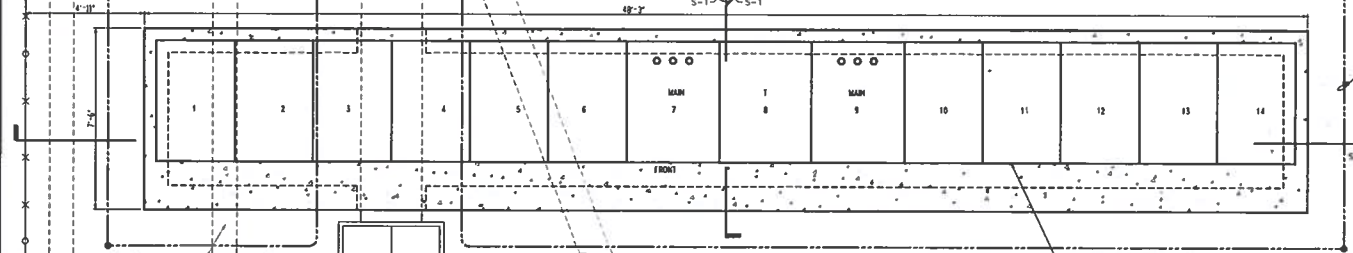
SJPC BROADWAY TERMINAL
 OVERALL ONE-LINE DIAGRAM



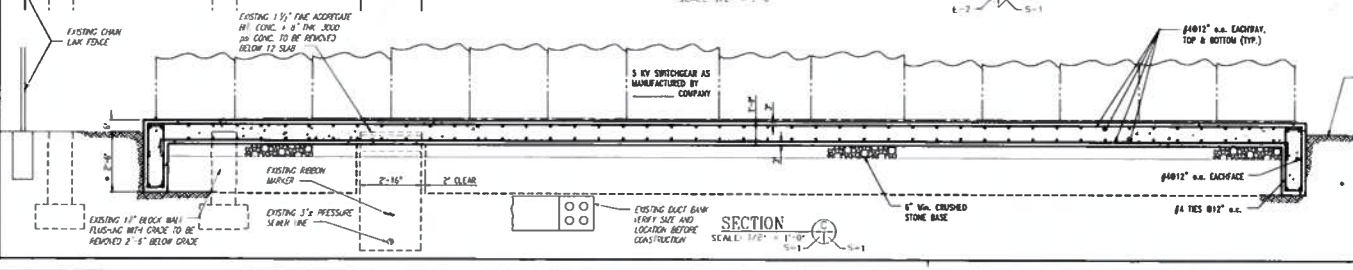
35KV SWITCHGEAR ANCHOR BOLT AND FOUNDATION DETAIL. SCALE: 1/8" = 1'-0"



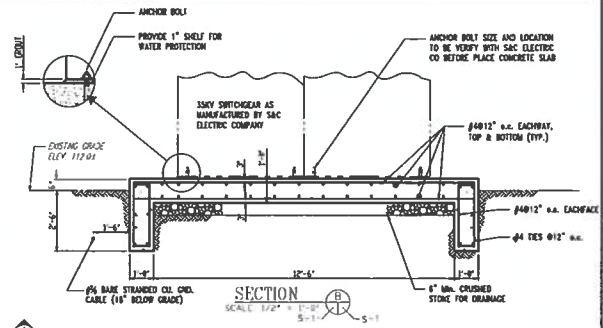
SECTION SCALE: 1/2" = 1'-0"



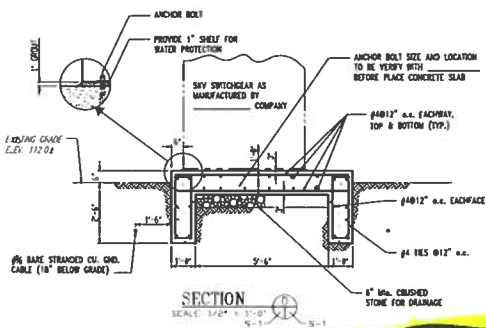
5 KV SWITCHGEAR ANCHOR BOLT AND FOUNDATION DETAIL. SCALE: 1/8" = 1'-0"



SECTION SCALE: 1/2" = 1'-0"



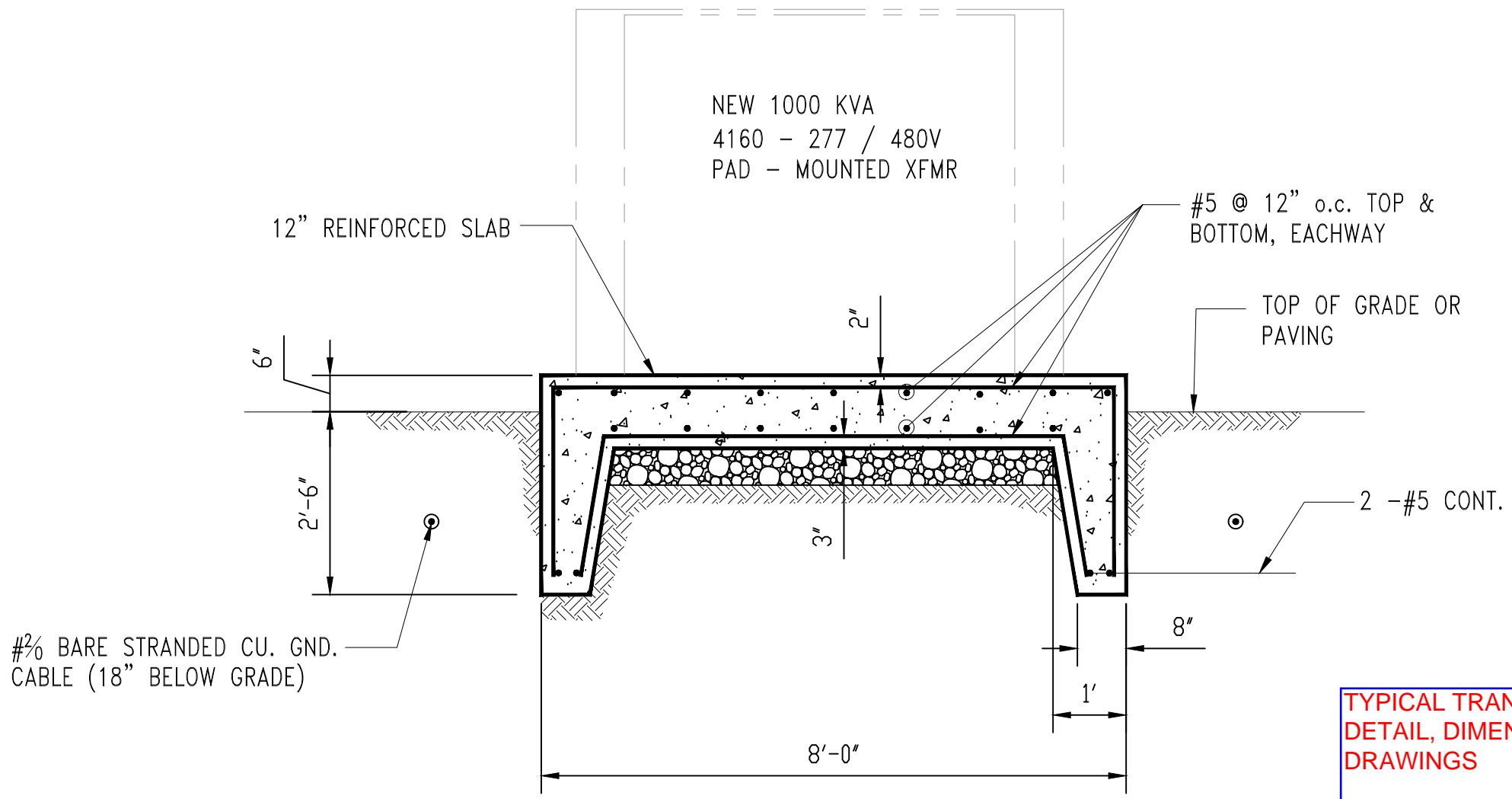
SECTION SCALE: 1/2" = 1'-0"



SECTION SCALE: 1/2" = 1'-0"

FOR REFERENCE ONLY

APPROVALS		S.T. HUDSON ENGINEERS, INC. PROFESSIONAL ENGINEERS & CONSULTANTS 100 HUDSON SQUARE HUDSON, NEW JERSEY 07030 TEL: 908-960-3447 FAX: 908-960-3450	
DATE	SCALE	DATE	SCALE
DESIGNED BY	CHECKED BY	DATE	SCALE
SOUTH JERSEY PORT CORPORATION BROADWAY TERMINAL CAMDEN, NEW JERSEY		ELECTRICAL MODIFICATION	
SUBSTATION FOUNDATION PLANS		S-10	



TYPICAL TRANSFORMER PAD
DETAIL, DIMENSIONS PER PLAN
DRAWINGS

TRANSFORMER PAD DETAIL

SCALE: 1/2" = 1'-0"

