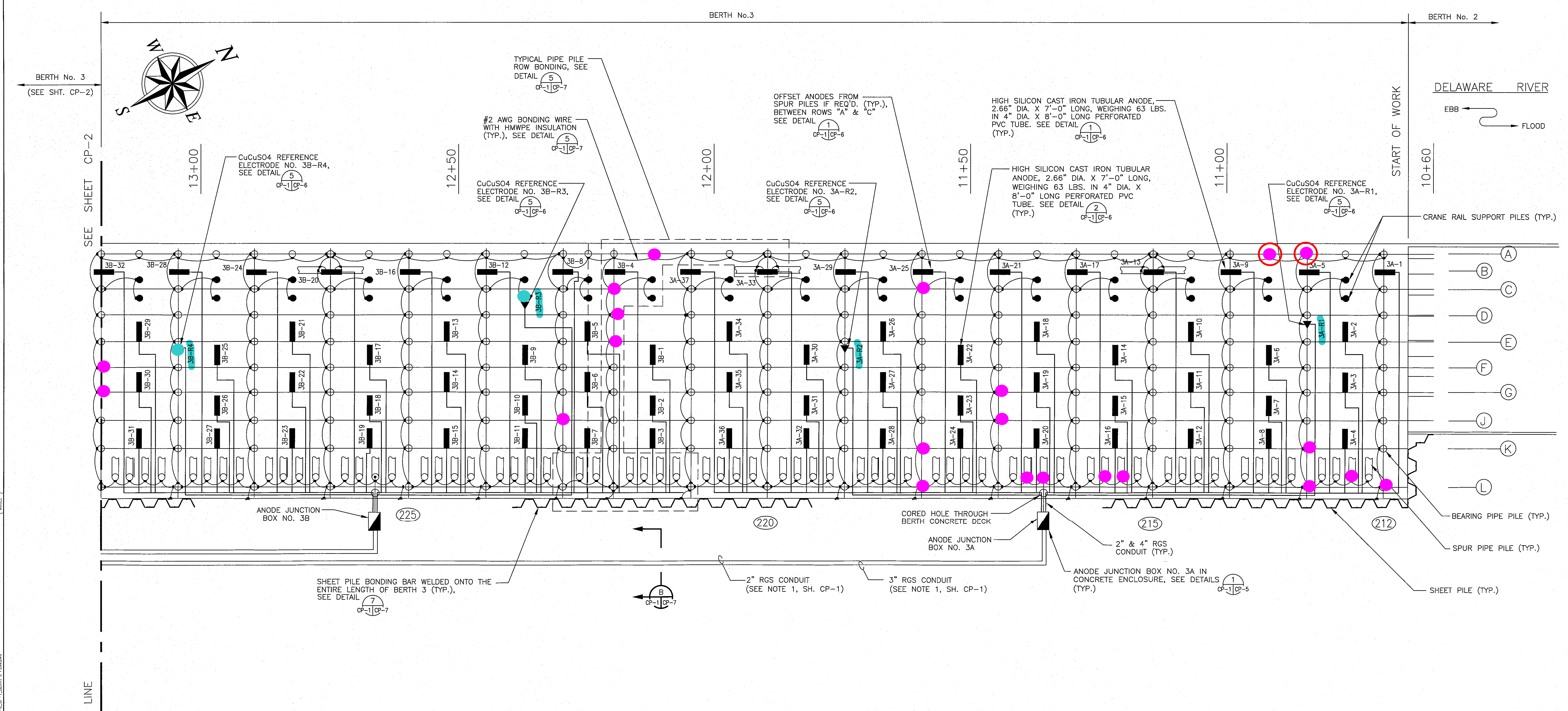
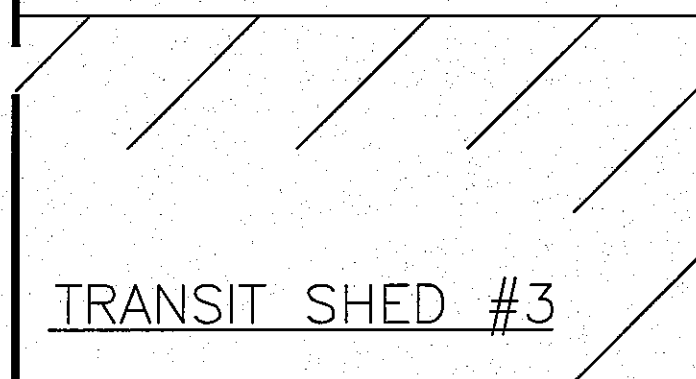


ISSUED PRINTS



MATCH LINE

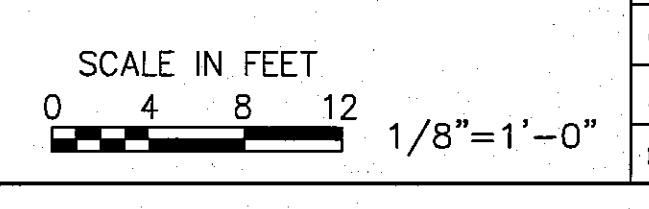


LEGEND

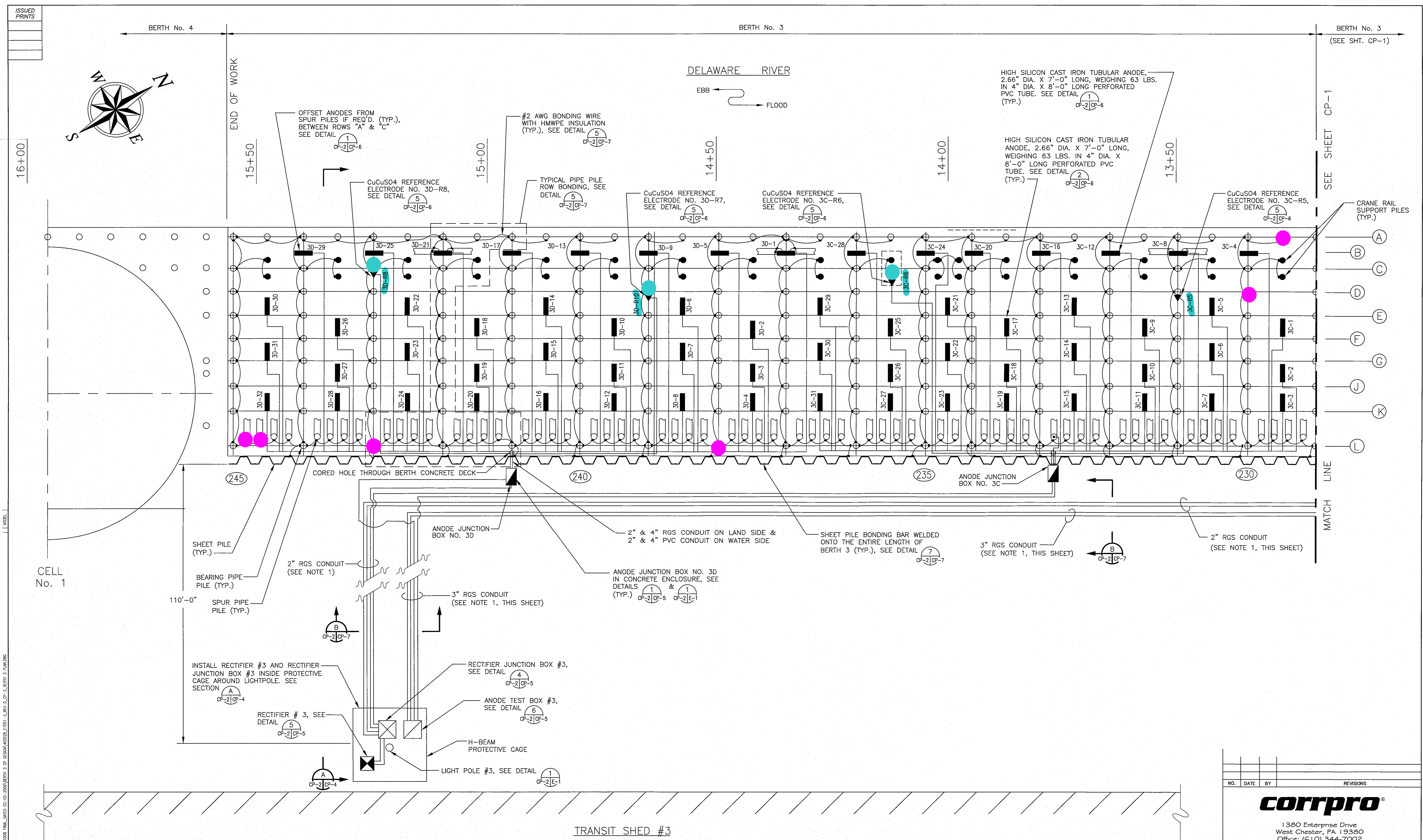
- BROKEN CAD WELDS
- WIRE PENETRATION THROUGH BULKHEAD
- REFERENCE ELECTRODE

NOTES: (FOR PLAN VIEW)

1. CATHODIC PROTECTION (CP) CABLE AND CONDUIT RUNS SHOWN SCHEMATICALLY. CONTRACTOR TO SUBMIT SHOP DRAWINGS FOR ACTUAL CP CABLE AND CONDUIT RUNS FOR APPROVAL BY THE OWNER.
2. BOND ALL BEARING PILES, SPUR PILES, CRANE RAIL SUPPORT PILES AND SHEET PILES, TO MAKE THEM ELECTRICALLY CONTINUOUS WITH EACH OTHER.
3. CRANE RAILS AND RAILROAD TRACKS NOT SHOWN FOR CLARITY. REFER TO SHEET CP-4.



NO.	DATE	BY	REVISIONS
<p>1380 Enterprise Drive West Chester, PA 19380 Office: (610) 344-7002 www.corrpro.com</p>			
<p>THIS DESIGN DRAWING IS NOT APPLICABLE FOR USE AS STANDARD CORROSION CONTROL PROCEDURES FOR OTHER PROJECTS DUE TO VARIABLE CONDITIONS AT OTHER SITES. NEITHER THIS DESIGN NOR ANY PART THEREOF MAY BE DUPLICATED IN ANY WAY FOR OTHER PROJECTS, EXCEPT BY WRITTEN AGREEMENT WITH CORRPRO COMPANIES, INC.</p>			
<p>SOUTH JERSEY PORT CORPORATION</p>			
<p>BECKETT STREET TERMINAL CAMDEN, NEW JERSEY</p>			
<p>CATHODIC PROTECTION SYSTEM BERTH 3</p>			
<p>PLAN VIEW OF CP SYSTEM - SHT. 1</p>			
DESIGNED BY:	A. MUJEED	CORRPRO JOB NO.:	402028
DRAWN BY:	K. KELLY	SCALE:	1/8"=1'-0"
CHECKED BY:	T. KENNEDY	SHEET	2 OF 10
APPROVED BY:	W. YOUNG	DWG. NO.:	CP-1
DATE:	02/03/09	REV.:	0



- NOTES: (FOR SITE PLAN)**
- CATHODIC PROTECTION (CP) CABLE AND CONDUIT RUNS SHOWN SCHEMATICALLY. CONTRACTOR TO SUBMIT SHOP DRAWINGS FOR ACTUAL CP CABLE AND CONDUIT RUNS FOR APPROVAL BY THE OWNER.
 - BOND ALL BEARING PILES, SPUR PILES, CRANE RAIL SUPPORT PILES AND SHEET PILES, TO MAKE THEM ELECTRICALLY CONTINUOUS WITH EACH OTHER.
 - CRANE RAILS AND RAILROAD TRACKS NOT SHOWN FOR CLARITY. REFER TO SHEET CP-4.
 - LOCATE RECTIFIER, RECTIFIER JUNCTION BOX AND ANODE TEST BOX PER OWNER'S DIRECTION.

LEGEND

- BROKEN CAD WELDS
- WIRE PENETRATION THROUGH BULKHEAD
- REFERENCE ELECTRODE

NO.	DATE	BY	REVISIONS

corrpro
 1380 Enterprise Drive
 West Chester, PA 19380
 Office: (610) 344-7002
 www.corrpro.com

THIS DESIGN DRAWING IS NOT APPLICABLE FOR USE AS STANDARD CORROSION CONTROL PROCEDURES FOR OTHER PROJECTS DUE TO VARIABLE CONDITIONS AT OTHER SITES. NEITHER THIS DESIGN NOR ANY PART THEREOF MAY BE DUPLICATED IN ANY WAY FOR OTHER PROJECTS, EXCEPT BY WRITTEN AGREEMENT WITH CORRPRO COMPANIES, INC.

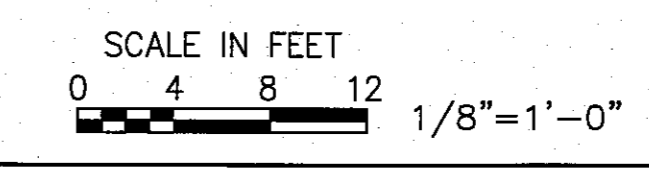
SOUTH JERSEY PORT CORPORATION

BECKETT STREET TERMINAL
 CAMDEN, NEW JERSEY

CATHODIC PROTECTION SYSTEM
 BERTH 3

PLAN VIEW OF CP SYSTEM - SHT. 2

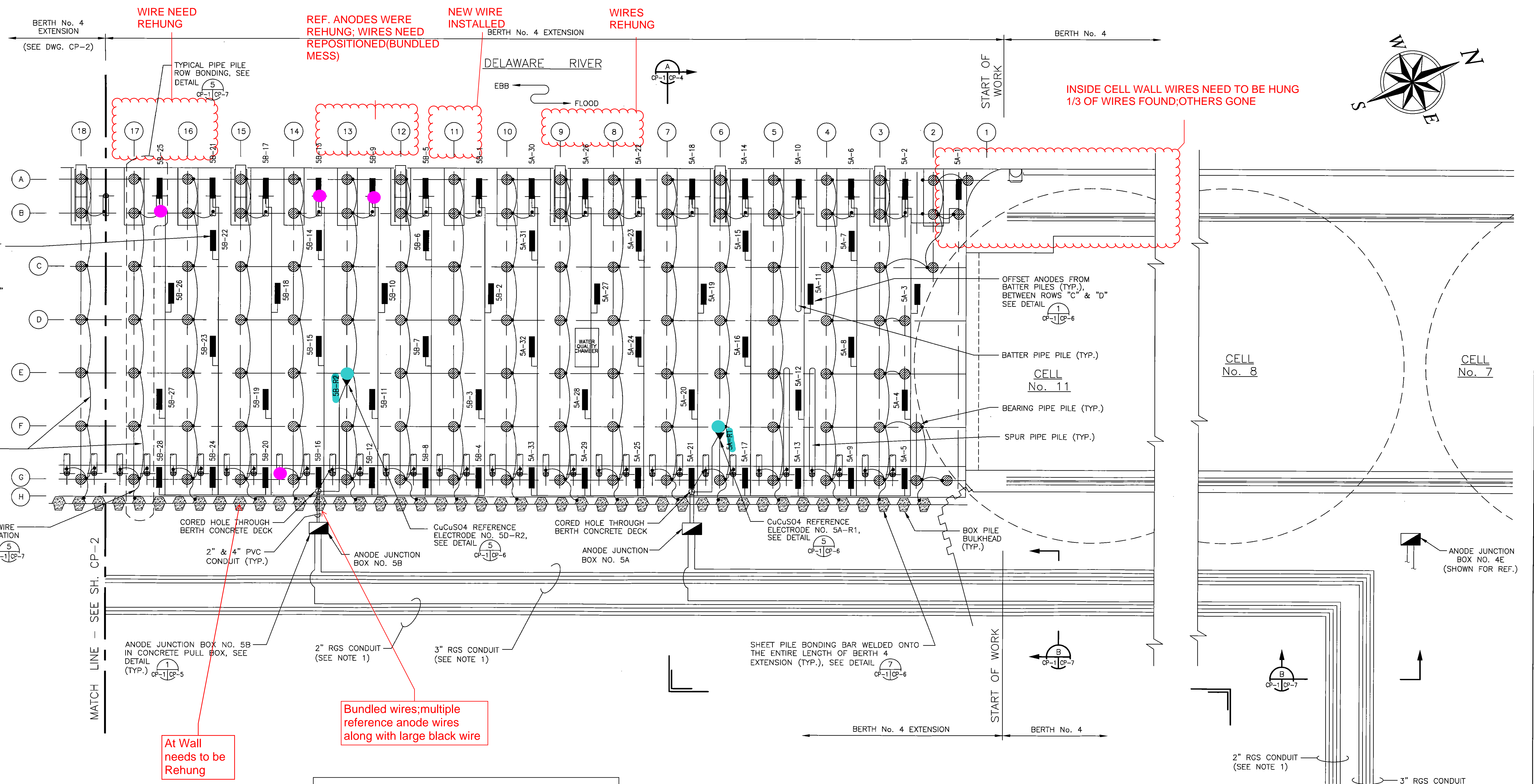
DESIGNED BY: A. MUEZER	CORRPRO JOB NO. 402028
DRAWN BY: K. KELLY	SCALE: 1/8"=1'-0"
CHECKED BY: T. KENNEDY	SHEET 3 OF 10
APPROVED BY: W. YOUNG	DWG. NO. CP-2
DATE: 02/03/09	REV. 0



FILE: (CORRPRO) \\V:\WORK\1380\1380\DRAWINGS\CP\BERTH 3 CP SYSTEM\CP-2\CP-2-1.PLT DATE: 02/03/09 10:45:00 AM

ISSUED PRINTS

FILE: (2025090) C:\WORKSPACE\REVIEWS\DRAWINGS\BERTH4\EXTENSION\CP\REVISIONS\CP-1_BERTH_4_EXTEN_Plan_Sht_1.dwg
 DATE: 02/03/09 10:50:00 AM
 USER: T.KENNEDY
 PLOT: 02/03/09 10:50:00 AM
 PLOTTER: HP DesignJet 500



NOTES:
 AT WALL OF BENT 18, APPEARS CHECK VALVE OPENING IS 35% OPEN

LEGEND

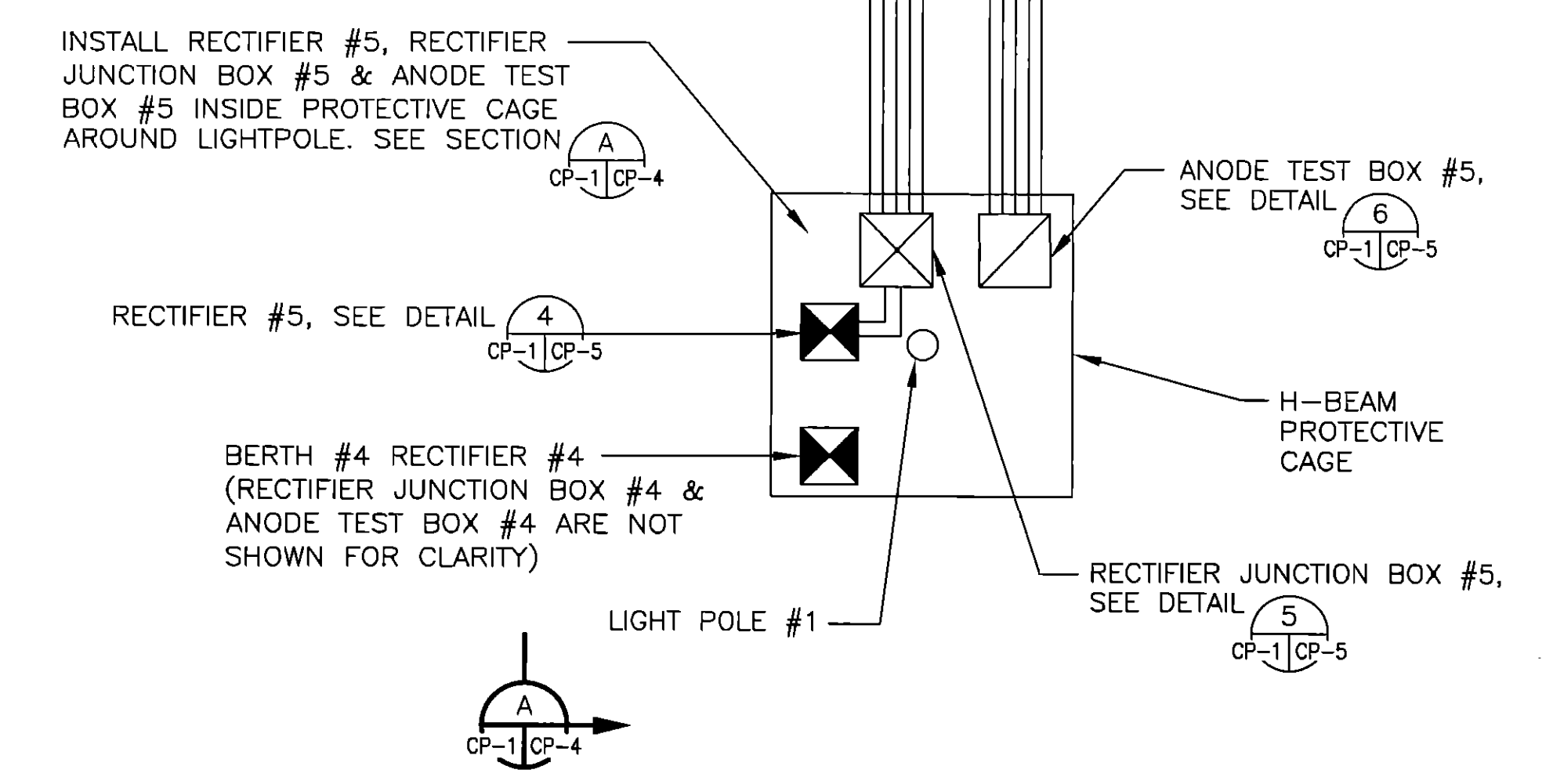
- BROKEN CAD WELDS
- REFERENCE ELECTRODES
- WIRE PENETRATION THROUGH BULKHEAD

At Wall needs to be Rehung

Bundled wires; multiple reference anode wires along with large black wire

NOTES: (FOR SITE PLAN)

1. CATHODIC PROTECTION (CP) CABLE AND CONDUIT RUNS SHOWN SCHEMATICALLY. CONTRACTOR TO SUBMIT SHOP DRAWINGS FOR ACTUAL CP CABLE AND CONDUIT RUNS FOR APPROVAL BY THE OWNER.
2. BOND ALL BEARING PILES, SPUR PILES, CRANE RAIL SUPPORT PILES AND SHEET PILES, TO MAKE THEM ELECTRICALLY CONTINUOUS WITH EACH OTHER.
3. CRANE RAILS AND RAILROAD TRACKS NOT SHOWN FOR CLARITY. REFER TO SHEET CP-4.



SCALE IN FEET
 0 4 8 12 1/8" = 1'-0"

SOUTH JERSEY PORT CORPORATION	
BECKETT STREET TERMINAL CAMDEN, NEW JERSEY	
CATHODIC PROTECTION SYSTEM BERTH 4 EXTENSION	
PLAN VIEW OF CP SYSTEM - SHT. 1	
DESIGNED BY: A. MUEEB	CORRPRO JOB NO. 422028
DRAWN BY: K. KELLY	SCALE: 1/8"=1'-0"
CHECKED BY: T. KENNEDY	SHEET 2 OF 9
APPROVED BY: W. YOUNG	DWG. NO. CP-1
DATE: 02/03/09	REV. 0

1350 Enterprise Drive
 West Chester, PA 19380
 Office: (610) 344-7002
 www.corrpro.com

THIS DESIGN DRAWING IS NOT APPLICABLE FOR USE AS STANDARD CORROSION CONTROL PROCEDURES FOR OTHER PROJECTS DUE TO VARIABLE CONDITIONS AT OTHER SITES. NEITHER THIS DESIGN NOR ANY PART THEREOF MAY BE DUPLICATED IN ANY WAY FOR OTHER PROJECTS, EXCEPT BY WRITTEN AGREEMENT WITH CORRPRO COMPANIES, INC.

