

STANDARD LEGEND

NOTE: ALL SYMBOLS MAY NOT BE USED



REMINGTON & VERNICK ENGINEERS
 2059 SPRINGDALE ROAD
 CHERRY HILL, NJ 08003
 (856) 795-9595, FAX (856) 795-1882
 WEB SITE ADDRESS : WWW.RVE.COM
 Certification of Authorization: 24 CA 28003300
 ~ENGINEERING EXCELLENCE~

DATE: 06/03/2022
KIM C. WESTEN
 NJ PROFESSIONAL ENGINEER LIC. No. 47013

PLANS WHICH DO NOT BEAR AN EMBOSSED SEAL ARE NOT VALID

ALL DOCUMENTS PREPARED BY REMINGTON & VERNICK ENGINEERS AND AFFILIATES ARE INSTRUMENTS OF SERVICE IN RESPECT OF THE PROJECT. THEY ARE NOT INTENDED OR REPRESENTED TO BE SUITABLE FOR REUSE BY OWNER OR OTHERS ON EXTENSIONS OF THE PROJECT OR ON ANY OTHER PROJECT. ANY REUSE WITHOUT WRITTEN VERIFICATION OR ADAPTATION BY REMINGTON & VERNICK ENGINEERS AND AFFILIATES FOR THE SPECIFIC PURPOSE INTENDED WILL BE AT OWNERS SOLE RISK AND WITHOUT LIABILITY OR LEGAL EXPOSURE TO REMINGTON & VERNICK ENGINEERS AND AFFILIATES. AND OWNER SHALL INDEMNIFY AND HOLD HARMLESS REMINGTON & VERNICK ENGINEERS AND AFFILIATES FROM ALL CLAIMS, DAMAGES, LOSSES AND EXPENSES ARISING OUT OF OR RESULTING THEREFROM.

| ITEM | DESCRIPTION | EXISTING | PROPOSED |
|------|----------------------------|----------|----------|
| | OVERHEAD WIRE | | |
| | SANITARY FORCE MAIN PIPE | | |
| | STORM SEWER PIPE ≤ 12" | | |
| | STORM SEWER PIPE > 12" | | |
| | GAS SERVICE | | |
| | SANITARY SEWER PIPE ≤ 12" | | |
| | SANITARY SEWER PIPE > 12" | | |
| | ELECTRIC SERVICE | | |
| | FIBER OPTIC SERVICE | | |
| | TELEPHONE SERVICE | | |
| | COMMUNICATIONS SERVICE | | |
| | IRRIGATION PIPE | | |
| | WATER SERVICE | | |
| | WATER SHUT-OFF | | |
| | WATER METER | | |
| | WATER VALVE | | |
| | WATER HYDRANT | | |
| | WELL | | |
| | YARD HYDRANT | | |
| | METER PIT | | |
| | GAS SHUT-OFF | | |
| | GAS METER | | |
| | GAS VALVE | | |
| | GAS LINE MARKER | | |
| | CLEANOUT | | |
| | SEWER VENT | | |
| | INLET TYPE A | | |
| | INLET TYPE B | | |
| | INLET TYPE E | | |
| | AREA DRAIN | | |
| | MANHOLES | | |
| | IRRIGATION CONTROL VALVE | | |
| | IRRIGATION BOX | | |
| | IRRIGATION CONTROL BOX | | |
| | SPRINKLER HEAD | | |
| | UNKNOWN VALVE | | |
| | COMMUNICATIONS PEDESTAL | | |
| | COMMUNICATIONS LINE MARKER | | |
| | TELEPHONE PEDESTAL | | |
| | TELEPHONE LINE MARKER | | |
| | ELEC. BOX | | |
| | ELEC. METER | | |
| | ELEC. TRANSFORMER PAD | | |
| | ELEC. VAULT | | |
| | ELEC. LINE MARKER | | |
| | UTILITY POLE | | |
| | GUY ANCHOR | | |
| | ELEC. OUTLET | | |
| | LIGHTS | | |
| | VENT | | |
| | VENT PIPE | | |

| ITEM | DESCRIPTION | EXISTING | PROPOSED |
|-----------------------------|---------------------------|----------|----------|
| SURVEY | CROWS FOOT | | |
| | AERIAL TARGET | | |
| | CONCRETE MONUMENT | | |
| | PK / MAG NAIL | | |
| | DRILL HOLE SPIKE | | |
| | DRILL HOLE W/ WINGS | | |
| | STAKE | | |
| | HUB | | |
| | PIN W/ CAP | | |
| | IRON PIPE | | |
| | IRON PIN | | |
| | CROSS CUT | | |
| | DISK | | |
| | STONE | | |
| | REBAR | | |
| | BASELINE | | |
| | CENTERLINE | | |
| | EASEMENT | | |
| RIGHT-OF-WAY | | | |
| PROPERTY BOUNDARY | | | |
| ADJACENT PROPERTY BOUNDARY | | | |
| RAILROAD TRACKS | | | |
| STATE BOUNDARY | | | |
| MUNICIPAL / COUNTY BOUNDARY | | | |
| ENVIRONMENTAL | BORING LOCATION | | |
| | MONITORING WELL LOCATION | | |
| | TEST PIT LOCATION | | |
| | FRESHWATER WETLAND FLAG | | |
| | FRESHWATER WETLAND LINE | | |
| | FRESHWATER WETLAND BUFFER | | |
| EDGE OF WATER | | | |
| STREAM CENTERLINE | | | |
| LANDSCAPING | GRASS/SOD | | |
| | DECIDUOUS TREE | | |
| | SHRUBS / BUSH | | |
| | EVERGREENS | | |
| | STUMP | | |
| | WOODS / TREE LINE | | |
| | WIRE FENCE | | |
| | SPLIT RAIL FENCE | | |
| | WOOD / VINYL FENCE | | |
| | CHAIN-LINK FENCE | | |
| GRADING | TOP OF BANK / DITCH | | |
| | BOTTOM OF BANK / DITCH | | |
| | CONTOUR (MAJOR) | | |
| | CONTOUR (MINOR) | | |
| | FLOW LINE / SWALE | | |
| | TIME OF CONCENTRATION | | |
| | SPOT GRADE | | |
| | ROADWAY GRADE | | |
| DRAINAGE FLOW | | | |

| ITEM | DESCRIPTION | EXISTING | PROPOSED |
|------------------------------|---------------------------------|----------|----------|
| SITE & ROADWORK | EDGE OF PAVEMENT | | |
| | CURB | | |
| | PAVEMENT / CONC. / SIDEWALK | | |
| | LIMIT OF EXCAVATION | | |
| | GUIDE RAIL | | |
| | BOLLARD | | |
| | MAILBOX | | |
| | SIGNS | | |
| | FLAG POLE | | |
| | BENCH | | |
| | PILE | | |
| | DETECTABLE WARNING SURFACE | | |
| | TYPICAL STRIPING | | |
| | ADA STRIPING | | |
| | TRAFFIC CONTROL BOX | | |
| | TRAFFIC LIGHT | | |
| | DEPT. OF TRANSPORTATION MANHOLE | | |
| | STATE HIGHWAY DEPARTMENT | | |
| RAILROAD CROSSING BEACON | | | |
| CALL BOX | | | |
| OIL FILL | | | |
| UNDERGROUND STORAGE TANK LID | | | |
| RISER PIPE | | | |
| RAISED PAVEMENT MARKER | | | |
| MISC. | BBQ GRILL | | |
| | WATER FOUNTAIN | | |
| | KIOSK | | |
| | AIR CONDITIONER | | |
| | PARKING METER | | |
| | FIRE CONTROL VALVE | | |
| BARRICADE | | | |
| GENERAL | PHOTO LOCATION | | |
| | BENCHMARK LOCATION | | |
| | TYPICAL SECTION ARROW | | |
| | MATCH LINE | | |
| ABBREVIATIONS | TYPICAL NORTH ARROW | | |

| NO. | REVISION | DATE | BY | CHK |
|-----|----------|------|----|-----|
| | | | | |
| | | | | |
| | | | | |
| | | | | |
| | | | | |
| | | | | |
| | | | | |
| | | | | |
| | | | | |
| | | | | |

LEGEND

SOUTH JERSEY PORT CORPORATION
 SECURITY PERIMETER BARRIER WALL
 BALZANO MARINE TERMINAL
 CAMDEN COUNTY
 NEW JERSEY
 CITY OF CAMDEN

DATE: 2/23/2022
 JOB No.: 3965X001
 SCALE: AS NOTED
 SHEET No.: 2 of 9

GENERAL NOTES:

- 1. CONTRACTOR SHALL PROVIDE DESIGN, LAYOUT DRAWINGS, AND CALCULATIONS FOR THE BARRIER WALL AND DRILLED PIER FOUNDATIONS. THE DRAWINGS AND CALCULATIONS SHALL BE SIGNED AND SEALED BY A PROFESSIONAL ENGINEER LICENSED IN THE STATE OF NEW JERSEY.
2. THE BARRIER WALL SHALL BE PROVIDED BY FADDIS CONCRETE PRODUCTS OR APPROVED EQUAL.
CONTACT: GARY S. FIGALLO 201-888-1553 GFIGALLO@FADDIS.COM
3. THE 2019 NJDOT STANDARD SPECIFICATIONS FOR ROAD AND BRIDGE CONSTRUCTION, INCLUDING ALL BASELINE DOCUMENT CHANGES THROUGH MAY 2022, SHALL GOVERN ON THIS PROJECT UNLESS OTHERWISE NOTED.
4. A GEOTECHNICAL REPORT PREPARED BY REMINGTON & VERNICK ENGINEERS DATED MARCH 17, 2021 IS PROVIDED IN THE CONTRACT DOCUMENTS. ANY ADDITIONAL GEOTECHNICAL INFORMATION NEEDED FOR THE DESIGN OF THE WALL FOUNDATIONS SHALL BE THE RESPONSIBILITY OF THE CONTRACTOR. THE COST OF THIS ADDITIONAL WORK, IF REQUIRED, SHALL BE INCLUDED IN THE VARIOUS BID ITEMS.
5. CONTRACTOR SHALL VERIFY ALL DIMENSIONS AND EXISTING CONDITIONS IN THE FIELD PRIOR TO THE START OF THE CONSTRUCTION. ANY ERRORS OR DISCREPANCIES SHALL BE BROUGHT TO THE ATTENTION OF THE ENGINEER IMMEDIATELY.
6. LOCATION OF EXISTING UTILITIES ARE APPROXIMATE AND MUST BE VERIFIED IN THE FIELD PRIOR TO THE START OF CONSTRUCTION. COST FOR PRIVATE THIRD PARTY UTILITY MARKOUTS SHALL BE BORNE BY THE CONTRACTOR.
7. THE CONTRACTOR SHALL USE EXCAVATED MATERIALS FOR BACKFILL UNLESS OTHERWISE DIRECTED BY THE ENGINEER.
8. ALL PAVED AND CONCRETE AREAS DISTRIBUTED DURING CONSTRUCTION SHALL BE RESTORED TO A CONDITION AT LEAST EQUAL TO THAT WHICH EXISTED PRIOR TO THE START OF CONSTRUCTION.
9. ALL GRASSED OR WOODED AREAS DISTRIBUTED DURING CONSTRUCTION SHALL BE TOPSOILED AND SEEDED.
10. ALL FILL SHALL BE PLACED IN 12" LAYERS AND THOROUGHLY COMPACTED TO THE SATISFACTION OF THE ENGINEER. IF BORROW FILL IS REQUIRED, IT SHALL BE SUBJECT TO THE APPROVAL OF THE ENGINEER.
11. THE CONTRACTOR SHALL BE RESPONSIBLE FOR THE LOCATION AND PRESERVATION OF THE UNDERGROUND AND SURFACE UTILITIES AND STRUCTURES AT OR ADJACENT TO THE SITE OF CONSTRUCTION AND IT SHALL BE AT HIS OWN EXPENSE TO REPAIR OR REPLACE ANYTHING THAT HE DAMAGES.
12. APPROXIMATE DEPTH OF ALL WATER MAINS ARE ± 4 FEET.
13. APPROXIMATE DEPTH OF ALL GAS MAINS ARE ± 3 FEET.
14. ALL UNUSED AND REGULATED MATERIAL EXCAVATED FROM THE PROJECT SITE ARE TO BE DISPOSED OF AT AN APPROVED FACILITY.
15. ADDITIONAL TESTING FOR LEGAL DISPOSAL OF REGULATED MATERIAL SHALL BE THE RESPONSIBILITY OF THE CONTRACTOR. MATERIAL SHALL BE STOCKPILED ON SITE UNTIL TESTING RESULTS RECEIVED. SEPARATE PAYMENT WILL NOT BE MADE FOR MATERIAL TESTING. ALL ASSOCIATED COSTS SHALL BE INCLUDED IN THE PRICE BID FOR REMOVAL AND DISPOSAL OF REGULATED MATERIAL.

STRUCTURAL NOTES:

- 1. DESIGN SPECIFICATIONS:
A. 1989 AASHTO "GUIDE SPECIFICATIONS FOR STRUCTURAL DESIGN OF SOUND BARRIERS" (WITH INTERIMS).
B. AASHTO "STANDARD SPECIFICATIONS FOR TRANSPORTATION MATERIAL AND METHODS OF SAMPLING AND TESTING, 15TH EDITION.
C. ACI 318-19 "BUILDING CODE REQUIREMENTS FOR STRUCTURAL CONCRETE".
D. NJDOT DESIGN MANUAL FOR BRIDGES AND STRUCTURES 6TH EDITION, 2016 INCLUDING ALL BASELINE DOCUMENT CHANGES.
2. UNFACTORED DESIGN LOAD:
WIND PRESSURE: 40 PSF CORRESPONDING TO A WIND VELOCITY OF 80 MPH, AS SPECIFIED IN TABLE 40-1 OF SECTION 40 OF NJDOT DESIGN MANUAL FOR BRIDGES AND STRUCTURES.
ICE LOAD: 3 PSF
LATERAL MATERIAL LOAD ON WALL: 40 PSF
3. ALL DIMENSIONS SHOWN ARE IN FT-IN, UNLESS OTHERWISE NOTED.
4. INSTALL ANCHOR BOLTS, POSTS, AND PANELS TRULY VERTICAL.
5. PROVIDE PLAIN NEOPRENE BEARING PADS WITH A DUROMETER HARDNESS OF 50 ±5.
6. PROVIDE SHIMS AS REQUIRED.
7. CHAMFER EXPOSED CONCRETE EDGES ON THE PRECAST CONCRETE PANELS 1/2" x 1/2", EXCEPT AS NOTED.
8. PROVIDE 1 1/2" MIN. CONCRETE COVER ON ALL REINFORCEMENT BARS IN PANELS, EXCEPT AS NOTED.
9. FABRICATE POSTS WITH A SMOOTH FORM TEXTURE ON ALL SIDES EXCEPT THE OUTSIDE FACE. OUTSIDE FACE OF POSTS TO HAVE BROOM FINISH.
10. FABRICATE PANELS WITH SURFACE TREATMENTS AS DETAILED IN THE PLANS.
11. LIFTING INSERTS TO BE PATTERSON QUICK LIFT ERECTION ANCHOR WITH SHEAR PLATE (PART #QL3126) OR EQUAL FOR PRECAST PANELS.
12. THE CONTRACTOR IS RESPONSIBLE TO VERIFY ALL DIMENSIONS AND GEOMETRY IN THE FIELD AS NECESSARY FOR PROPER FIT OF THE PROPOSED CONSTRUCTION.

DEMOLITION NOTES:

- 1. DEMOLITION OF EXISTING CHAIN-LINK FENCE INCLUDES THE REMOVAL AND DISPOSAL OF ALL FENCING MATERIAL INCLUDING, BUT NOT LIMITED TO, MESH, POSTS, AND HARDWARE. THE REMOVAL OF ALL CONCRETE POST FOUNDATIONS IS ALSO INCLUDED. ANY PAVEMENT DAMAGED/DISTURBED DURING FENCE REMOVAL SHALL ALSO BE REMOVED AND DISPOSED OF AT NO ADDITIONAL COST.
2. THE EXISTING CHAIN-LINK FENCE HAS BEEN FORTIFIED WITH SHIPPING CONTAINERS. CONTRACTOR SHALL COORDINATE HANDLING/MOVING OF THE CONTAINERS WITH SJPC. SJPC SHALL RELOCATE CONTAINERS.
3. A SECURE PERIMETER MUST BE MAINTAINED AT ALL TIMES. THE LENGTH OF EXISTING FENCE/CONTAINERS ALLOWED TO BE REMOVED AT ONE TIME IS LIMITED TO 400'. TEMPORARY SECURITY FENCING IS REQUIRED.
4. TEMPORARY SECURITY FENCE SHALL BE 8' HIGH WITH POSTS DRIVEN INTO THE GROUND AND REMOVED UPON COMPLETION OF PERMANENT CONSTRUCTION. TEMPORARY FENCING ON STANCHIONS WILL NOT BE ACCEPTABLE.
5. THE SECURITY OF THE PERIMETER IS DETERMINED BY THE PORT. ALL REQUIREMENTS OF THE PORT MUST BE COMPLIED WITH. NO SEPARATE PAYMENT WILL BE MADE FOR MEASURES REQUIRED TO MAINTAIN A SECURE PERIMETER. THE COST SHALL BE INCLUDED IN THE VARIOUS BID ITEMS.

MATERIAL NOTES:

- 1. CONCRETE
A. CLASSES OF CONCRETE:
a. NJDOT CLASS OF CONCRETE USED:
CLASS P CONCRETE FOR POST AND PANELS
CLASS B CONCRETE FOR FOUNDATIONS, PEDESTALS, AND MATS
b. NJDOT CLASS DESIGN STRENGTHS (MIX DESIGN REQUIREMENTS)
CLASS P = 5,500 PSI
CLASS B = 3,700 PSI
B. TESTING OF CAST-IN-PLACE CONCRETE
a. DURING THE PROGRESS OF THE WORK, TEST SHALL BE MADE BY AN APPROVED LABORATORY IN ACCORDANCE WITH THE STANDARD METHOD OF MAKING AND CURING CONCRETE COMPRESSION AND FLEXURE TEST SPECIMENS IN THE FIELD, A.S.T.M. DESIGNATION: C-31. COST OF ALL CONCRETE TESTS SHALL BE BORNE BY CONTRACTOR, WHO SHALL PROVIDE MOLDS AND SLUMP CONE ON THE PROJECT. CASTING OF ALL TEST CYLINDERS SHALL BE MADE UNDER OBSERVATION OF THE ENGINEER.
b. PROVING TEST SHALL CONSIST OF AT LEAST SIX (6) CYLINDERS FOR EACH 50 CUBIC YARD OF CONCRETE OF WHICH TWO (2) SHALL BE BROKEN AT 7 DAYS AND TWO (2) AT 28 DAYS WITH TWO (2) HELD FOR 56 DAY BREAK, IF NECESSARY. IMMEDIATELY FOLLOWING EACH LABORATORY TEST, ENGINEER SHALL BE FURNISHED WITH A CERTIFIED TEST REPORT IN DUPLICATE.
c. WHERE THE AVERAGE STRENGTH OF THE CYLINDERS SHOWN BY THESE TESTS FOR ANY PORTIONS OF THE STRUCTURE FALLS BELOW THE MINIMUM ULTIMATE COMPRESSIVE STRENGTHS CALLED FOR, THE ENGINEER SHALL HAVE THE RIGHT TO ORDER A CHANGE IN THE MIX OR IN THE WATER CONTENT FOR REMAINING PORTION OF STRUCTURE, OR REQUIRED CONDITIONS OF TEMPERATURE AND MOISTURE MAINTAINED TO SECURE THE REQUIRED STRENGTH AND MAY REQUIRE LOAD TESTS TO BE MADE ON THE PORTIONS OF THE STRUCTURE SO AFFECTED. SHOULD RESULTS OF LOAD TEST BE UNSATISFACTORY, CONCRETE SHALL BE REMOVED AND NEW CONCRETE PLACED AT NO COST TO OWNER.
d. NO SEPARATE PAYMENT WILL BE MADE FOR TESTING. ALL ASSOCIATED COSTS SHALL BE INCLUDED IN THE VARIOUS CONCRETE BID ITEMS.
2. REINFORCEMENT STEEL:
A. PROVIDE GRADE 60 DEFORMED UNCOATED REINFORCING BARS CONFORMING TO ASTM A615/A615M, A996/A996M, AND A706/A706M. COLD GALVANIZE THE BOTTOM 10" (INCLUDING THREADS) FOR THE VERTICAL BARS USING ZRC SPRAY OR EQUAL. DO NOT SPLICE THE VERTICAL REINFORCING BARS IN THE PRECAST CONCRETE POSTS.
3. WELDED WIRE FABRIC:
A. PROVIDE GRADE 70 OR HIGHER DEFORMED UNCOATED WELDED WIRE FABRIC THAT MEET THE REQUIREMENTS OF ASTM A1064 IN THE PRECAST CONCRETE PANELS. IF ANY SPLICING OF THE MESH IN THE PANELS IS REQUIRED, IT SHALL BE NO LESS THAN TWO (2) SQUARES OF THE MESH.
4. ANCHOR BOLTS, NUTS, & WASHERS:
A. PROVIDE ANCHOR BOLTS CONFORMING TO ASTM F1554, GRADE 105.
B. PROVIDE HEAVY HEX NUTS CONFORMING TO ASTM A563DH.
C. PROVIDE PLATE WASHERS CONFORMING TO ASTM A36.
D. PROVIDE LOCK WASHERS AND FLAT WASHERS CONFORMING TO ASTM F436.
E. GALVANIZE ALL ANCHOR BOLTS AND HARDWARE IN ACCORDANCE WITH ASTM A153.
5. BASE PLATES:
A. PROVIDE STRUCTURAL STEEL CONFORMING TO ASTM A572, GRADE 50.
B. GALVANIZE PLATES IN ACCORDANCE WITH ASTM A123.
C. REPAIR DAMAGED GALVANIZING IN ACCORDANCE WITH ASTM 708.
6. CHAIN LINK FABRIC
A. STEEL CHAIN LINK FABRIC: 2IN. MESH, 9 GAUGE, 8FT. HIGH
e. ZINC-COATED STEEL FABRIC: ASTM A392 HOT DIPPED GALVANIZED BEFORE OR AFTER WEAVING.
f. CLASS 1 - 1.2 OZ/FT²
B. FABRIC SELVAGE:
STANDARD FABRIC SELVAGE FOR 2 IN (50 MM) MESH 72 IN. (1.8 M) HIGH AND OVER IS KNUCKLE FINISH AT ONE END, TWIST AT THE OTHER, K&T. FABRIC LESS THAN 72 IN (1.8 M), AND MESH SIZE LESS THAN 2 IN. (50 MM), KNUCKLE FINISH TOP AND BOTTOM, K&K. T&T AVAILABLE FOR 2" (50 MM) MESH.
7. STEEL FENCE FRAMEWORK
A. ROUND STEEL PIPE AND RAIL: ASTM F1043 GROUP IA HEAVY INDUSTRIAL FENCE FRAMEWORK, SCHEDULE 40 GALVANIZED PIPE PER ASTM F1083. EXTERIOR HOT DIPPED ZINC COATING MINIMUM AVERAGE 1.8 OZ/FT²
a. LINE POST: 2-1/2" OD
b. END, CORNER, PULL POST: 3" OD
c. TOP, BRACE, BOTTOM AND INTERMEDIATE RAILS, 1-5/8" OD
8. TENSION WIRE
A. METALLIC COATED STEEL TENSION WIRE: 7 GAUGE (0.177 IN.) MARCELLED WIRE COMPLYING WITH ASTM A824
a. TYPE II ZINC-COATED CLASS 4 - 1.2 OZ/FT²
9. BARBED WIRE
A. METALLIC COATED STEEL BARBED WIRE: COMPLY WITH ASTM A121, DESIGN NUMBER 12-4-5-14R, DOUBLE 12-1/2 GAUGE (0.099 IN.) TWISTED STRAND WIRE, WITH 4 POINT 14 GAUGE (0.080 IN.) ROUND BARBS SPACED 5 INCHES ON CENTER.
10. FITTINGS
A. BRACE BANDS AND LINE RAIL CLAMPS: GALVANIZED PRESSED STEEL COMPLYING WITH ASTM F626, STEEL THICKNESS 1/8 IN., BAND WIDTH 1 IN., ZINC COATED 1.20 OZ/FT². SECURE WITH 3/8 IN. GALVANIZED STEEL CARRIAGE BOLTS.
B. TERMINAL POST CAPS, LINE POST LOOP TOPS, RAIL AND BRACE ENDS, BOULEVARD CLAMPS, RAIL SLEEVES: IN COMPLIANCE TO ASTM F626, PRESSED STEEL GALVANIZED AFTER FABRICATION HAVING A MINIMUM ZINC COATING OF 1.20 OZ/FT².
C. TRUSS ROD ASSEMBLY: IN COMPLIANCE WITH ASTM F626, 3/8 IN. DIAMETER STEEL TRUSS ROD WITH A PRESSED STEEL TIGHTENER, MINIMUM ZINC COATING OF 1.2 OZ/FT², ASSEMBLY CAPABLE OF WITHSTANDING A TENSION OF 2,000 LBS. (970 KG).
D. TENSION BARS: IN COMPLIANCE WITH ASTM F626. GALVANIZED STEEL ONE-PIECE LENGTH 2 IN. LESS THAN THE FABRIC HEIGHT. MINIMUM ZINC COATING 1.2 OZ. /FT²
a. BARS FOR 2 IN. AND 1 1/4 IN. MESH SHALL HAVE A MINIMUM CROSS SECTION OF 3/16 IN. (4.8 MM) BY 3/4 IN. (19 MM).
E. BARBED WIRE ARMS: IN COMPLIANCE WITH ASTM F626, PRESSED STEEL GALVANIZED AFTER FABRICATION, MINIMUM ZINC COATING OF 1.20 OZ. /FT², CAPABLE OF SUPPORTING A VERTICAL 250 LB LOAD. TYPE I - THREE STRAND 45 DEGREE (0.785 RAD) ARM.
11. TIE WIRE AND HOG RINGS
A. TIE WIRE AND HOGS RINGS PER ASTM F626. 9 GAUGE (0.148 IN.) GALVANIZED STEEL PREFORMED POWER-FASTENED WIRE TIES, 9 GAUGE (0.148 IN.) GALVANIZED STEEL HOG RINGS. MINIMUM ZINC COATING 1.20 OZ/FT² (366 G/M²) FOR TIES AND HOG RINGS.

ESTIMATE OF QUANTITIES table with columns: ITEM, DESCRIPTION, QTY, UNIT. Rows include MOBILIZATION, CLEARING SITE, DEMOLITION OF EXISTING CHAIN LINK FENCE, EARTHWORK, 60 - 36" DIA. DRILLED PIER, PRECAST CONCRETE BARRIER WALL - TOP PANEL WITH BARBED WIRE TOP, PRECAST CONCRETE BARRIER WALL - BOTTOM PANEL, PRECAST CONCRETE BARRIER WALL - POST, 8 FT. HIGH CHAIN LINK FENCE WITH BARBED WIRE TOP, 10" DIA. PIPE BOLLARS, REINFORCED CONCRETE PAD FOR CONTAINERS, REMOVAL & DISPOSAL OF REGULATED MATERIAL, PRECAST CONCRETE TOP PANEL FOR SJPC STOCK, PRECAST CONCRETE BOTTOM PANEL FOR SJPC STOCK, PRECAST LINE POST FOR SJPC STOCK.



DATE: 06/03/2022
KIM C. WESTEN
NJ PROFESSIONAL ENGINEER LIC. No. 47013

PLANS WHICH DO NOT BEAR AN EMBOSSED SEAL ARE NOT VALID

ALL DOCUMENTS PREPARED BY REMINGTON & VERNICK ENGINEERS AND AFFILIATES ARE INSTRUMENTS OF SERVICE IN RESPECT OF THE PROJECT. THEY ARE NOT INTENDED OR REPRESENTED TO BE SUITABLE FOR REUSE BY OWNER OR OTHERS ON EXTENSIONS OF THE PROJECT OR ON ANY OTHER PROJECT. ANY REUSE WITHOUT WRITTEN VERIFICATION OR ADAPTATION BY REMINGTON & VERNICK ENGINEERS AND AFFILIATES FOR THE SPECIFIC PURPOSE INTENDED WILL BE AT OWNERS SOLE RISK AND WITHOUT LIABILITY OR LEGAL EXPOSURE TO REMINGTON & VERNICK ENGINEERS AND AFFILIATES, AND OWNER SHALL INDEMNIFY AND HOLD HARMLESS REMINGTON & VERNICK ENGINEERS AND AFFILIATES FROM ALL CLAIMS, DAMAGES, LOSSES AND EXPENSES ARISING OUT OF OR RESULTING THEREFROM.

Revision table with columns: No., Description, Date, Revision.

ESTIMATE OF QUANTITIES & GENERAL & STRUCTURAL NOTES
SOUTH JERSEY PORT CORPORATION
SECURITY PERIMETER BARRIER WALL
BALZANO MARINE TERMINAL
CITY OF CAMDEN CAMDEN COUNTY NEW JERSEY

Table with columns: DRAWN BY, DESIGN BY, CHECKED BY, SCALE, DATE, SHEET No. Values: CFC, KCW, DMS, AS NOTED, 2/23/2022, 3 of 9, 3965X001.

EQO-1

\\fs1\production\Blogs\CP\20220001_Resources\of_Balzano_Terminal_Security_Perimeter_Barrier_Wall_Drawing\EQO-3965X001_SouthJerseyPortWall.dwg 6/23/2022 12:31:47 PM



REMINGTON & VERNICK ENGINEERS
 2059 SPRINGDALE ROAD
 CHERRY HILL, NJ 08003
 (856) 795-9595, FAX (856) 795-1882
 WEB SITE ADDRESS : WWW.RVE.COM
 Certification of Authorization: 24 CA 28003300
 "ENGINEERING EXCELLENCE"

DATE: 06/03/2022
KIM C. WESTEN
 NJ PROFESSIONAL ENGINEER LIC. No. 47013

PLANS WHICH DO NOT BEAR AN EMBOSSED SEAL ARE NOT VALID.

ALL DOCUMENTS PREPARED BY REMINGTON & VERNICK ENGINEERS AND AFFILIATES ARE INSTRUMENTS OF SERVICE IN RESPECT OF THE PROJECT. THEY ARE NOT INTENDED OR REPRESENTED TO BE SUITABLE FOR REUSE BY OWNER OR OTHERS ON EXTENSIONS OF THE PROJECT OR ON ANY OTHER PROJECT. ANY REUSE WITHOUT WRITTEN VERIFICATION OR ADAPTATION BY REMINGTON & VERNICK ENGINEERS AND AFFILIATES FOR THE SPECIFIC PURPOSE INTENDED WILL BE AT OWNERS SOLE RISK AND WITHOUT LIABILITY OR LEGAL EXPOSURE TO REMINGTON & VERNICK ENGINEERS AND AFFILIATES. AND OWNER SHALL INDEMNIFY AND HOLD HARMLESS REMINGTON & VERNICK ENGINEERS AND AFFILIATES FROM ALL CLAIMS, DAMAGES, LOSSES AND EXPENSES ARISING OUT OF OR RESULTING THEREFROM.

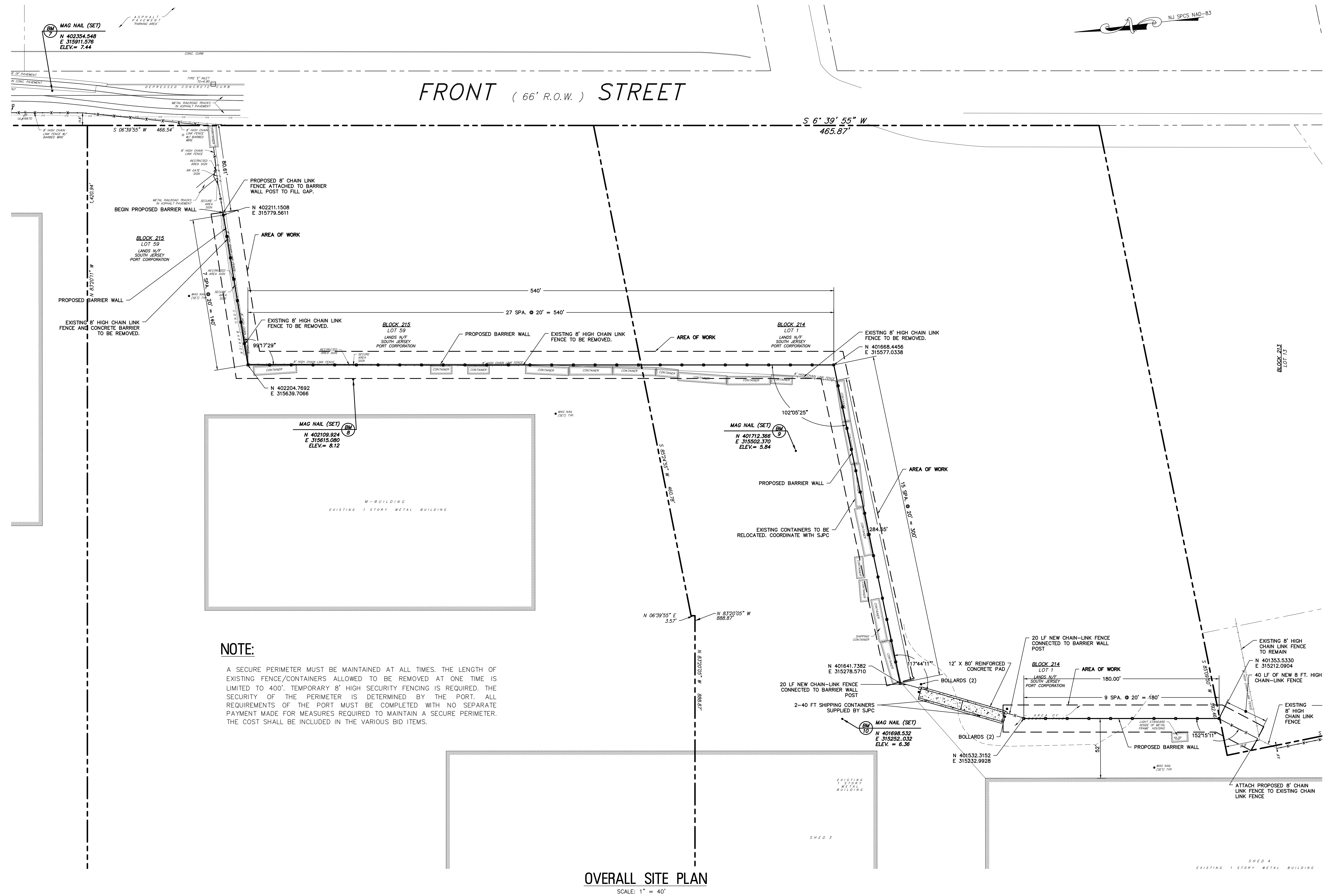
| NO. | REVISION | DATE | BY | CHK |
|-----|----------|------|----|-----|
| | | | | |
| | | | | |
| | | | | |
| | | | | |
| | | | | |
| | | | | |
| | | | | |
| | | | | |
| | | | | |

OVERALL SITE PLAN

SOUTH JERSEY PORT CORPORATION
SECURITY PERIMETER BARRIER WALL
BALZANO MARINE TERMINAL

CITY OF CAMDEN
 CAMDEN COUNTY
 NEW JERSEY

| DRAWN BY: | DESIGN BY: | CHECKED BY: | SCALE: |
|-----------|------------|-------------|----------|
| CFC | KCW | DMS | AS NOTED |
| DATE: | 2/23/2022 | JOB No.: | 3965X001 |
| 4 of 9 | | | S-1 |



NOTE:

A SECURE PERIMETER MUST BE MAINTAINED AT ALL TIMES. THE LENGTH OF EXISTING FENCE/CONTAINERS ALLOWED TO BE REMOVED AT ONE TIME IS LIMITED TO 400'. TEMPORARY 8' HIGH SECURITY FENCING IS REQUIRED. THE SECURITY OF THE PERIMETER IS DETERMINED BY THE PORT. ALL REQUIREMENTS OF THE PORT MUST BE COMPLETED WITH NO SEPARATE PAYMENT MADE FOR MEASURES REQUIRED TO MAINTAIN A SECURE PERIMETER. THE COST SHALL BE INCLUDED IN THE VARIOUS BID ITEMS.



REMINGTON & VERNICK ENGINEERS
 2059 SPRINGDALE ROAD
 CHERRY HILL, NJ 08003
 (856) 795-9595, FAX (856) 795-1882
 WEB SITE ADDRESS : WWW.RVE.COM
 Certification of Authorization: 24 CA 28003300
 "ENGINEERING EXCELLENCE"

K. Westen
 DATE: 06/03/2022
KIM C. WESTEN
 NJ PROFESSIONAL ENGINEER LIC. No. 47013

PLANS WHICH DO NOT BEAR AN EMBOSSED SEAL ARE NOT VALID

ALL DOCUMENTS PREPARED BY REMINGTON & VERNICK ENGINEERS AND AFFILIATES ARE INSTRUMENTS OF SERVICE IN RESPECT OF THE PROJECT. THEY ARE NOT INTENDED OR REPRESENTED TO BE SUITABLE FOR REUSE BY OWNER OR OTHERS ON EXTENSIONS OF THE PROJECT OR ON ANY OTHER PROJECT. ANY REUSE WITHOUT WRITTEN VERIFICATION OR ADAPTATION BY REMINGTON & VERNICK ENGINEERS AND AFFILIATES FOR THE SPECIFIC PURPOSE INTENDED WILL BE AT OWNERS SOLE RISK AND WITHOUT LIABILITY OR LEGAL EXPOSURE TO REMINGTON & VERNICK ENGINEERS AND AFFILIATES. AND OWNER SHALL INDEMNIFY AND HOLD HARMLESS REMINGTON & VERNICK ENGINEERS AND AFFILIATES FROM ALL CLAIMS, DAMAGES, LOSSES AND EXPENSES ARISING OUT OF OR RESULTING THEREFROM.

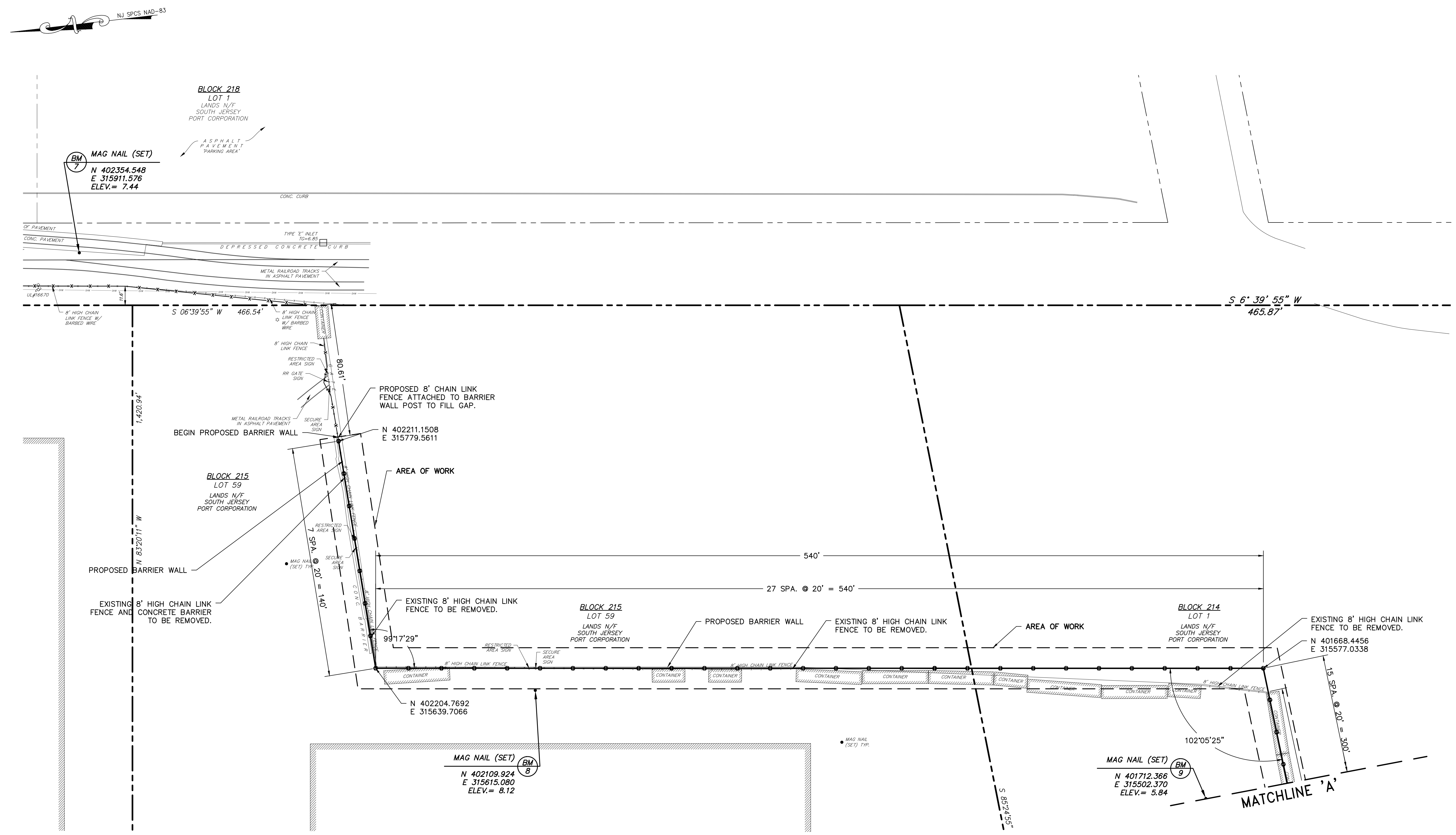
| NO. | REVISION | DATE | BY | CHK |
|-----|----------|------|----|-----|
| | | | | |
| | | | | |
| | | | | |
| | | | | |
| | | | | |
| | | | | |
| | | | | |
| | | | | |
| | | | | |

CONSTRUCTION PLAN

SOUTH JERSEY PORT CORPORATION
SECURITY PERIMETER BARRIER WALL
BALZANO MARINE TERMINAL

CITY OF CAMDEN CAMDEN COUNTY NEW JERSEY

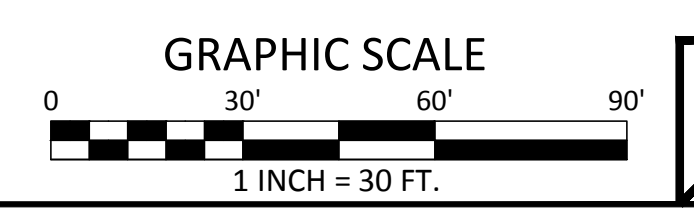
| DRAWN BY: | DESIGN BY: | CHECKED BY: | SCALE: |
|------------|------------|-------------|----------|
| CFC | KCW | DMS | AS NOTED |
| DATE: | 2/23/2022 | | |
| JOB No.: | 3965X001 | | |
| SHEET No.: | 5 of 9 | | |



CONSTRUCTION PLAN
 SCALE: 1" = 30'

NOTE:

1. TEMPORARY 8 FT. HIGH SECURITY FENCE MAYBE REQUIRED TO MAINTAIN A SECURE PORT FACILITY DURING CONSTRUCTION.



C-1
 C-2

RVE
1901
REMINGTON & VERNICK ENGINEERS
2059 SPRINGDALE ROAD
CHERRY HILL, NJ 08003
(856) 795-9595, FAX (856) 795-1882
WEB SITE ADDRESS : WWW.RVE.COM
Certification of Authorization: 24 CA 28003300
-ENGINEERING EXCELLENCE-

DATE: 06/03/2022
KIM C. WESTEN
NJ PROFESSIONAL ENGINEER LIC. No. 47013

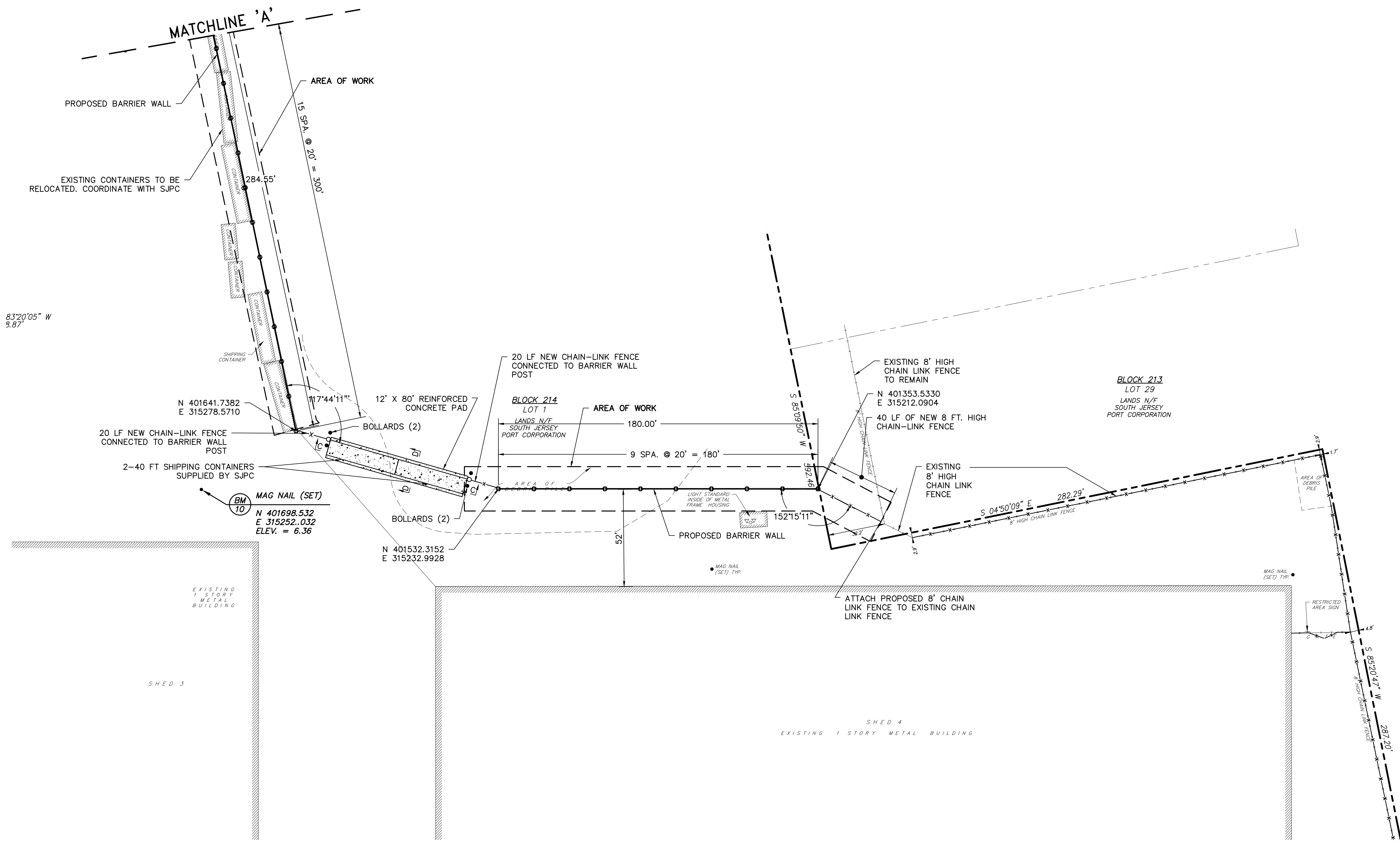
PLANS WHICH DO NOT BEAR AN EMBOSSED SEAL ARE NOT VALID

ALL DOCUMENTS PREPARED BY REMINGTON & VERNICK ENGINEERS AND AFFILIATES ARE INSTRUMENTS OF SERVICE IN RESPECT OF THE PROJECT. THEY ARE NOT INTENDED OR REPRESENTED TO BE SUITABLE FOR REUSE BY OWNER OR OTHERS ON EXTENSIONS OF THE PROJECT OR ON ANY OTHER PROJECT. ANY REUSE WITHOUT WRITTEN VERIFICATION OR ADAPTATION BY REMINGTON & VERNICK ENGINEERS AND AFFILIATES FOR THE SPECIFIC PURPOSE INTENDED WILL BE AT OWNERS SOLE RISK AND WITHOUT LIABILITY OR LEGAL EXPOSURE TO REMINGTON & VERNICK ENGINEERS AND AFFILIATES. AND OWNER SHALL INDEMNIFY AND HOLD HARMLESS REMINGTON & VERNICK ENGINEERS AND AFFILIATES FROM ALL CLAIMS, DAMAGES, LOSSES AND EXPENSES ARISING OUT OF OR RESULTING THEREFROM.

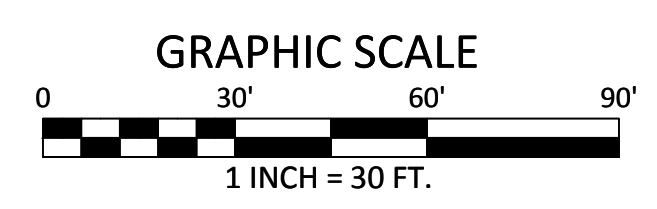
| NO. | REVISION | DATE | BY | CHK |
|-----|----------|------|----|-----|
| | | | | |
| | | | | |
| | | | | |
| | | | | |
| | | | | |
| | | | | |
| | | | | |
| | | | | |
| | | | | |

CONSTRUCTION PLAN
SOUTH JERSEY PORT CORPORATION
SECURITY PERIMETER BARRIER WALL
BALZANO MARINE TERMINAL
CITY OF CAMDEN CAMDEN COUNTY NEW JERSEY

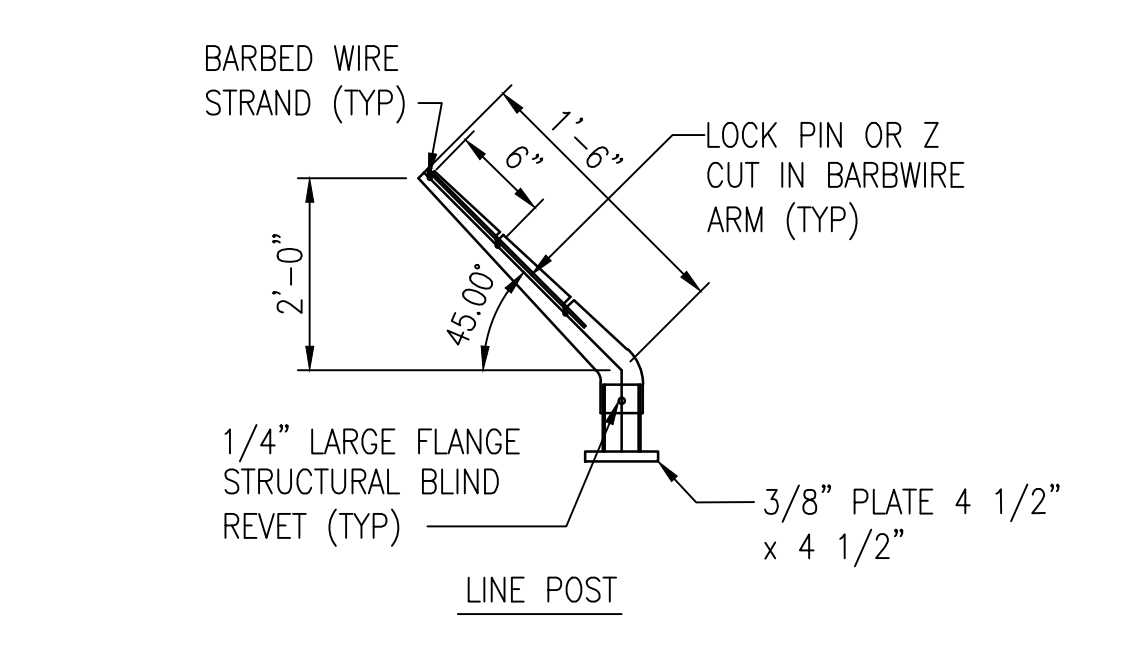
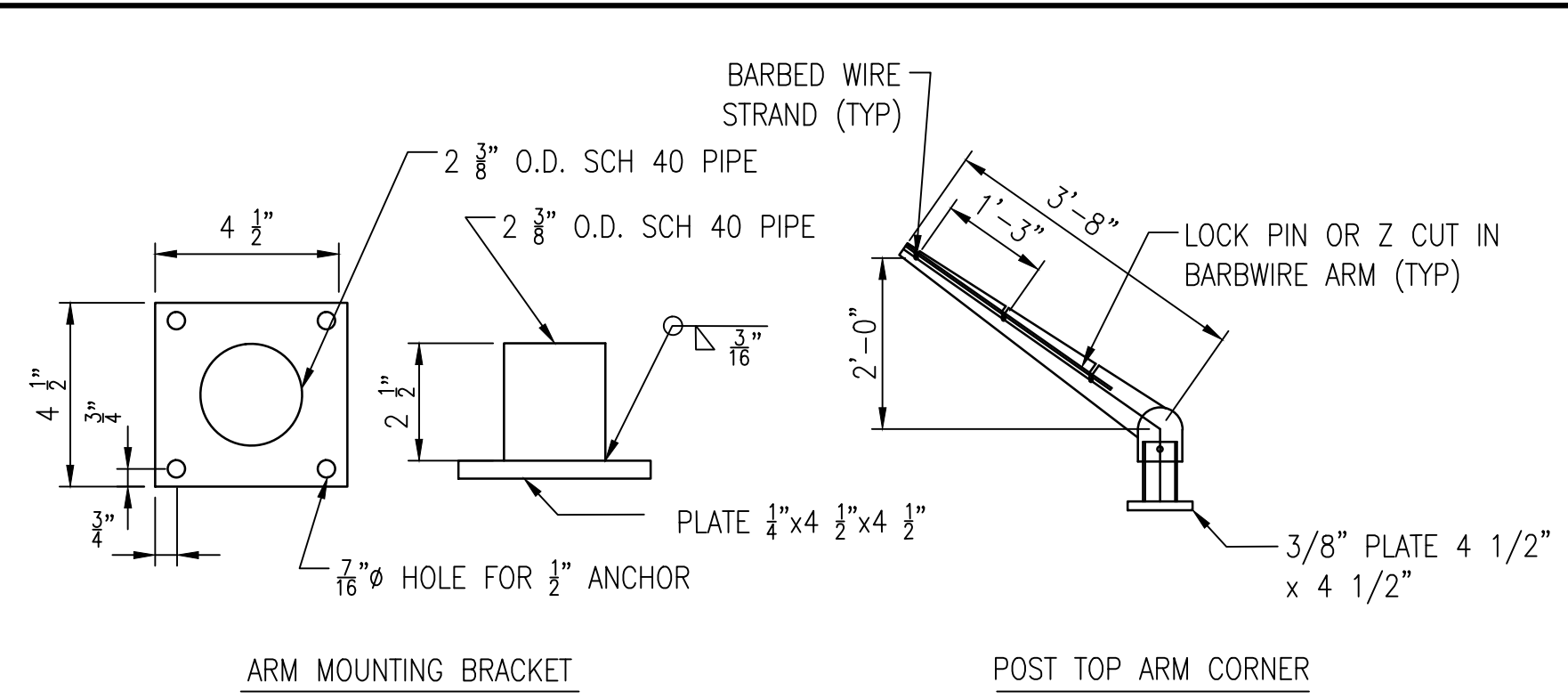
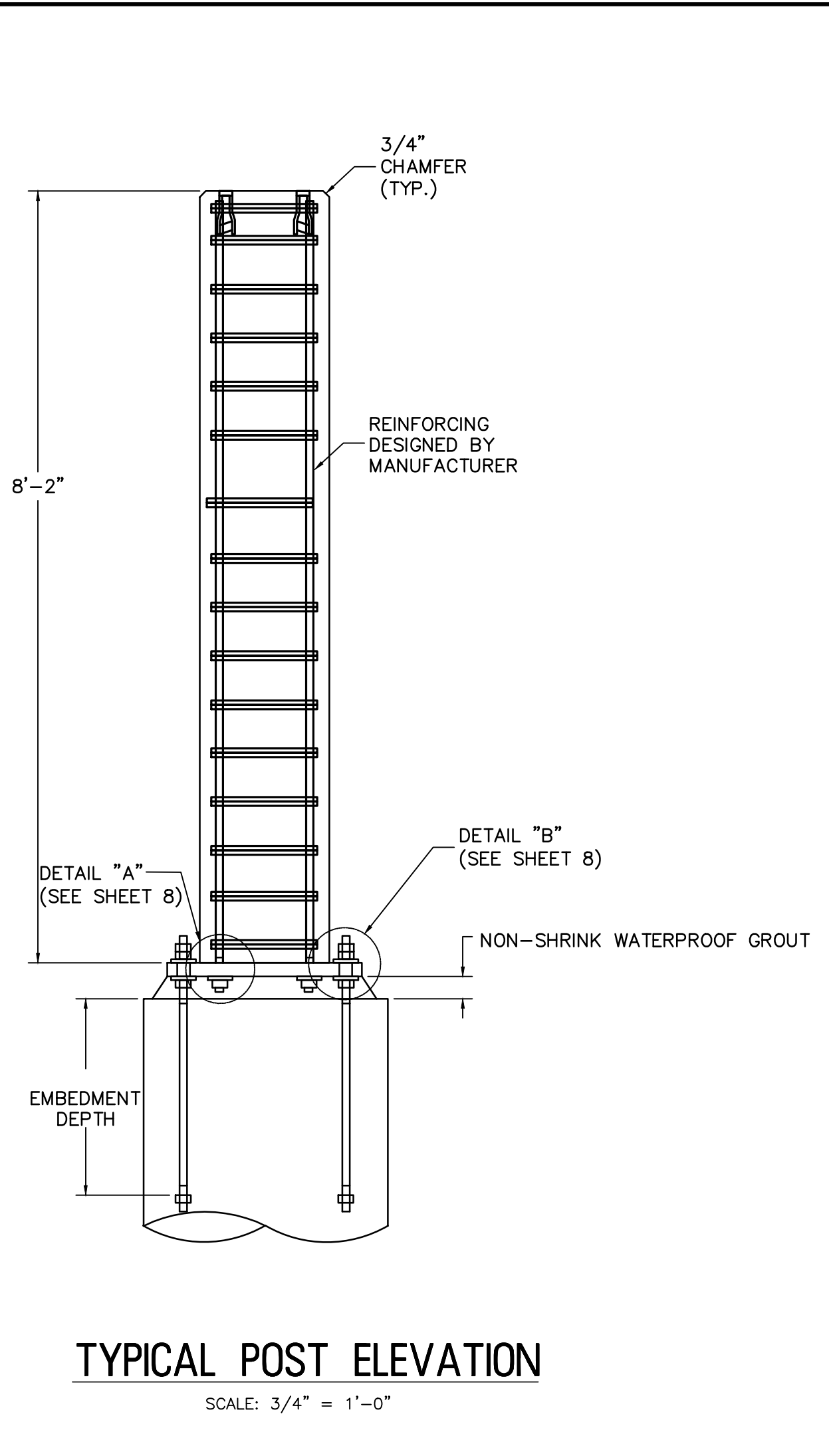
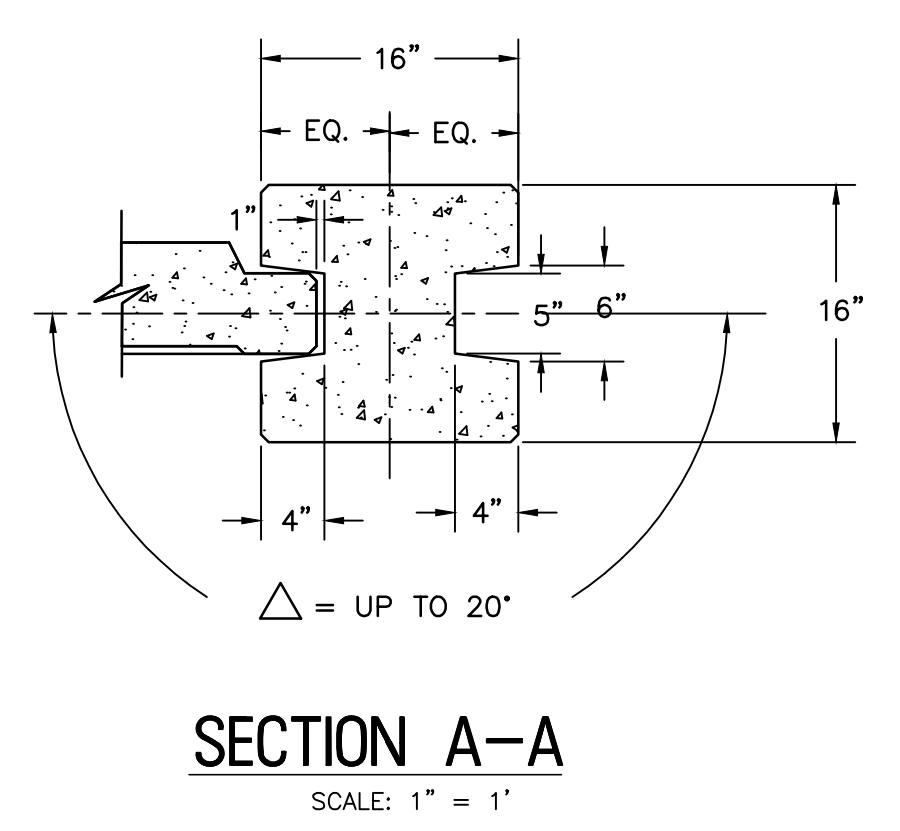
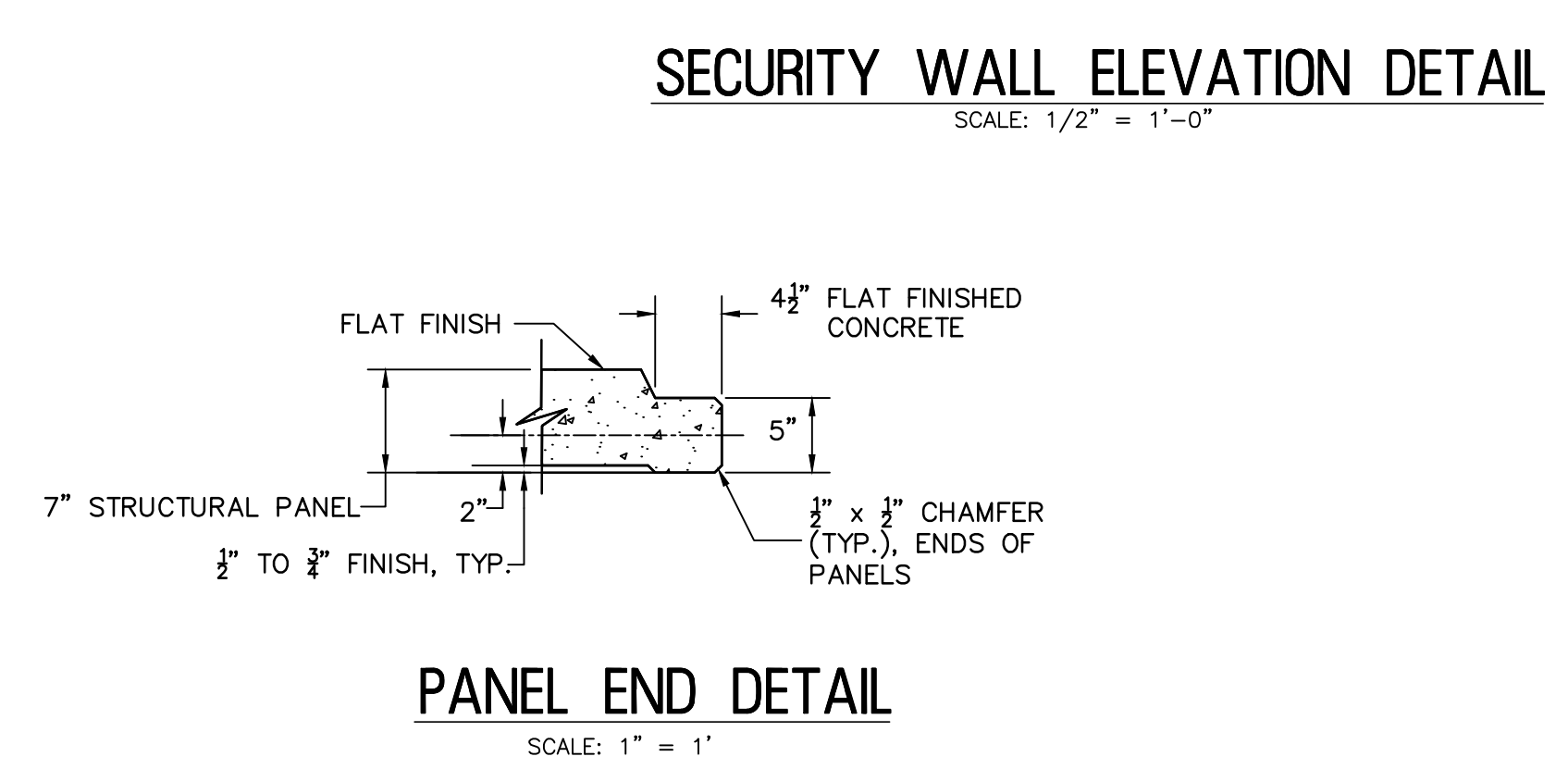
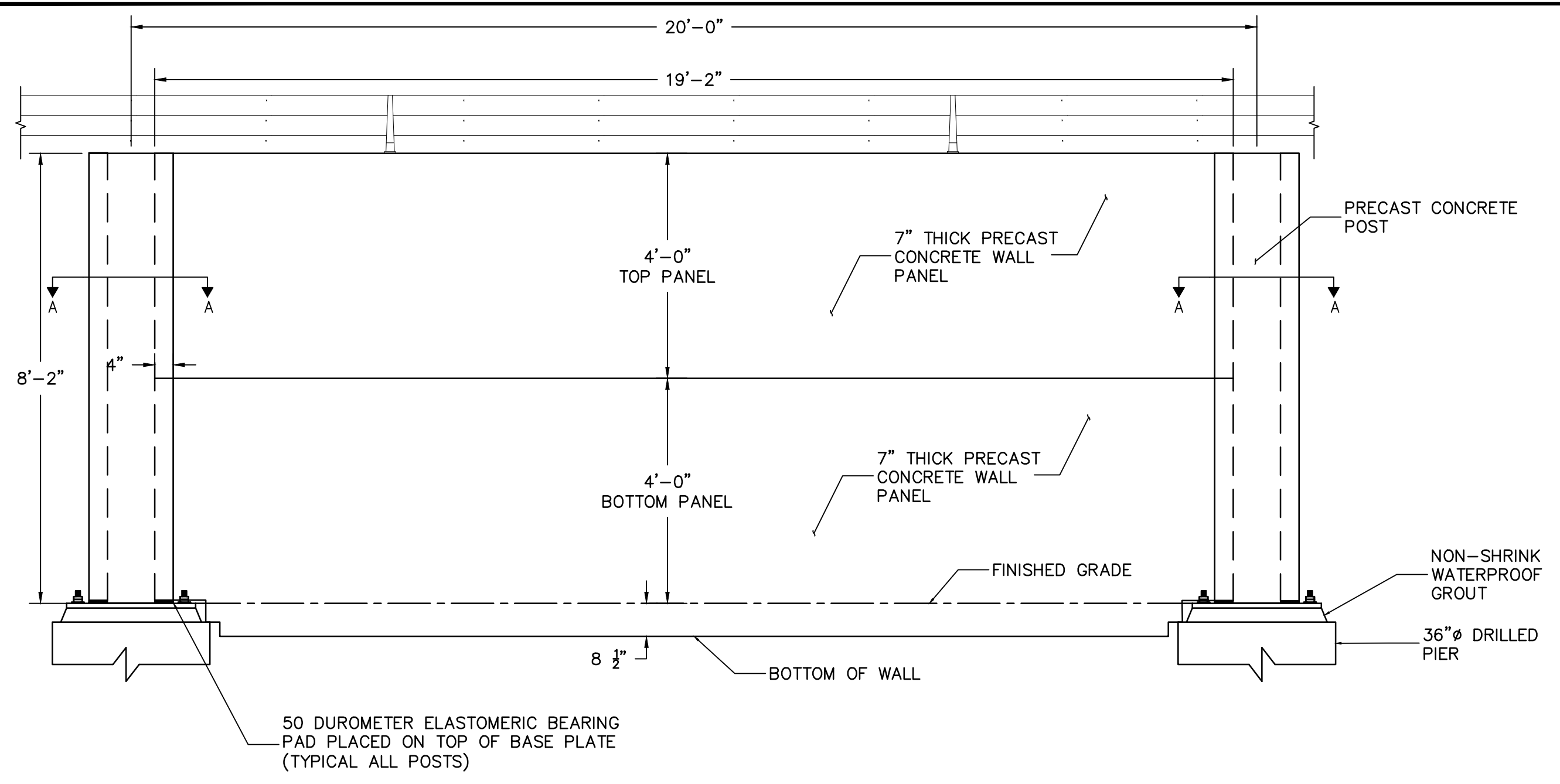
| SCALE: | AS NOTED |
|-----------------|-----------------|
| DRAWN BY: CFC | DESIGN BY: KCW |
| CHECKED BY: DMS | DATE: 2/23/2022 |
| SHEET No.: | 6 of 9 |
| JOB No.: | 3965X001 |



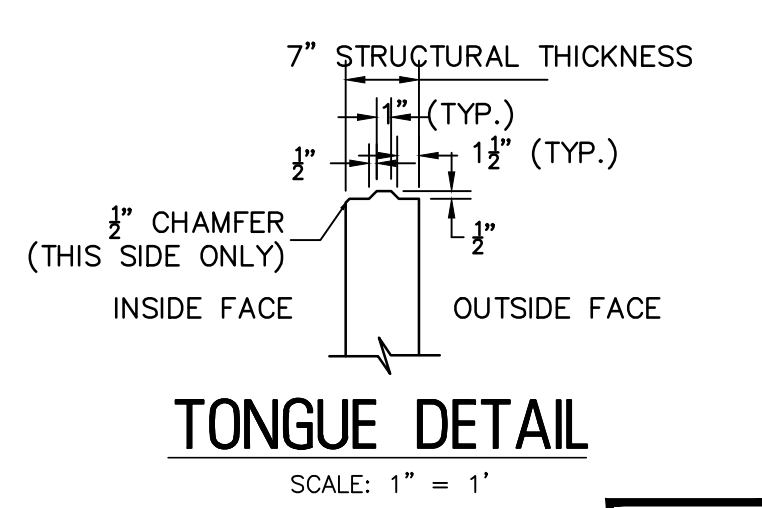
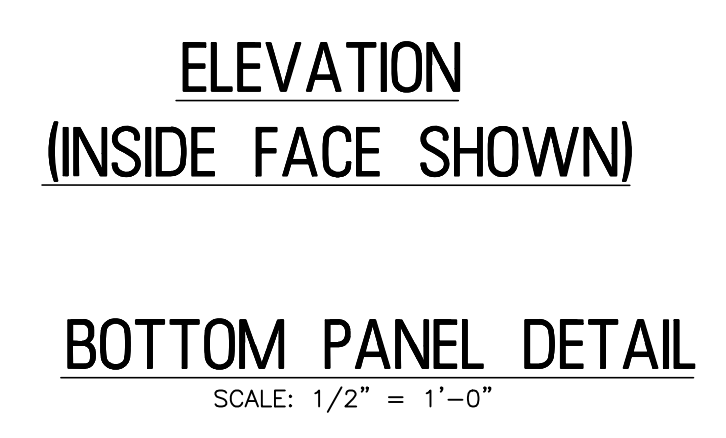
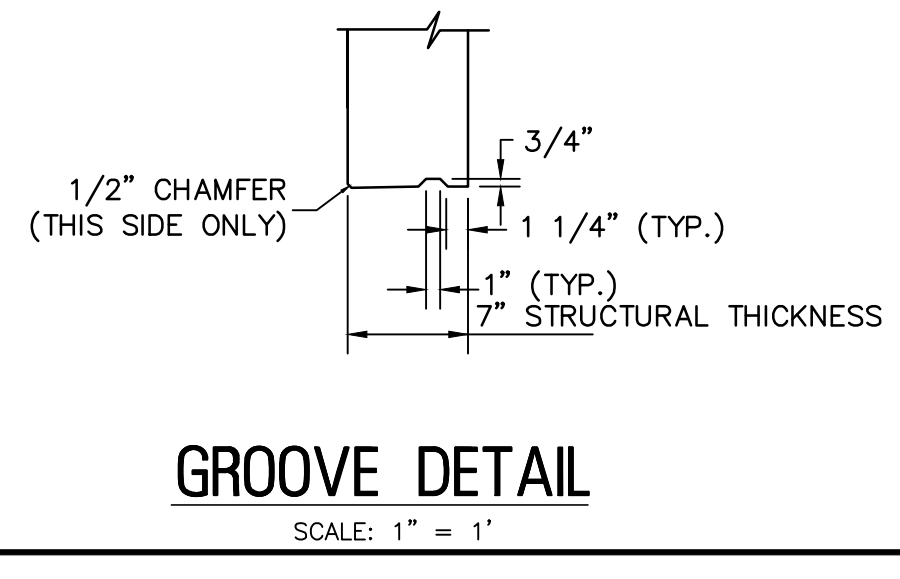
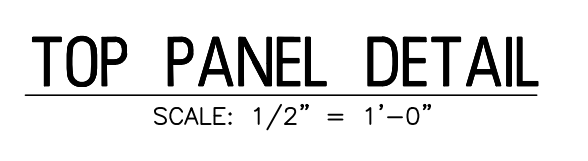
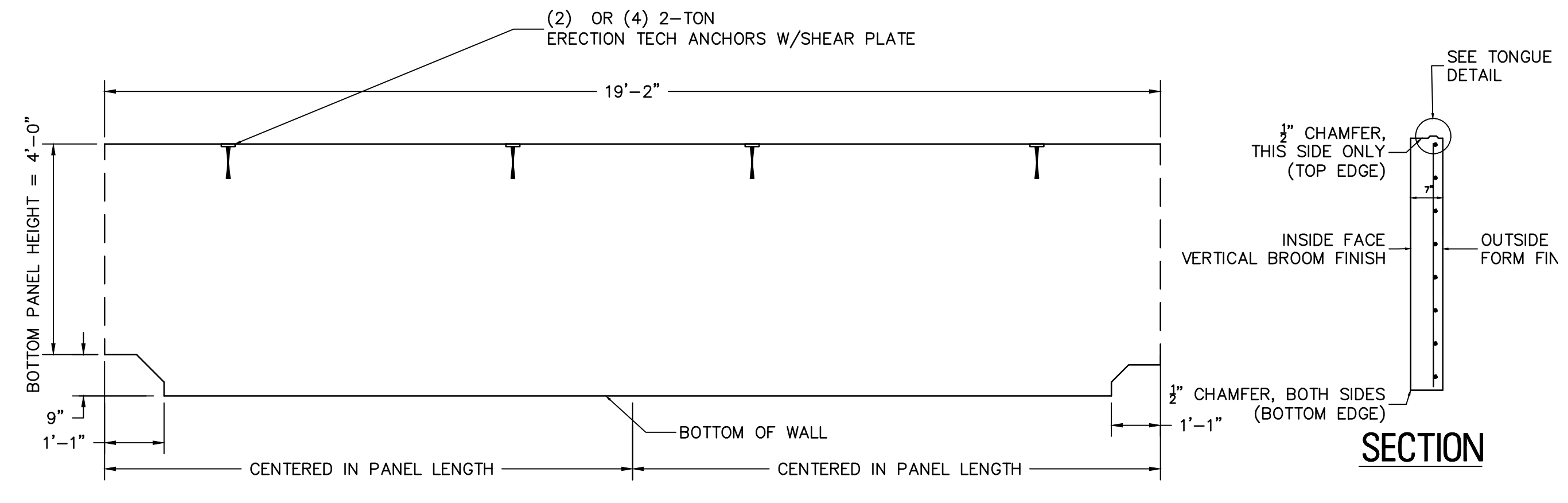
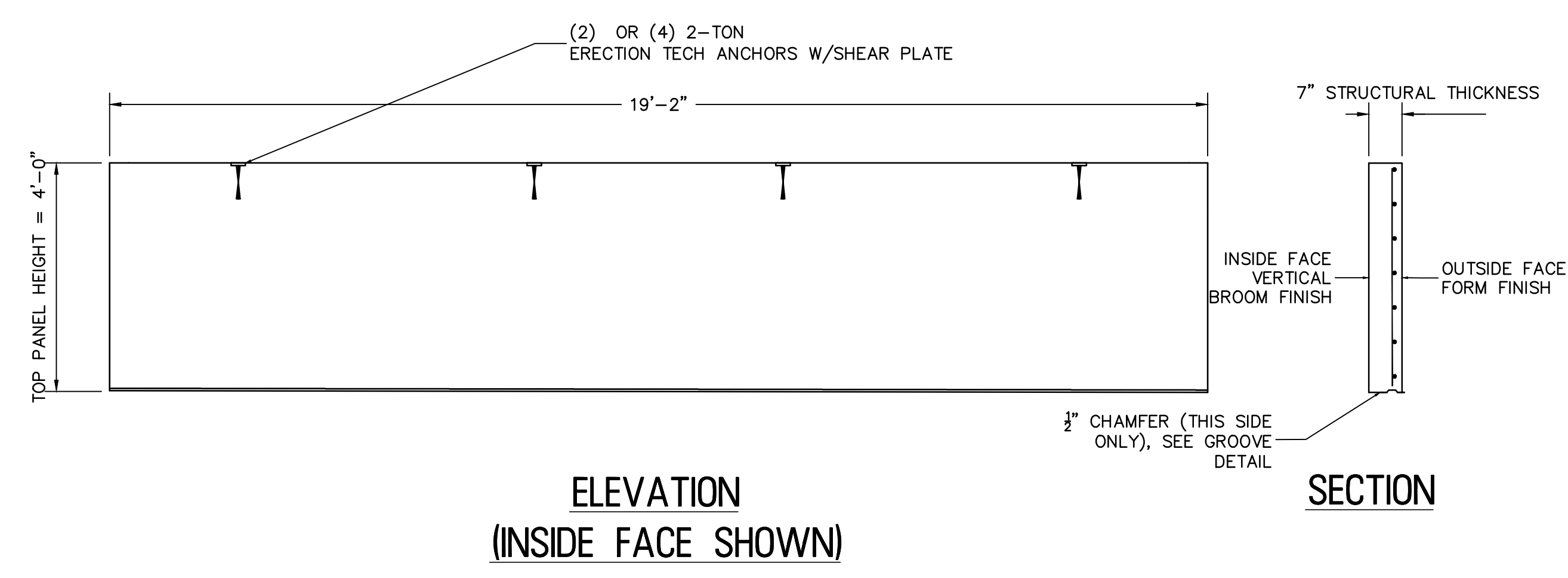
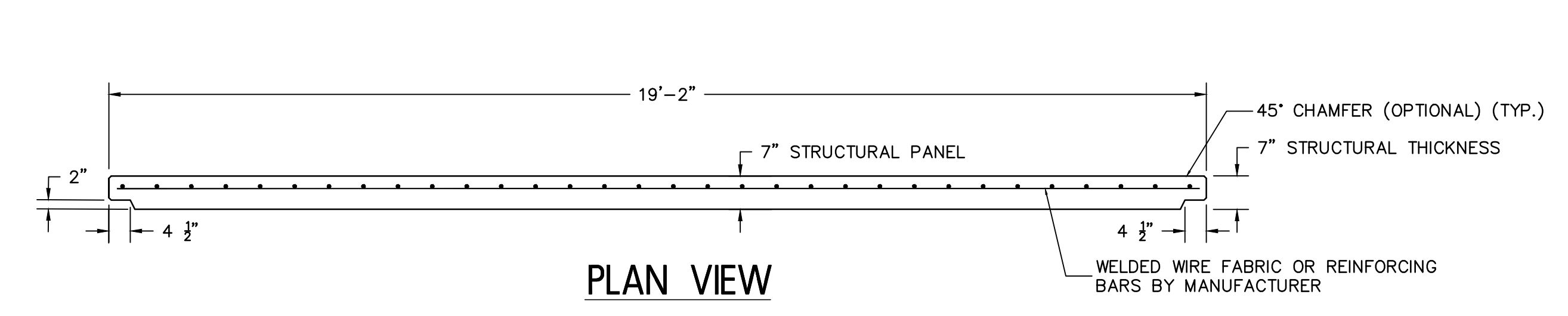
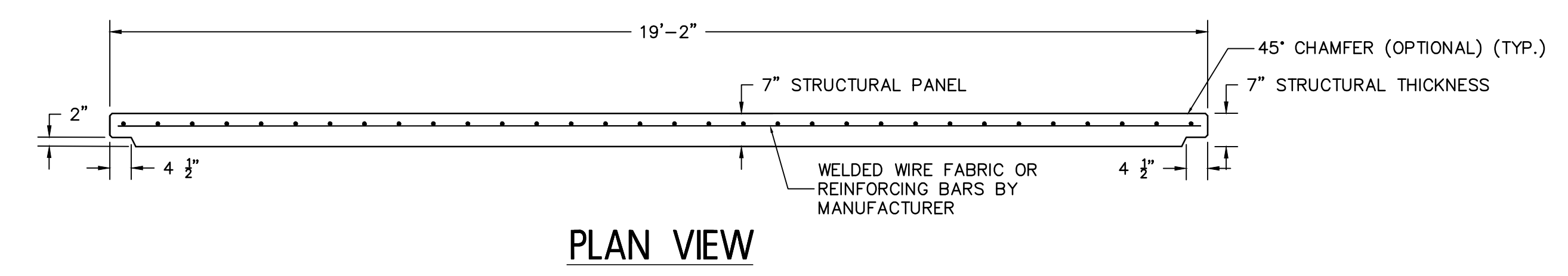
CONSTRUCTION PLAN
SCALE: 1" = 30'



C-2



- EXTENSION ARM NOTES:
1. BASE PLATE TO BE A36 STEEL.
 2. BRACKET TO BE HOT DIPPED GALVANIZED.
 3. 3/8" Ø x 3" HILTI KWIK BOLT ANCHOR OR APPROVED EQUAL.
 4. BRACKET TO BE MOUNTED ON TOP OF WALL PANEL.
 5. BRACKET SPACING TO BE A MAXIMUM OF 10 FEET.



REMINGTON & VERNICK ENGINEERS
2059 SPRINGDALE ROAD
CHERRY HILL, NJ 08003
(856) 795-9595, FAX (856) 795-1882
WEB SITE ADDRESS : WWW.RVE.COM
Certification of Authorization: 24 CA 28003300
~ENGINEERING EXCELLENCE~

DATE: 06/03/2022
KIM C. WESTEN
NJ PROFESSIONAL ENGINEER LIC. No. 47013

PLANS WHICH DO NOT BEAR AN EMBOSSED SEAL ARE NOT VALID.

ALL DOCUMENTS PREPARED BY REMINGTON & VERNICK ENGINEERS AND AFFILIATES ARE INSTRUMENTS OF SERVICE IN RESPECT OF THE PROJECT. THEY ARE NOT INTENDED OR REPRESENTED TO BE SUITABLE FOR REUSE BY OWNER OR OTHERS ON EXTENSIONS OF THE PROJECT OR ON ANY OTHER PROJECT. ANY REUSE WITHOUT WRITTEN VERIFICATION OR ADAPTATION BY REMINGTON & VERNICK ENGINEERS AND AFFILIATES FOR THE SPECIFIC PURPOSE INTENDED WILL BE AT OWNERS SOLE RISK AND WITHOUT LIABILITY OR LEGAL EXPOSURE TO REMINGTON & VERNICK ENGINEERS AND AFFILIATES. AND OWNER SHALL INDEMNIFY AND HOLD HARMLESS REMINGTON & VERNICK ENGINEERS AND AFFILIATES FROM ALL CLAIMS, DAMAGES, LOSSES AND EXPENSES ARISING OUT OF OR RESULTING THEREFROM.

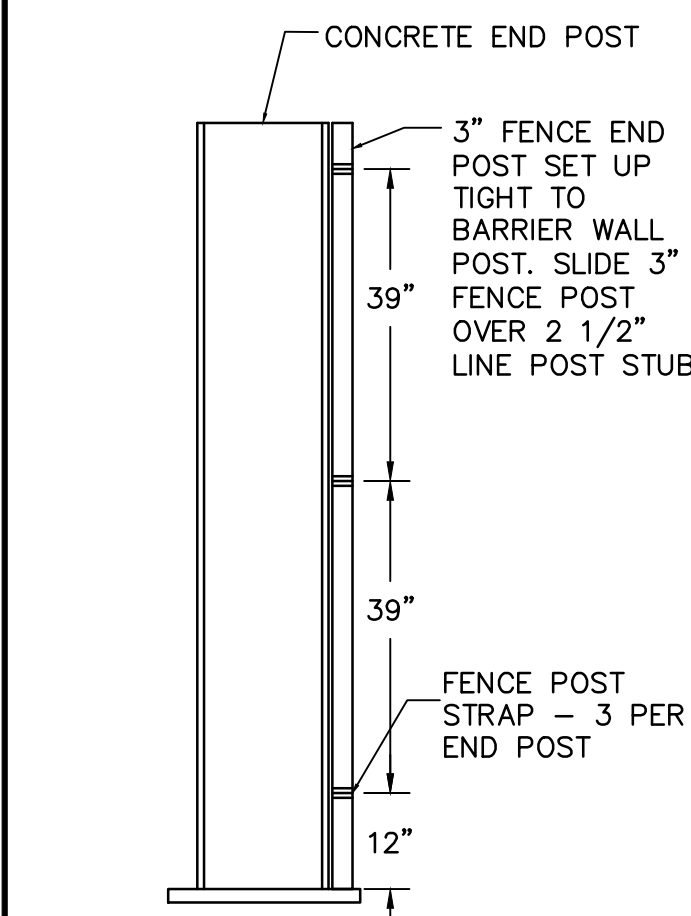
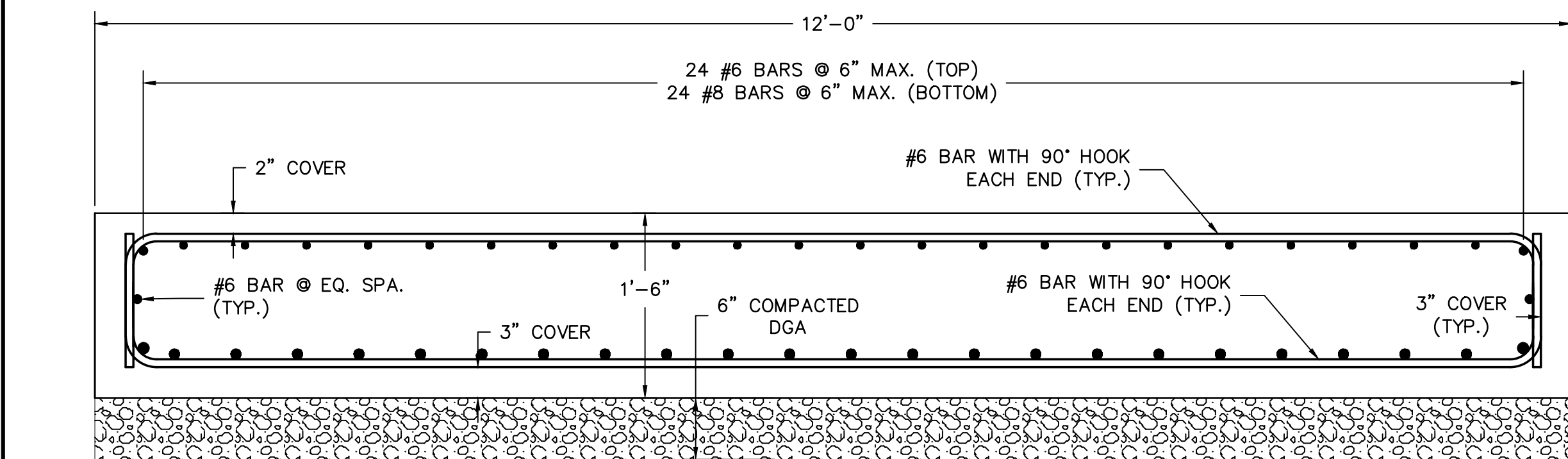
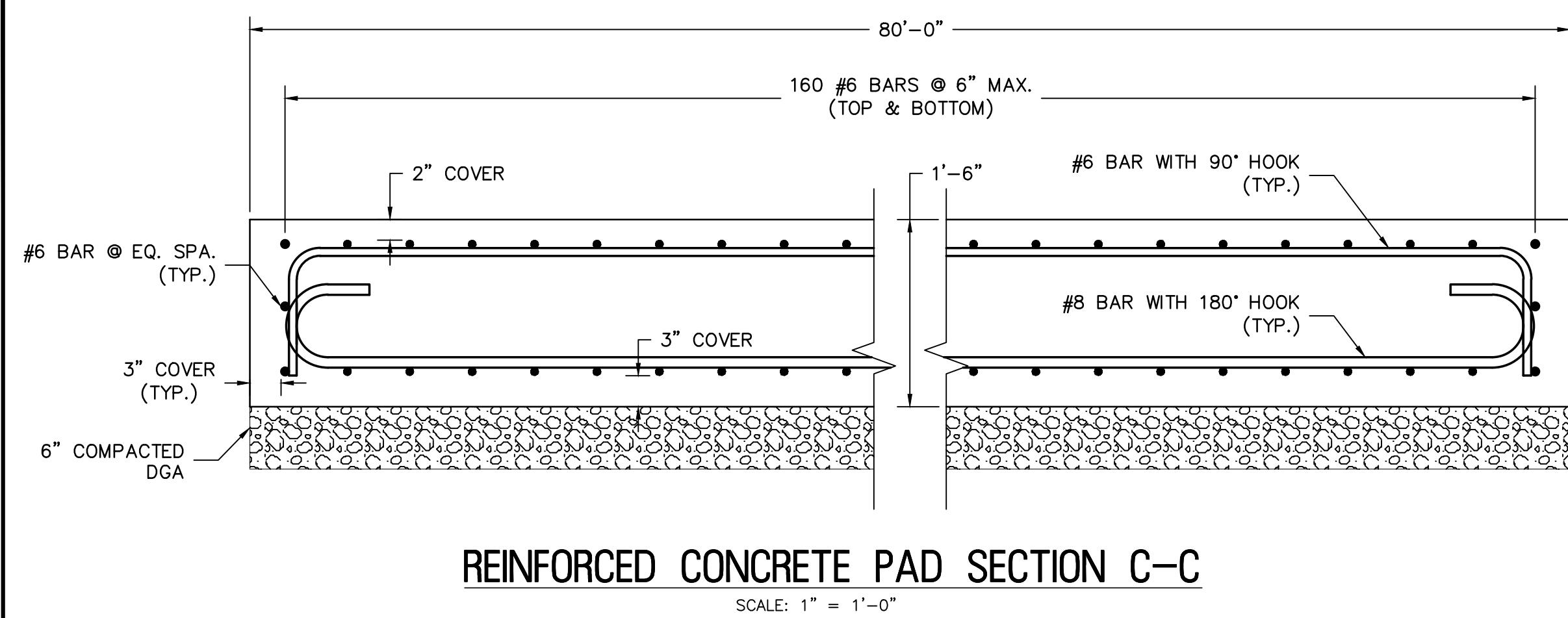
| NO. | REVISION | DATE | BY/CHK |
|-----|----------|------|--------|
| | | | |
| | | | |
| | | | |
| | | | |
| | | | |
| | | | |
| | | | |
| | | | |
| | | | |
| | | | |

BARRIER WALL PANELS AND POSTS

SOUTH JERSEY PORT CORPORATION
SECURITY PERIMETER BARRIER WALL
BALZANO MARINE TERMINAL
CITY OF CAMDEN CAMDEN COUNTY NEW JERSEY

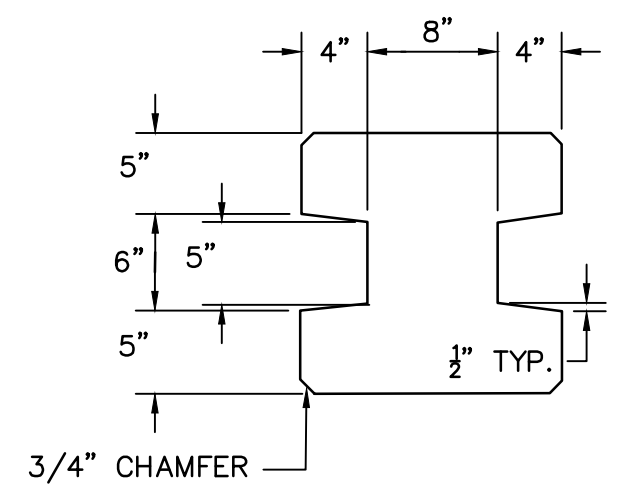
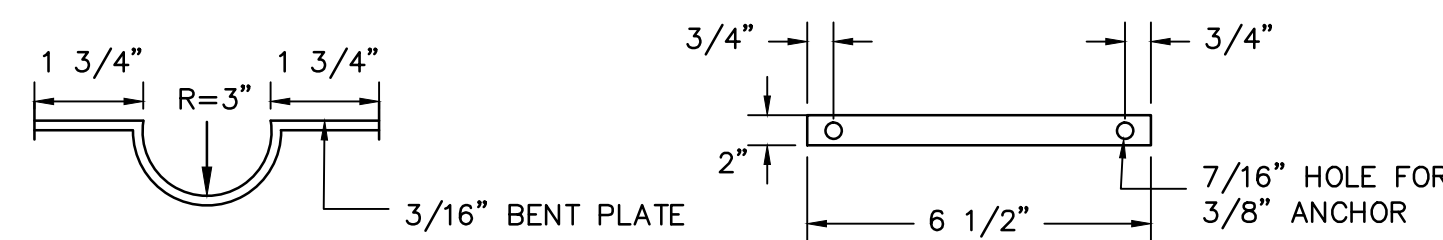
| DRAWN BY: | DESIGN BY: | CHECKED BY: | SCALE: |
|-----------|------------|-------------|----------|
| CFC | KCW | DMS | AS NOTED |
| DATE: | 2/23/2022 | | |
| JOB No.: | 3965X001 | | |
| 7 | | of 9 | |

D-1
D-2

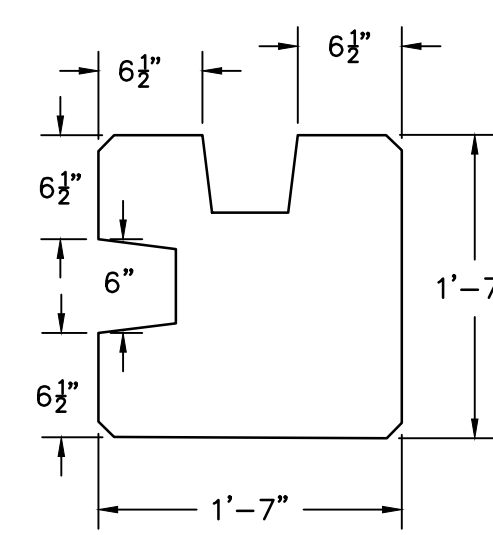


NOTES:

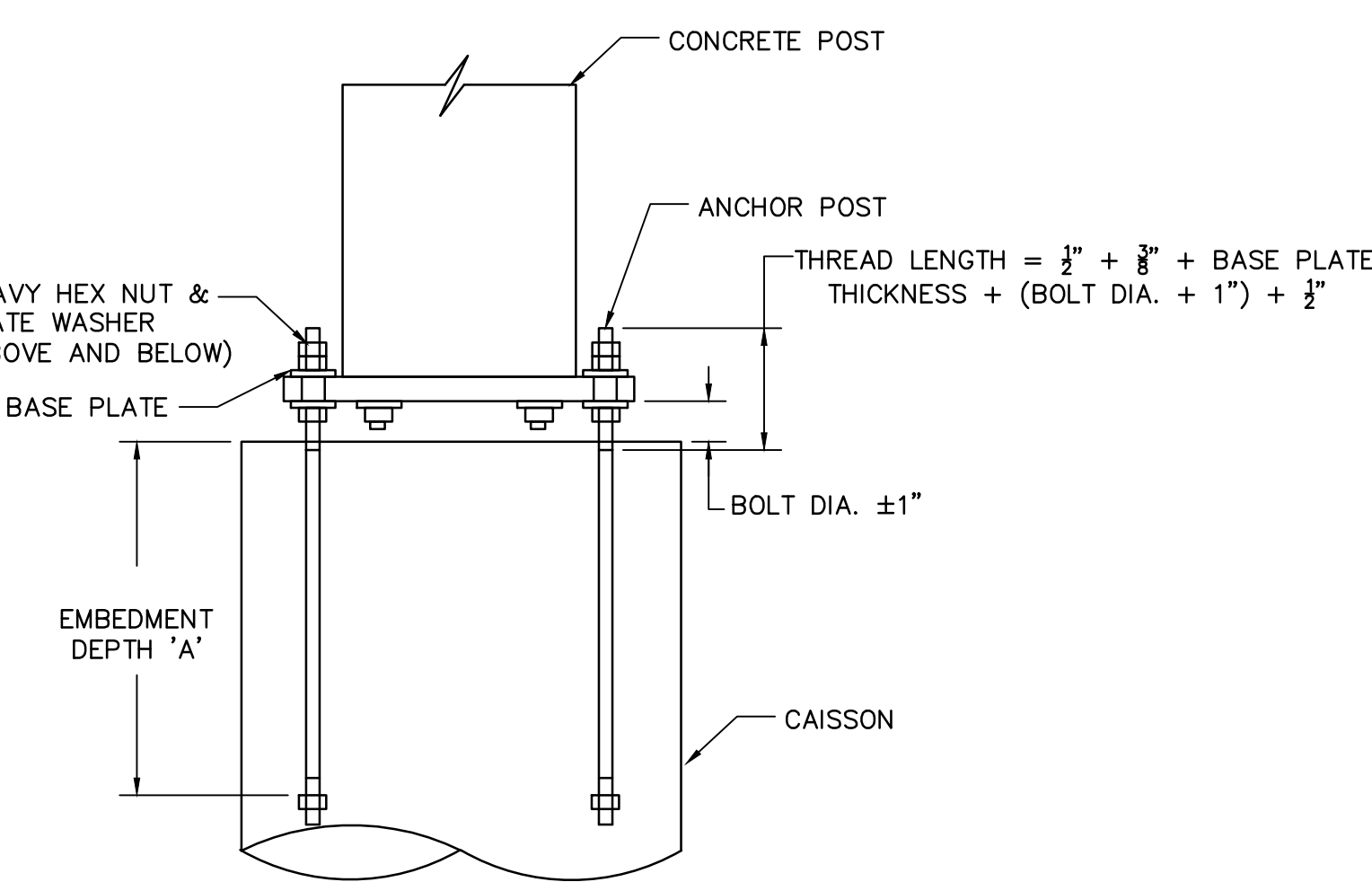
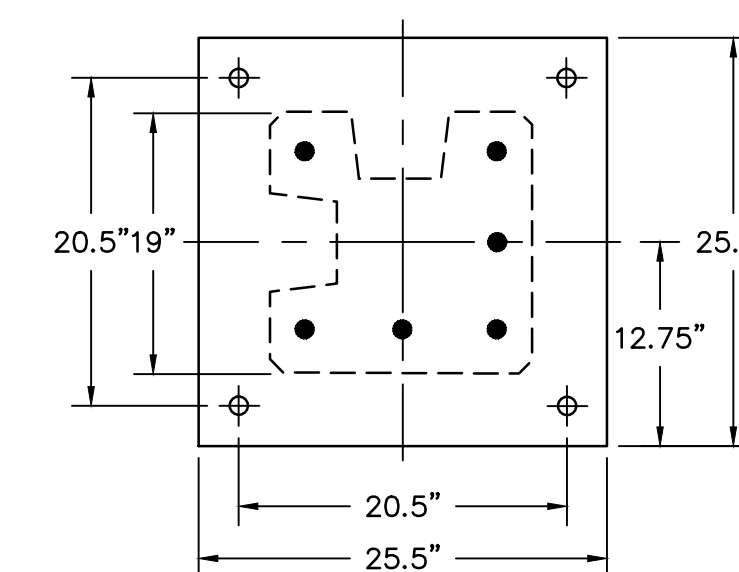
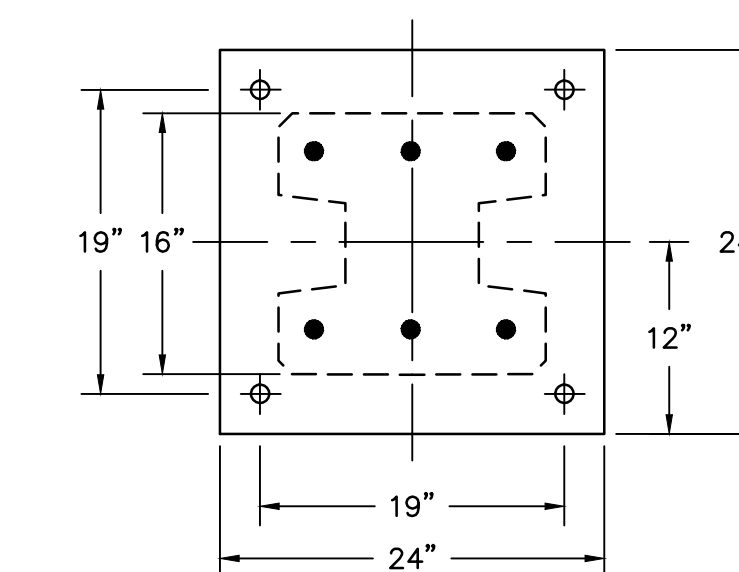
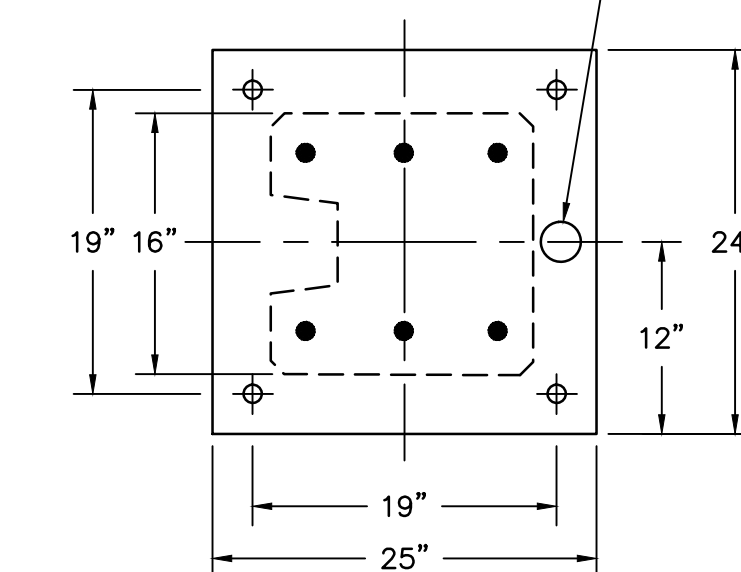
- STRAP TO BE A36 STEEL HOT DIPPED GALVANIZED.
- PLACE 3" END POST OVER 2 1/2" LINE POST STUB.
- BOLT METAL STRAPS TO CONCRETE POST USING 3/8" HILTI KWIK BOLT OR EQUAL. EMBEDDED A MINIMUM OF 1 1/2" INTO POST.



IN-LINE POST REINFORCEMENT
SCALE: 1" = 1'-0"



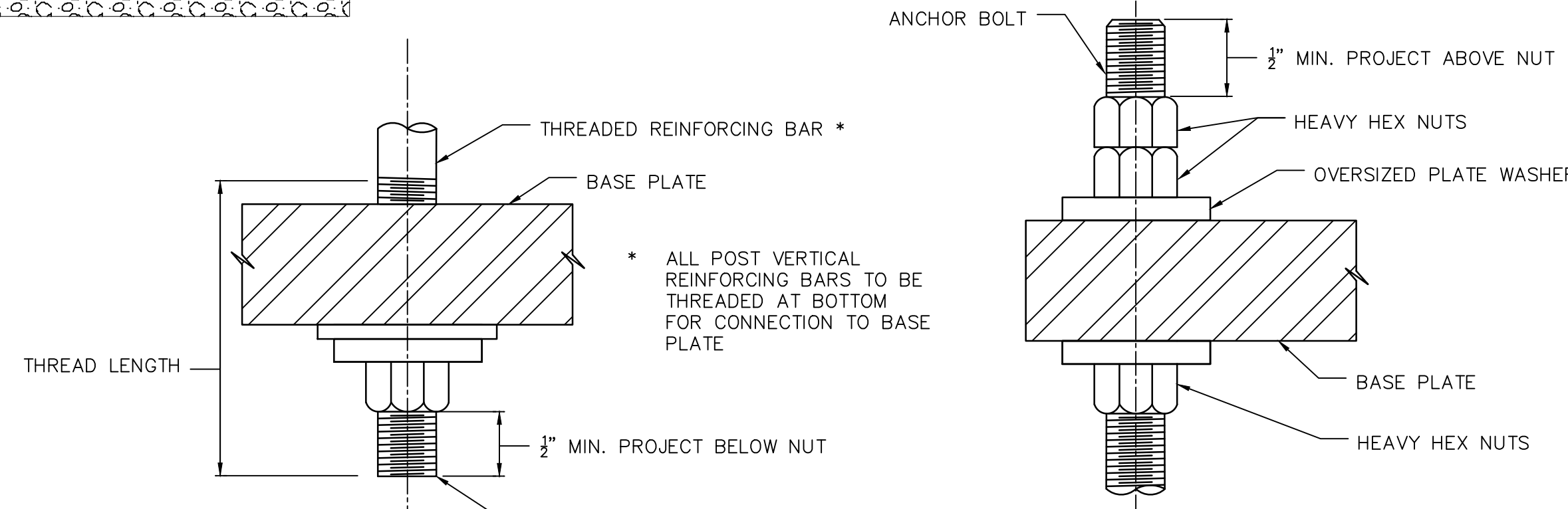
CORNER POST REINFORCEMENT
SCALE: 1" = 1'-0"



ANCHOR BOLT DETAIL
DRILLED PIER REINFORCEMENT NOT SHOWN
SCALE: 1" = 1'-0"

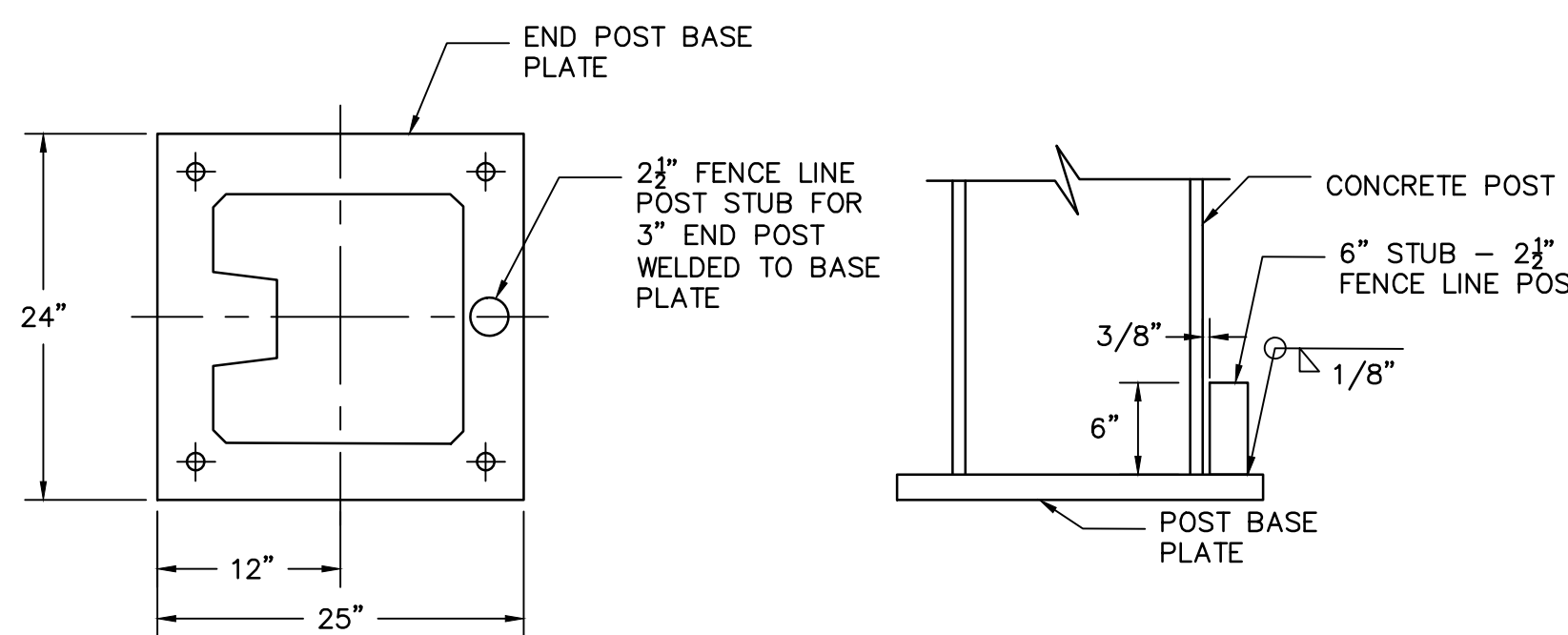
NOTES:

- CHAMFER VERTICAL EDGES OF POSTS 3/4" x 3/4" TYP.
- BASEPLATES SHALL CONFORM TO ASTM A709, GRADE 50W.
- ANCHOR BOLTS SHALL CONFORM TO ASTM F1554, GRADE 105.
- WASHERS SHALL CONFORM TO ASTM F436.
- HEX NUTS SHALL CONFORM TO ASTM A563.
- EMBEDMENT DEPTH 'A' TO BE DETERMINED BY CONTRACTOR'S ENGINEER.

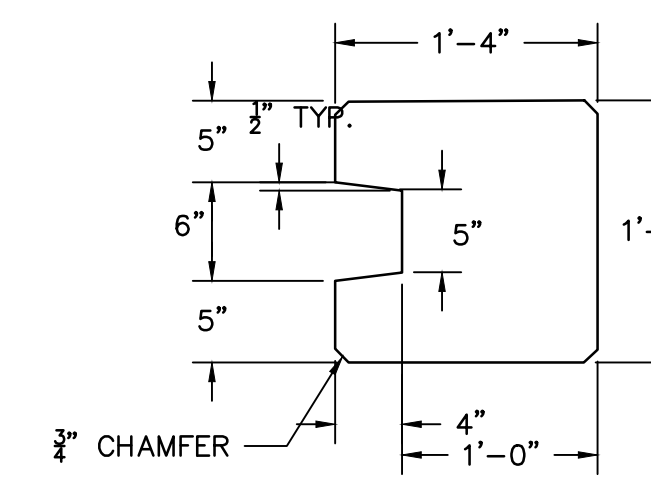


DETAIL "A"
SCALE: N.T.S.

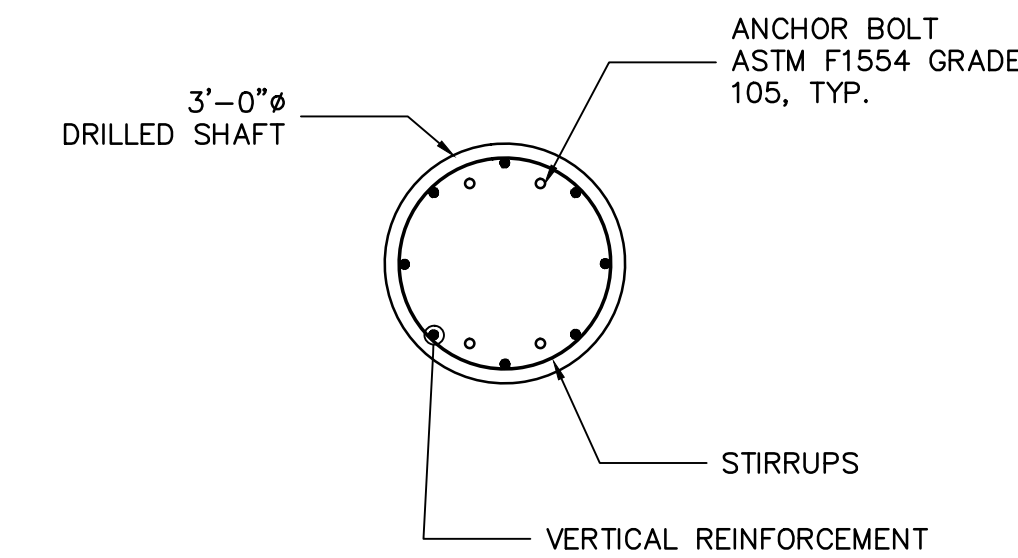
DETAIL "B"
SCALE: N.T.S.



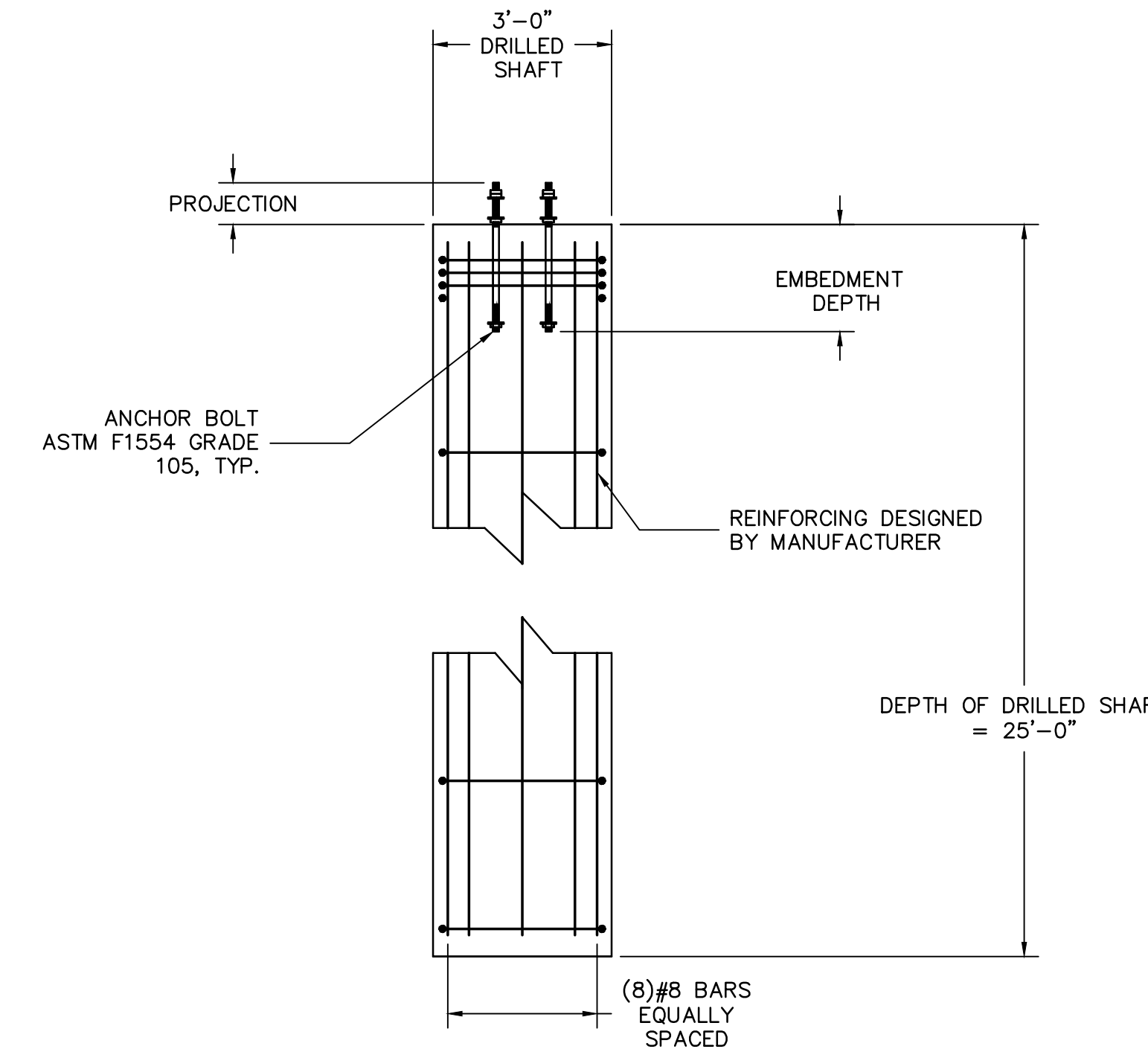
DETAIL 'C' - END FENCE POST ATTACHMENT TO CONCRETE POST
SCALE: 1" = 1'-0"



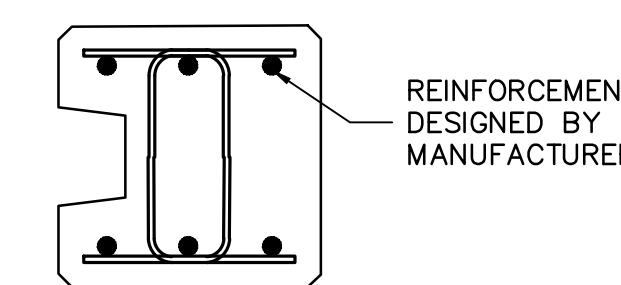
TYPICAL END POST
SCALE: 1" = 1'-0"



DRILLED PIER PLAN
SCALE: N.T.S.



DRILLED PIER ELEVATION
SCALE: N.T.S.



END POST REINFORCEMENT
SCALE: 1" = 1'-0"

RVE
1901
REMINGTON & VERNICK ENGINEERS
2059 SPRINGDALE ROAD
CHERRY HILL, NJ 08003
(856) 795-9595, FAX (856) 795-1882
WEB SITE ADDRESS : WWW.RVE.COM
Certification of Authorization: 24 CA 28003300
-ENGINEERING EXCELLENCE-

DATE: 06/03/2022
KIM C. WESTEN
NJ PROFESSIONAL ENGINEER LIC. No. 47013

PLANS WHICH DO NOT BEAR AN EMBOSSED SEAL ARE NOT VALID.

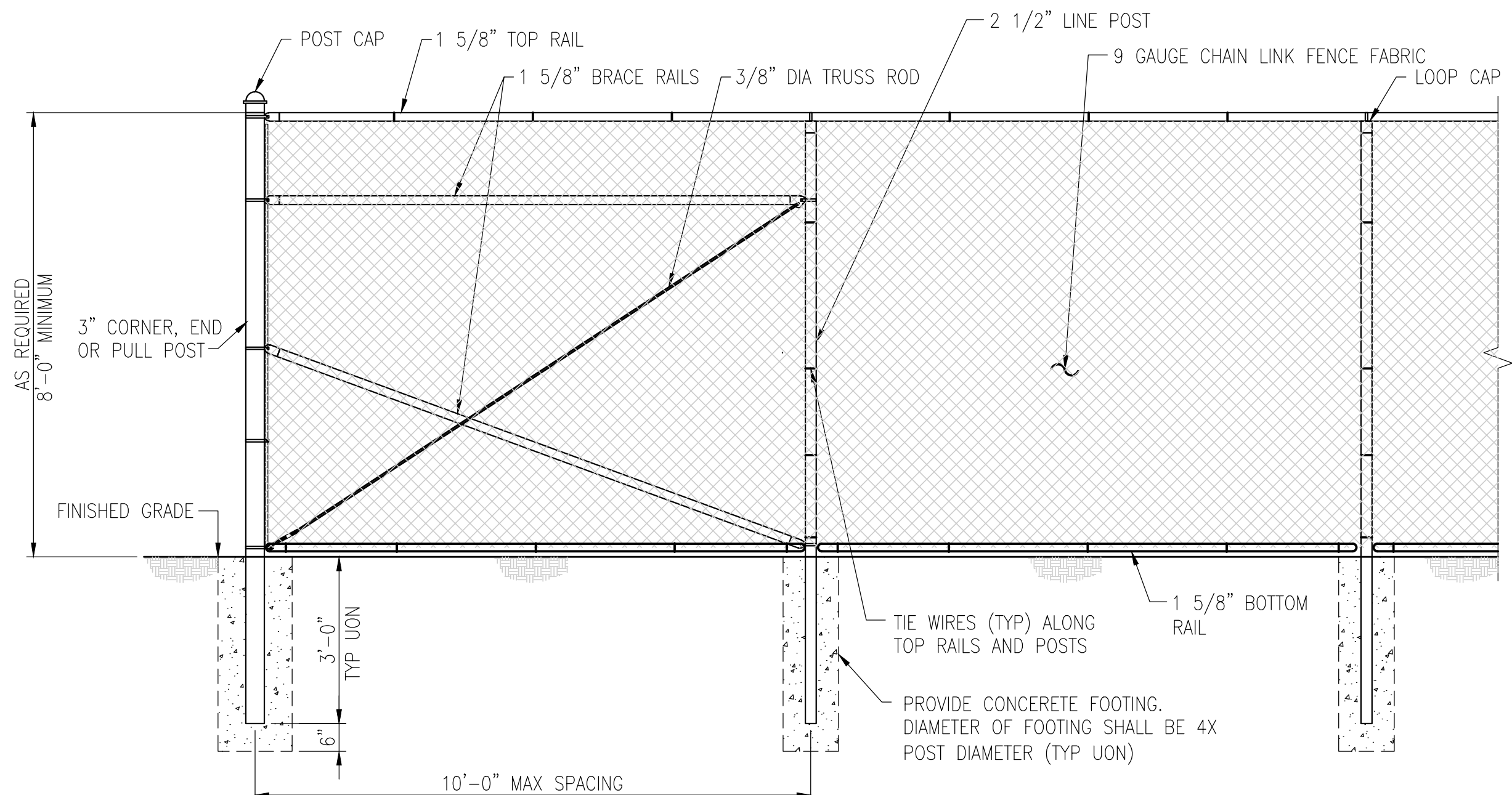
ALL DOCUMENTS PREPARED BY REMINGTON & VERNICK ENGINEERS AND AFFILIATES ARE INSTRUMENTS OF SERVICE IN RESPECT OF THE PROJECT. THEY ARE NOT INTENDED OR REPRESENTED TO BE SUITABLE FOR REUSE BY OWNER OR OTHERS ON EXTENSIONS OF THE PROJECT OR ON ANY OTHER PROJECT. ANY REUSE WITHOUT WRITTEN VERIFICATION OR ADAPTATION BY REMINGTON & VERNICK ENGINEERS AND AFFILIATES FOR THE SPECIFIC PURPOSE INTENDED WILL BE AT OWNERS SOLE RISK AND WITHOUT LIABILITY OR LEGAL EXPOSURE TO REMINGTON & VERNICK ENGINEERS AND AFFILIATES. AND OWNER SHALL INDEMNIFY AND HOLD HARMLESS REMINGTON & VERNICK ENGINEERS AND AFFILIATES FROM ALL CLAIMS, DAMAGES, LOSSES AND EXPENSES ARISING OUT OF OR RESULTING THEREFROM.

| NO. | REVISION | DATE | BY | CHK |
|-----|----------|------|----|-----|
| | | | | |
| | | | | |
| | | | | |
| | | | | |
| | | | | |
| | | | | |
| | | | | |
| | | | | |
| | | | | |
| | | | | |

DRILLED PIER, POSTS AND GENERAL DETAILS
SOUTH JERSEY PORT CORPORATION
SECURITY PERIMETER BARRIER WALL
BALZANO MARINE TERMINAL
NEW JERSEY
CITY OF CAMDEN
CAMDEN COUNTY

| DRAWN BY: | DESIGN BY: | CHECKED BY: | SCALE: |
|------------|------------|-------------|----------|
| CFC | KCW | DMS | AS NOTED |
| DATE: | 2/23/2022 | | |
| JOB NO.: | 3965X001 | | |
| SHEET NO.: | 8 | OF | 9 |

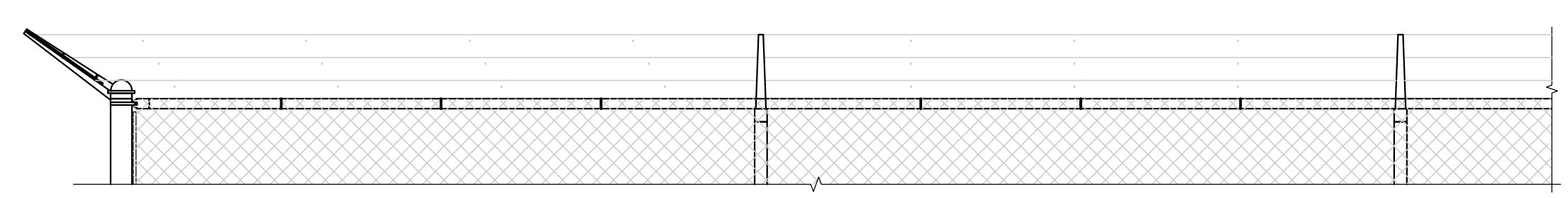
D-2
D-2



TYPICAL FENCE AND CORNER PANEL ELEVATION

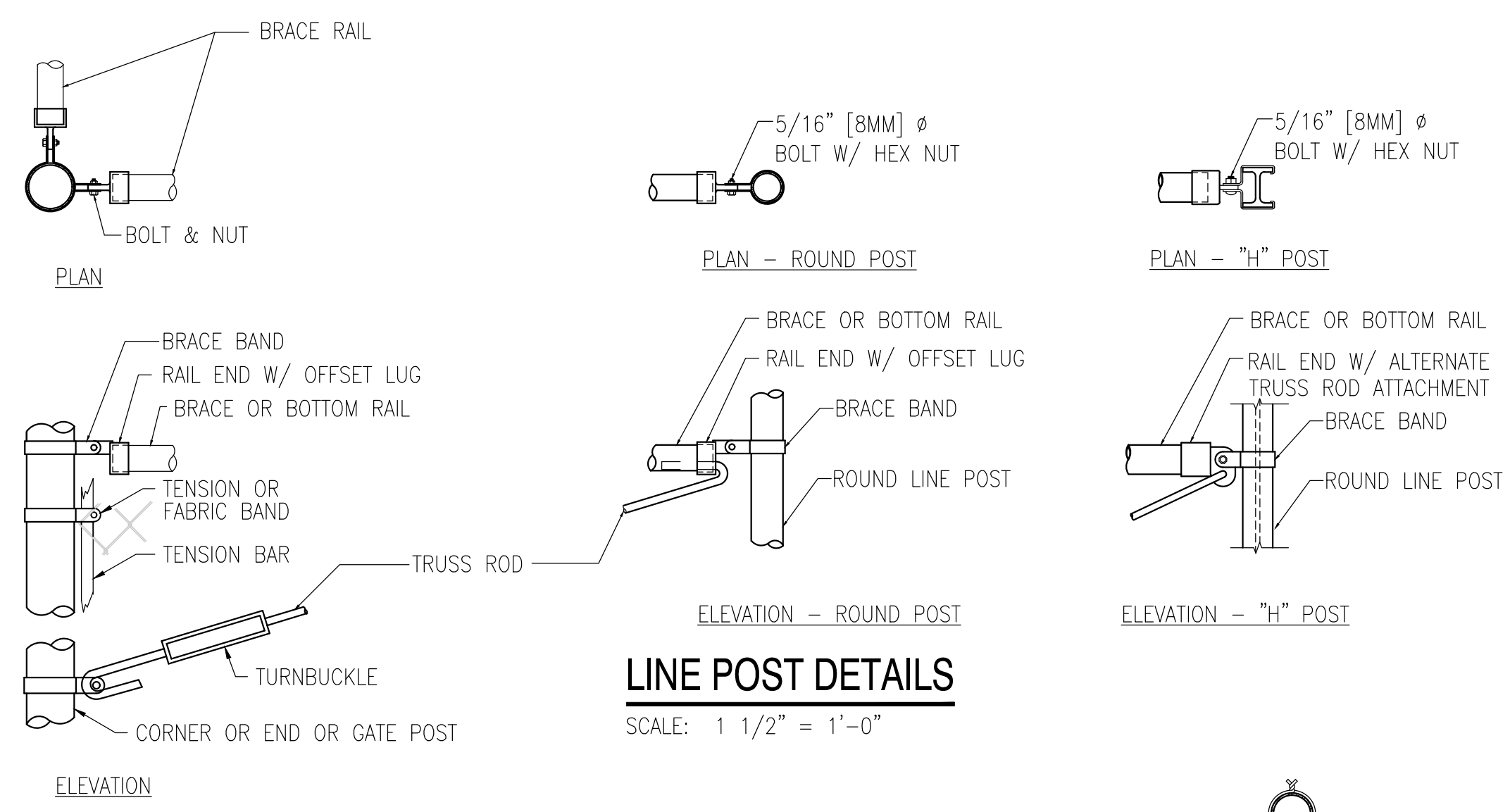
SCALE: 1" = 1'-0"

NOTE (1): A BOTTOM RAIL SHALL BE INSTALLED APPROXIMATELY 3" ABOVE GRADE (A MINIMUM OF 2" AND A MAXIMUM OF 4"). HARDWARE SHALL BE WELDED OR SHOT NAILED TO POSTS AND RAILS IN ORDER TO SECURE IN PLACE. ATTACH FABRIC TO NEW BOTTOM RAIL TO ELIMINATE POSSIBILITY OF PEELING UP FABRIC.



TYPICAL 3 STRAND BARBED WIRE AND SINGLE EXTENSION ARM CONFIGURATION

SCALE: 1" = 1'-0"

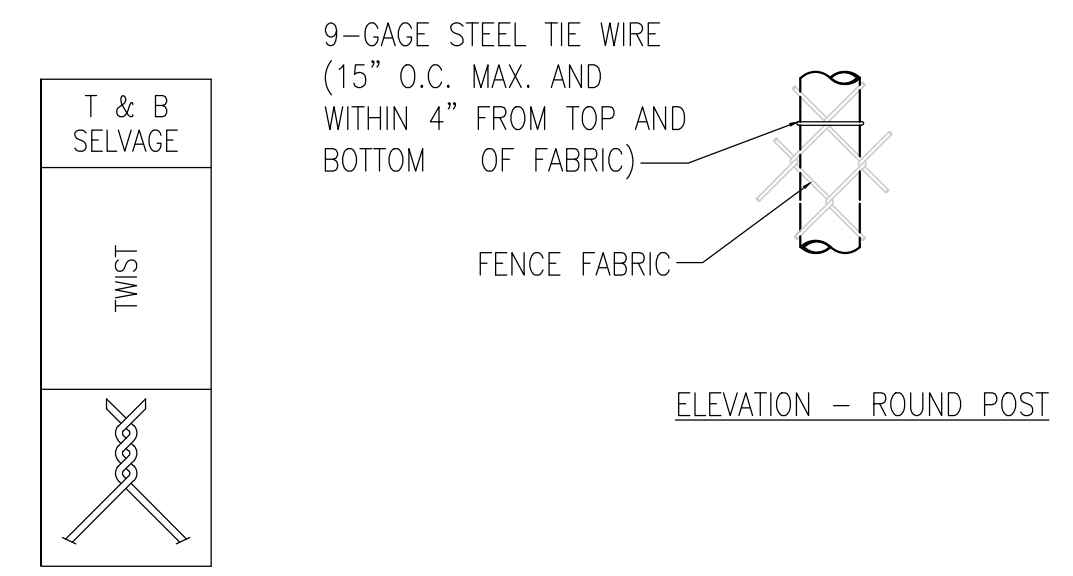


LINE POST DETAILS

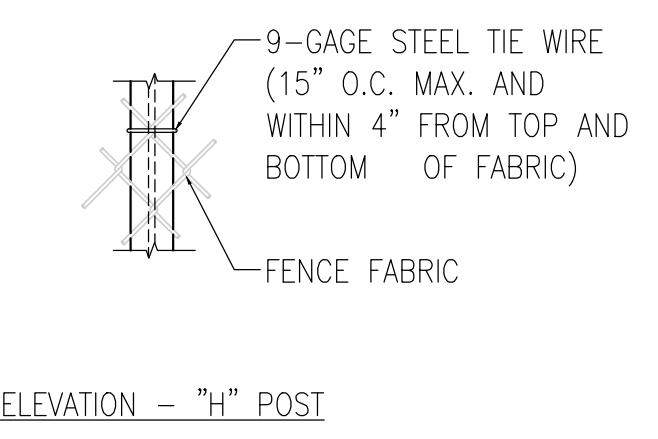
SCALE: 1 1/2" = 1'-0"

CORNER OR END POSTS

SCALE: 1 1/2" = 1'-0"



FITTINGS NOTES
 1. METRIC DIMENSIONS ARE NOMINAL EQUIVALENTS TO U.S. DIMENSIONS.
 2. ALL FITTINGS MATERIAL SHALL BE AS SPECIFIED.

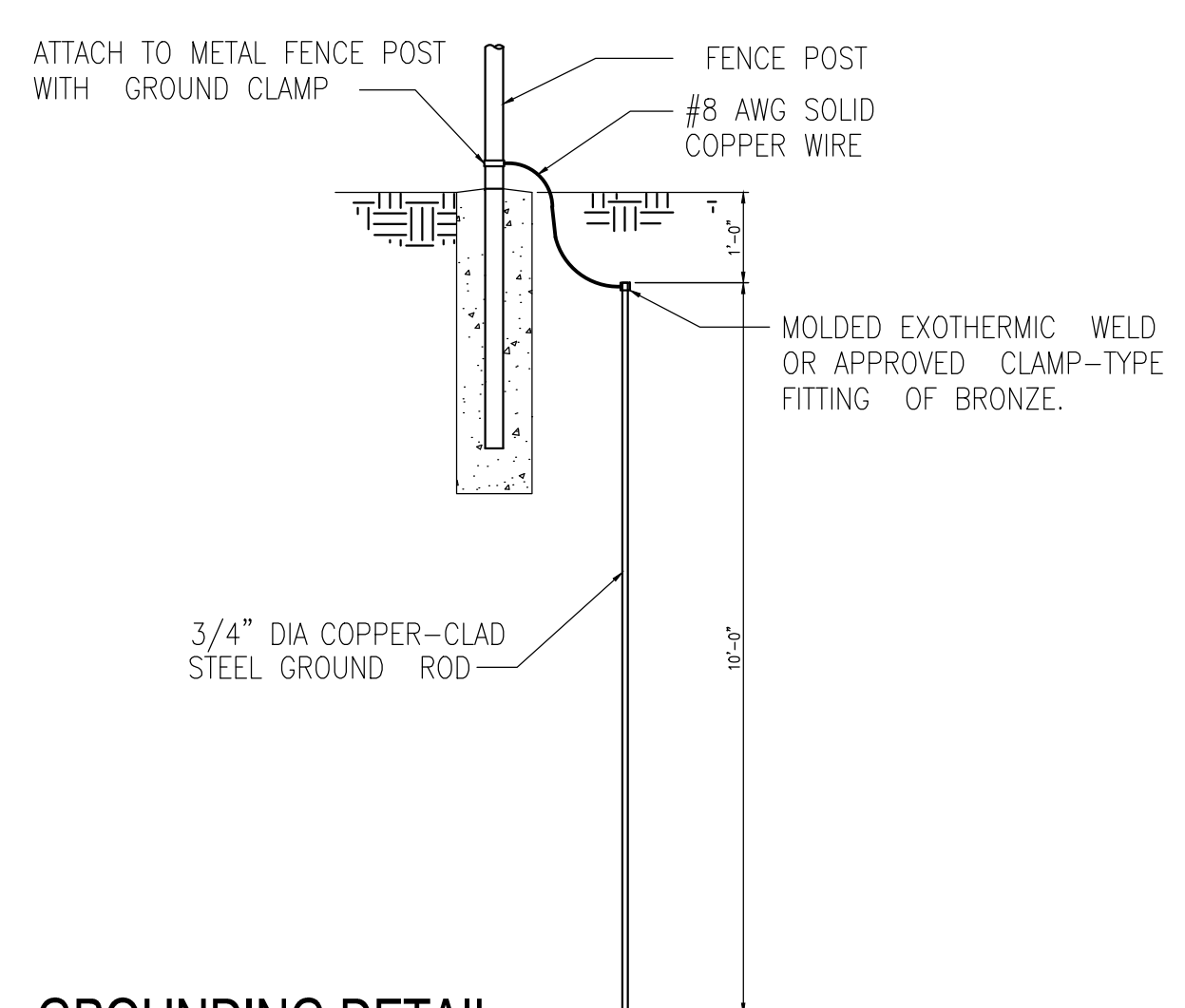


ELEVATION - "H" POST

CHAIN-LINK FENCE AND DETAILS

TYPICAL FENCE AND BRACED PANEL ELEVATION

SCALE: 1" = 1'-0"

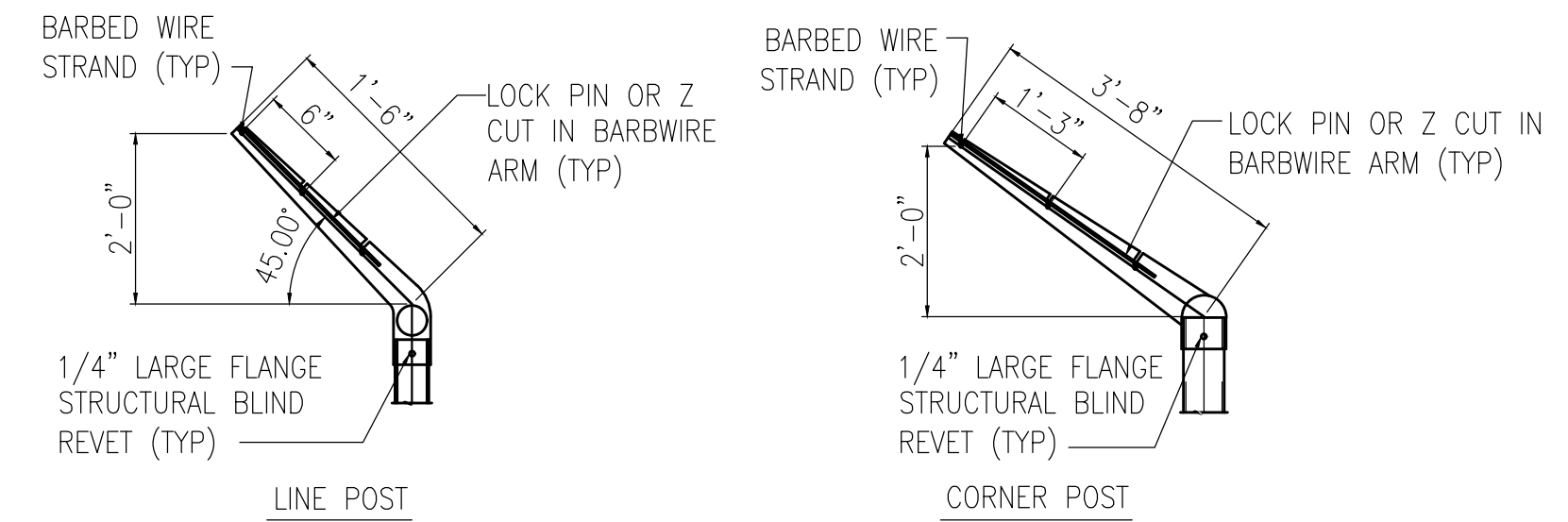
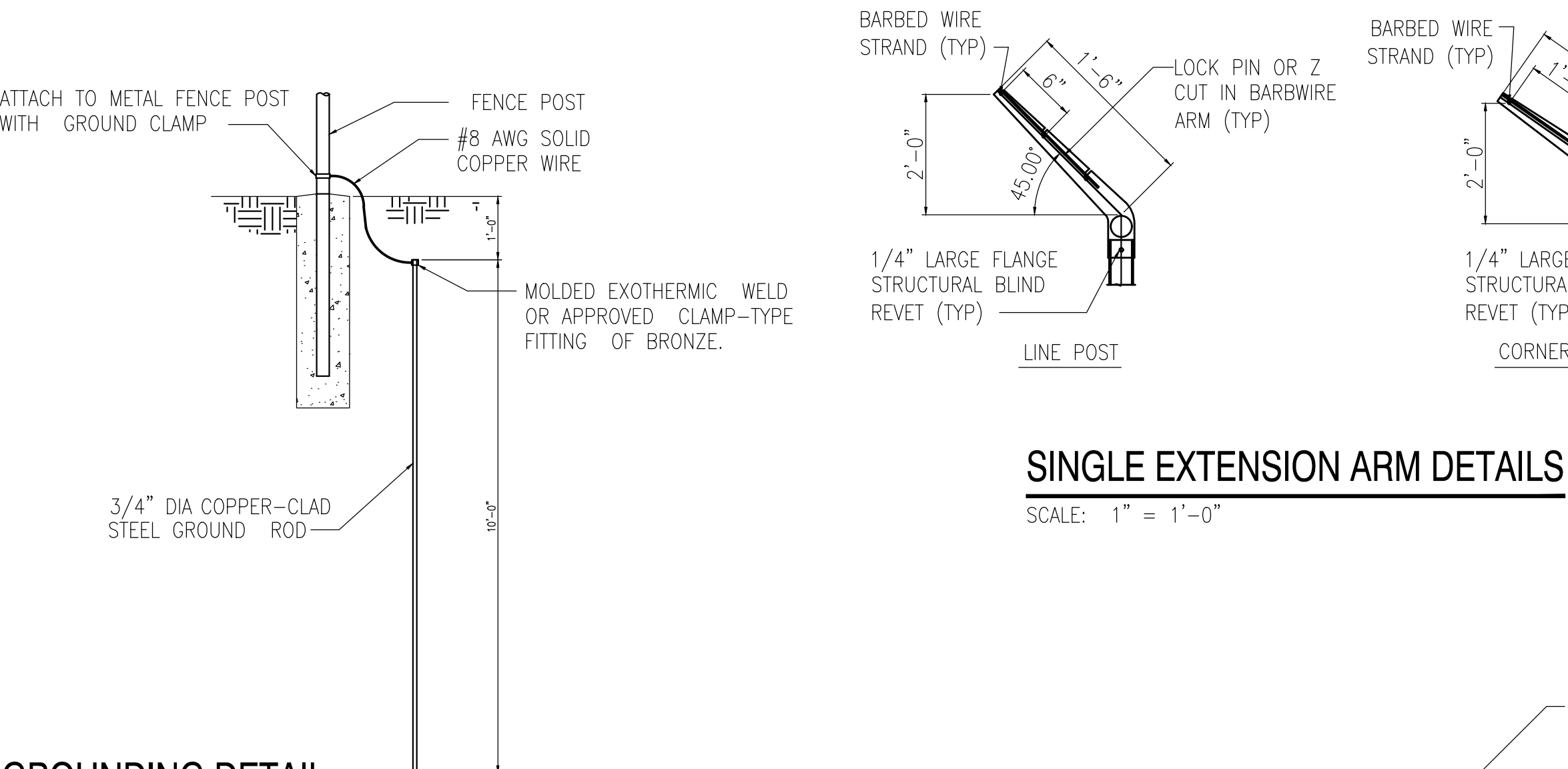


GROUNDING DETAIL

NO SCALE

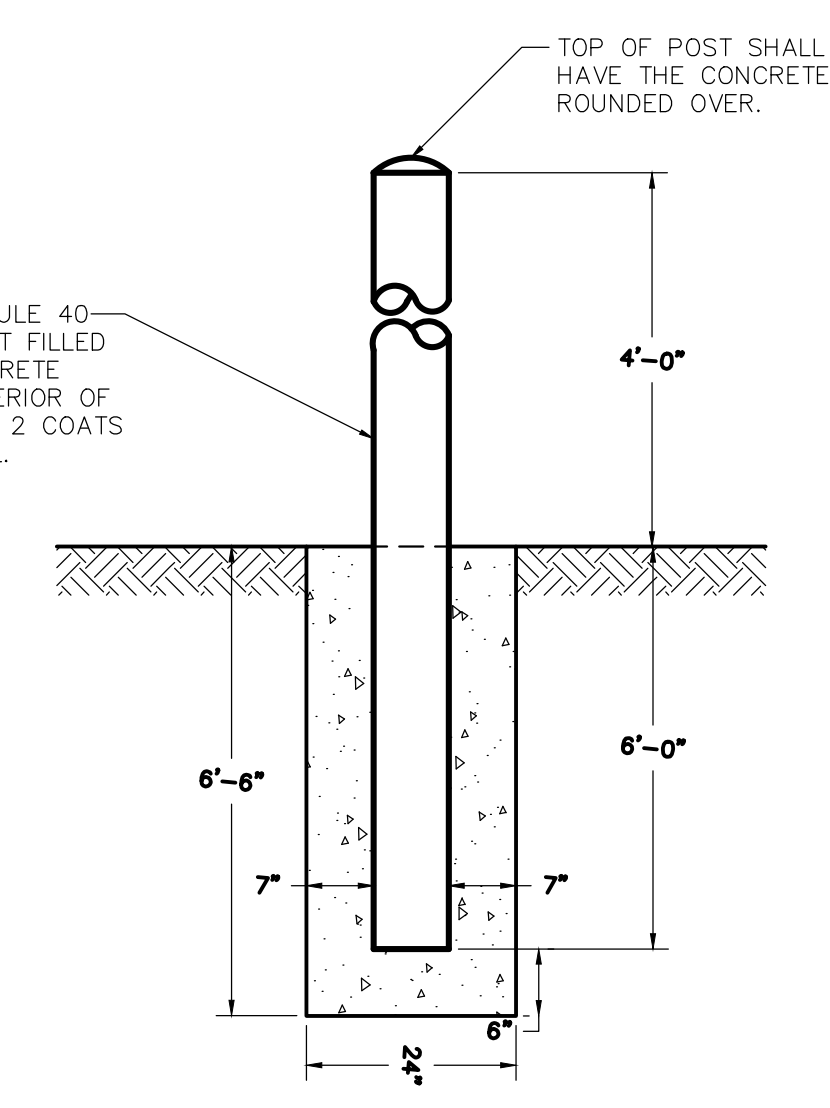
TYPICAL FENCE AND BRACED PANEL ELEVATION

SCALE: 1" = 1'-0"



SINGLE EXTENSION ARM DETAILS

SCALE: 1" = 1'-0"



BOLLARD DETAIL

SCALE: N.T.S.

- BOLLARD NOTES:**
1. CONCRETE TO BE NJDOT CLASS 'B'.
 2. PAINT BOLLARDS YELLOW.

GRAPHIC SCALES

| | | | | |
|----------------|---|----|----|-------|
| 1" = 1'-0" | 0 | 6" | 1' | 2' |
| 1 1/2" = 1'-0" | 0 | 4" | 8" | 1'-4" |

CD-1

RVE
 1901
REMINGTON & VERNICK ENGINEERS
 2059 SPRINGDALE ROAD
 CHERRY HILL, NJ 08003
 (856) 795-9595, FAX (856) 795-1882
 WEB SITE ADDRESS : WWW.RVE.COM
 Certification of Authorization: 24 CA 28003300
 ~ENGINEERING EXCELLENCE~

DATE: 06/03/2022
KIM C. WESTEN
 NJ PROFESSIONAL ENGINEER LIC. No. 47013

PLANS WHICH DO NOT BEAR AN EMBOSSED SEAL ARE NOT VALID.
 ALL DOCUMENTS PREPARED BY REMINGTON & VERNICK ENGINEERS AND AFFILIATES ARE INSTRUMENTS OF SERVICE IN RESPECT OF THE PROJECT. THEY ARE NOT INTENDED OR REPRESENTED TO BE SUITABLE FOR REUSE BY OWNER OR OTHERS ON EXTENSIONS OF THE PROJECT OR ON ANY OTHER PROJECT. ANY REUSE WITHOUT WRITTEN VERIFICATION OR ADAPTATION BY REMINGTON & VERNICK ENGINEERS AND AFFILIATES FOR THE SPECIFIC PURPOSE INTENDED WILL BE AT OWNERS SOLE RISK AND WITHOUT LIABILITY OR LEGAL EXPOSURE TO REMINGTON & VERNICK ENGINEERS AND AFFILIATES, AND OWNER SHALL INDEMNIFY AND HOLD HARMLESS REMINGTON & VERNICK ENGINEERS AND AFFILIATES FROM ALL CLAIMS, DAMAGES, LOSSES AND EXPENSES ARISING OUT OF OR RESULTING THEREFROM.

| NO. | REVISION | DATE | BY |
|-----|----------|------|----|
| | | | |
| | | | |
| | | | |
| | | | |

CHAIN-LINK FENCE DETAILS
 SOUTH JERSEY PORT CORPORATION
 SECURITY PERIMETER BARRIER WALL
 BALZANO MARINE TERMINAL
 CAMDEN COUNTY, NEW JERSEY
 CITY OF CAMDEN

| | | | |
|-----------|------------|-------------|----------|
| DRAWN BY: | DESIGN BY: | CHECKED BY: | SCALE: |
| CFC | KCW | DMS | AS NOTED |
| DATE: | SHEET NO.: | | |
| 2/23/2022 | 9 of 9 | | |
| JOB No.: | | | |
| 3965X001 | | | |