

Addendum 1
July 11, 2023
South Jersey Port Corporation (SJPC)
Request for Proposals

SJPC-23-22 Broadway Terminal Solar PV Systems Project

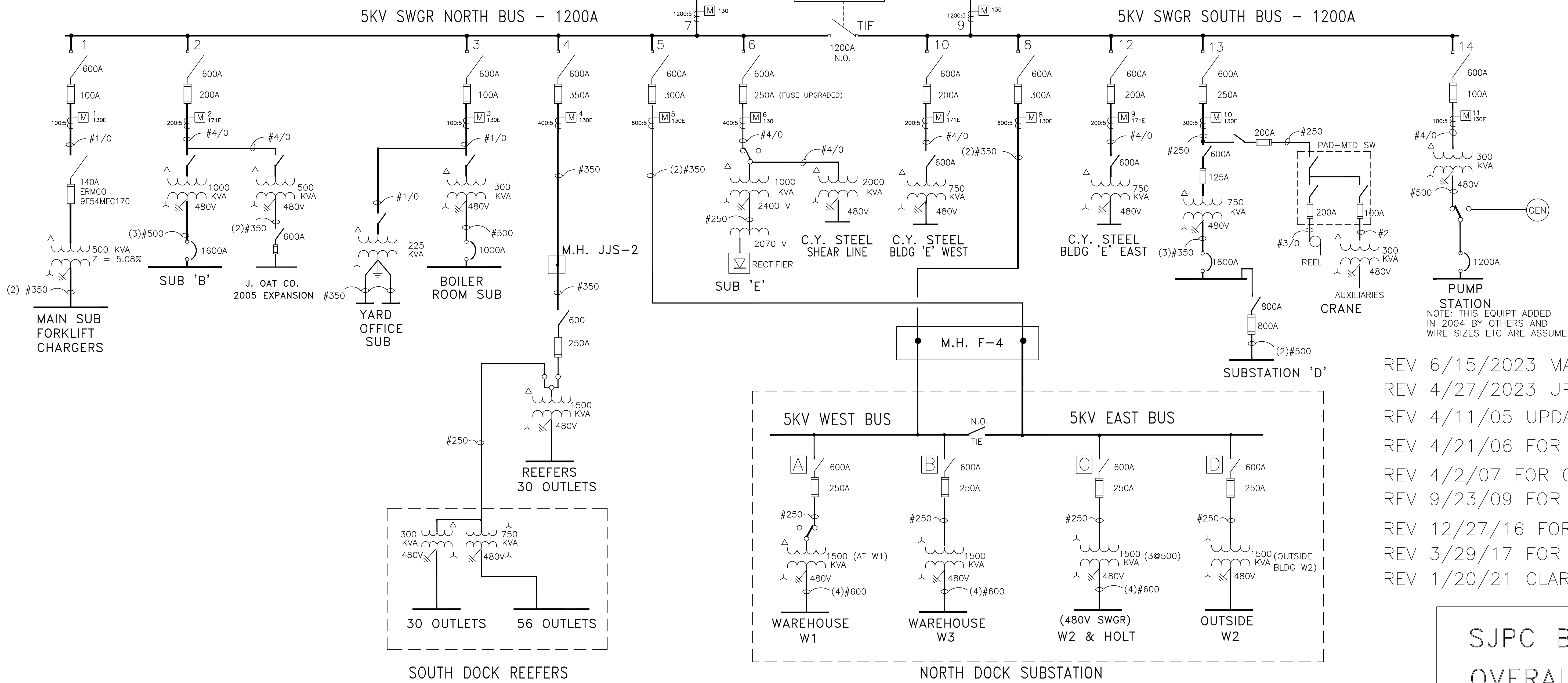
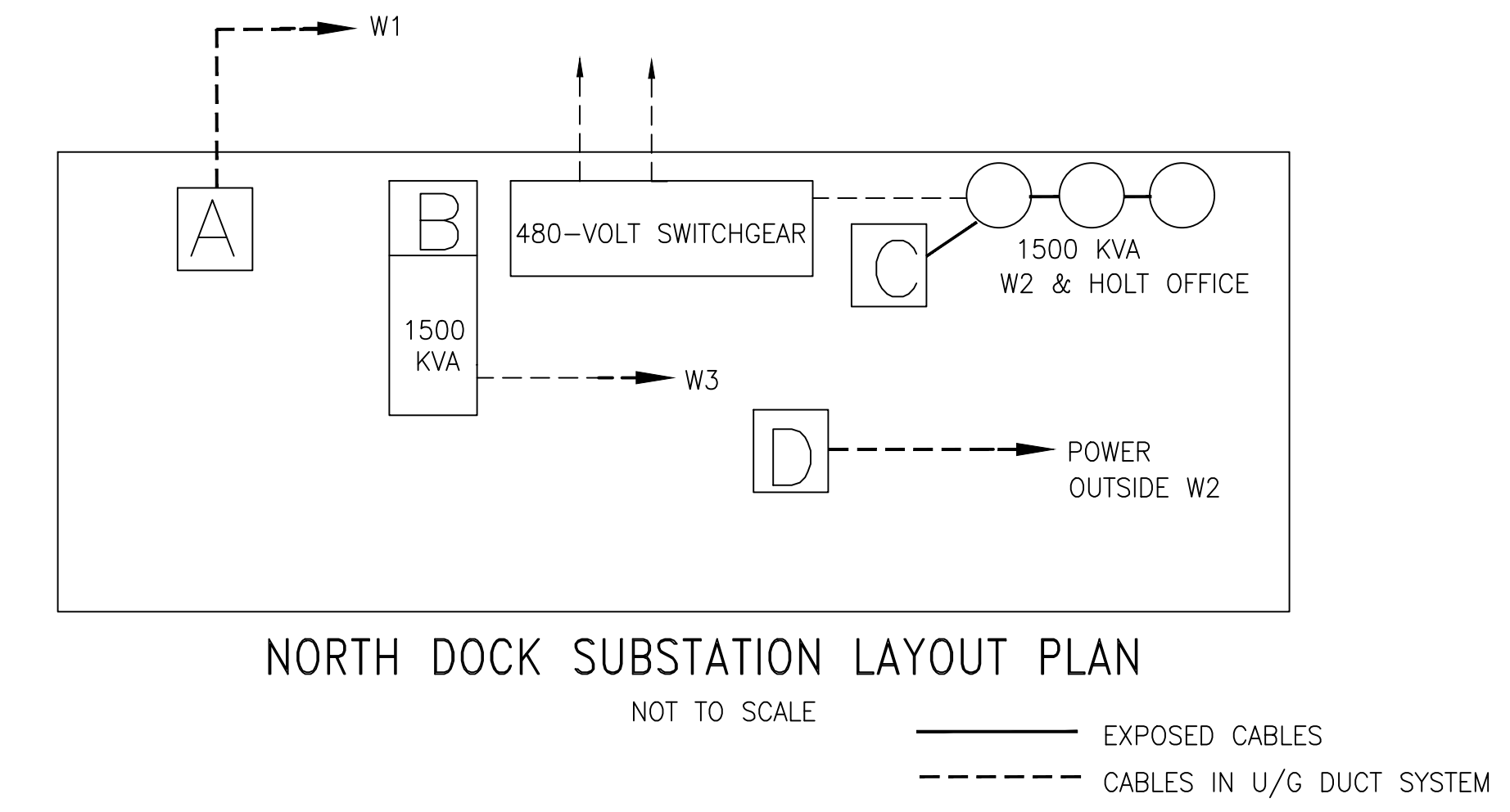
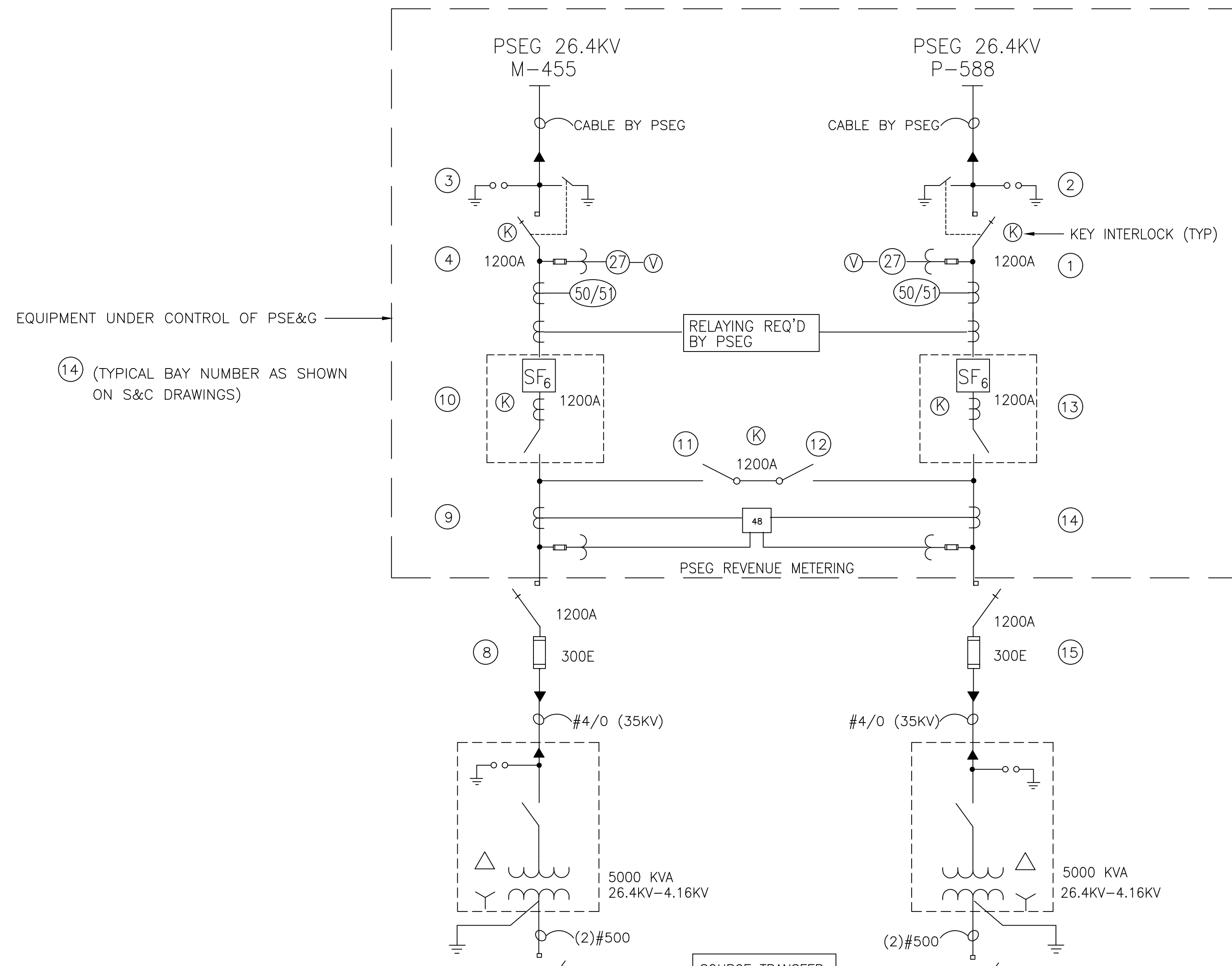
NOTICE

This Addendum is considered part of this Request for Proposals and must be acknowledged with your submission.

ADDITIONAL SUPPLEMENTAL DOCUMENTS

Please see the following attached documents:

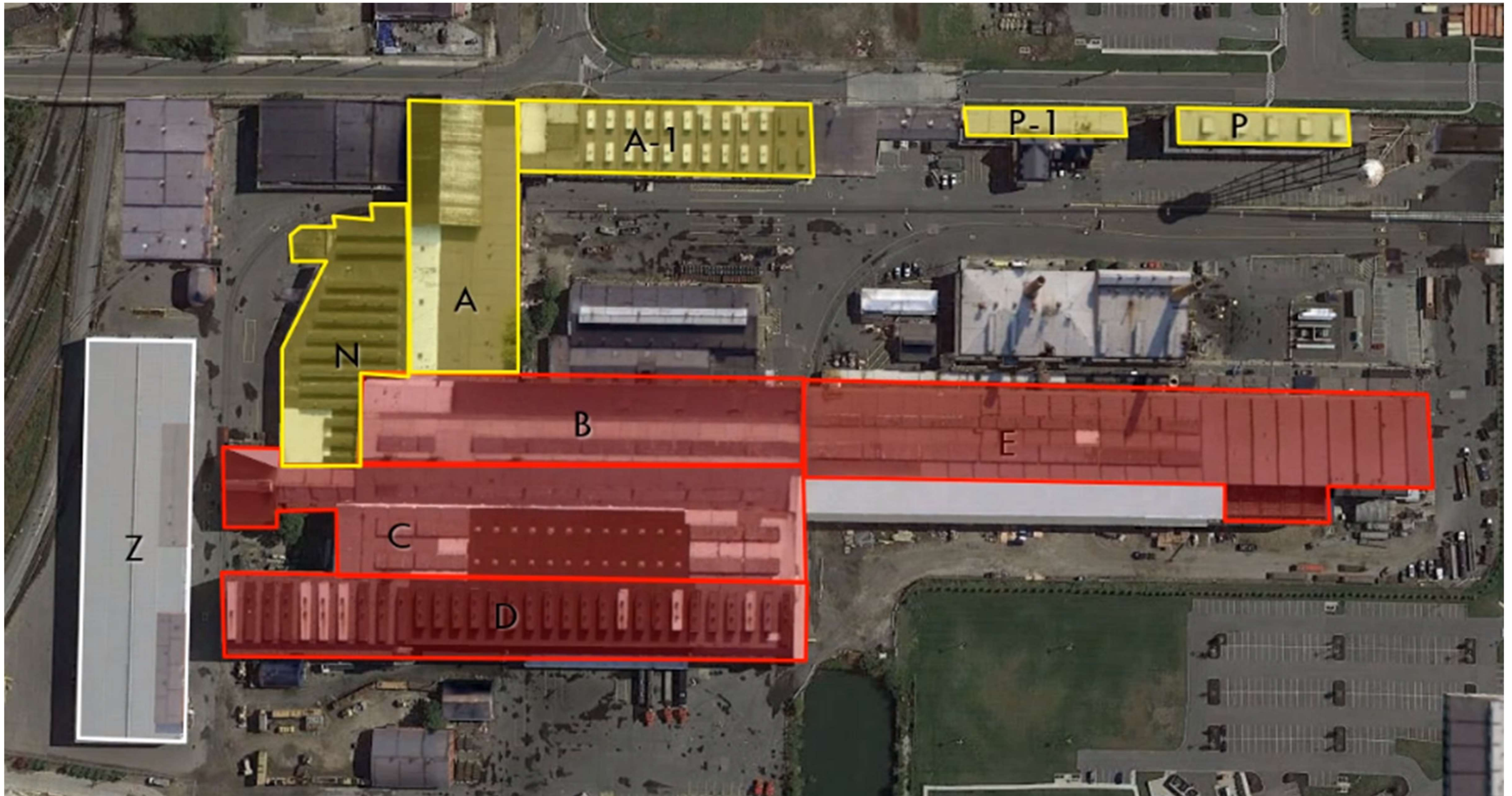
- A. Broadway Terminal Overall One Line Diagram June 2023
- B. Buildings Roof Map
- C. Drone Flight on You Tube



- REV 6/15/2023 MAIN SUB FORKLIFT CHARGERS
- REV 4/27/2023 UPDATED LABELING
- REV 4/11/05 UPDATED FOR NEW PUMP STATION
- REV 4/21/06 FOR JOSEPH OAT CO. EXPANSION
- REV 4/2/07 FOR CAMDEN YARDS NEW SHEAR LINE
- REV 9/23/09 FOR SUB. 'D' XFMR REPLACEMENT
- REV 12/27/16 FOR HOLT MODIFICATIONS
- REV 3/29/17 FOR HOLT MODIFICATIONS
- REV 1/20/21 CLARIFICATIONS IN NORTH DOCK SUB

SJPC BROADWAY TERMINAL
OVERALL ONE-LINE DIAGRAM

AS OF 1/20/21 JOHN C. GABRIEL, PE



Broadway Marine Terminal

Buildings Roof Map

**South Jersey Port Corporation
Solar Energy Program
Broadway Marine Terminal
Camden, NJ**

Drone flight

Remington & Vernick Engineers Drone Flight on You Tube

[Remington & Vernick Engineers Drone Flight - South Jersey Port Corporation - YouTube](https://www.youtube.com/watch?v=z4Alg308TJw)

<https://www.youtube.com/watch?v=z4Alg308TJw>